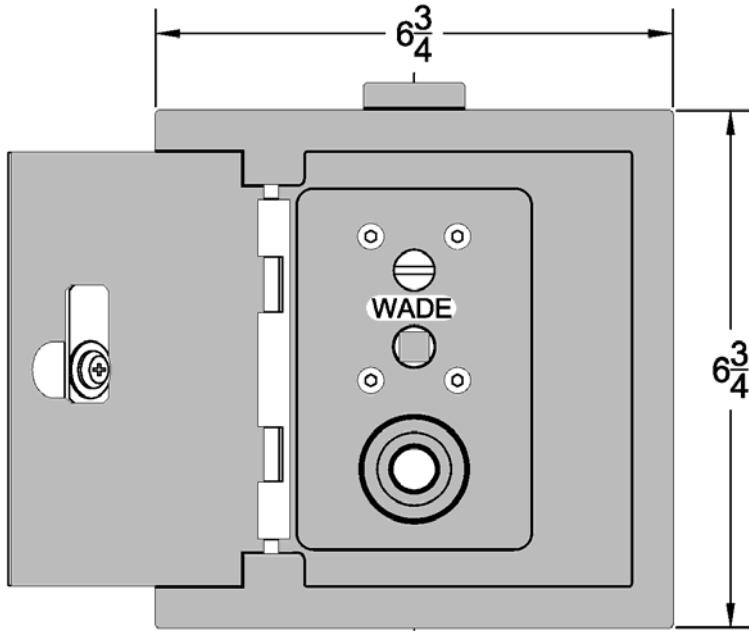


### 8709 Encased Mild Temperature, Narrow Wall Hydrant

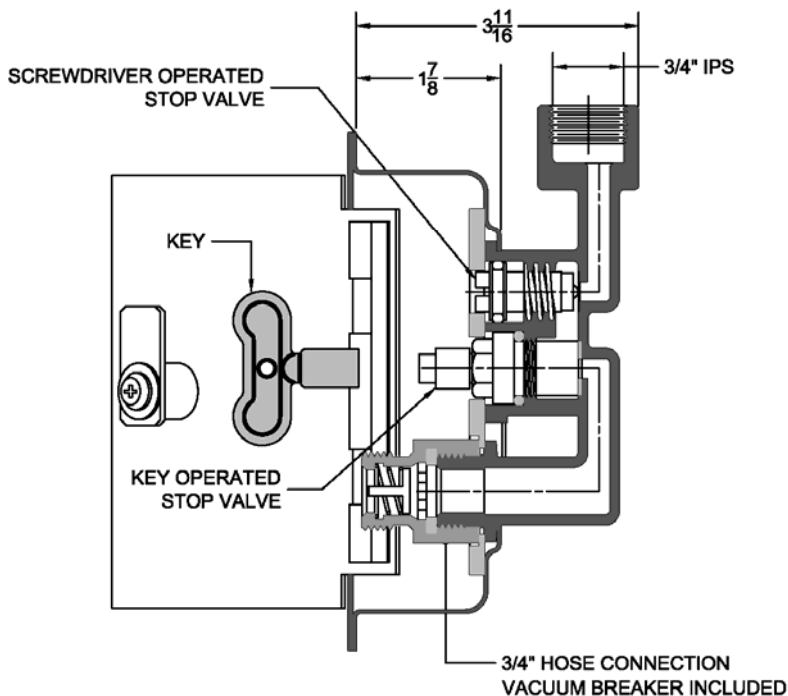
Project	Engineer	Mechanical
---------	----------	------------



S/S BOX W/ HINGED LID  
"WATER" STAMPED ON LID



8709-85



Maximum Working Pressure: 125 PSI

<b>Wall Thickness</b>	<b>-85</b> Satin Finish Stainless Steel
Close Coupled	

Suffix Options		
Suffix	Description	
-RK	Repair Kit	
-89	Vacuum Breaker	
-92	Key Operated Cylinder Lock	
-258	3/4" Solder inlet Elbow	

\*Dimensions vary from illustration

**Regularly Furnished:** Mild Temperature, narrow wall hydrant with 1/4 turn cartridge, bronze casing, 3/4" hose connection, box with hinged cover, & anti-siphon backflow preventer.