

**SPECIFICATION:**

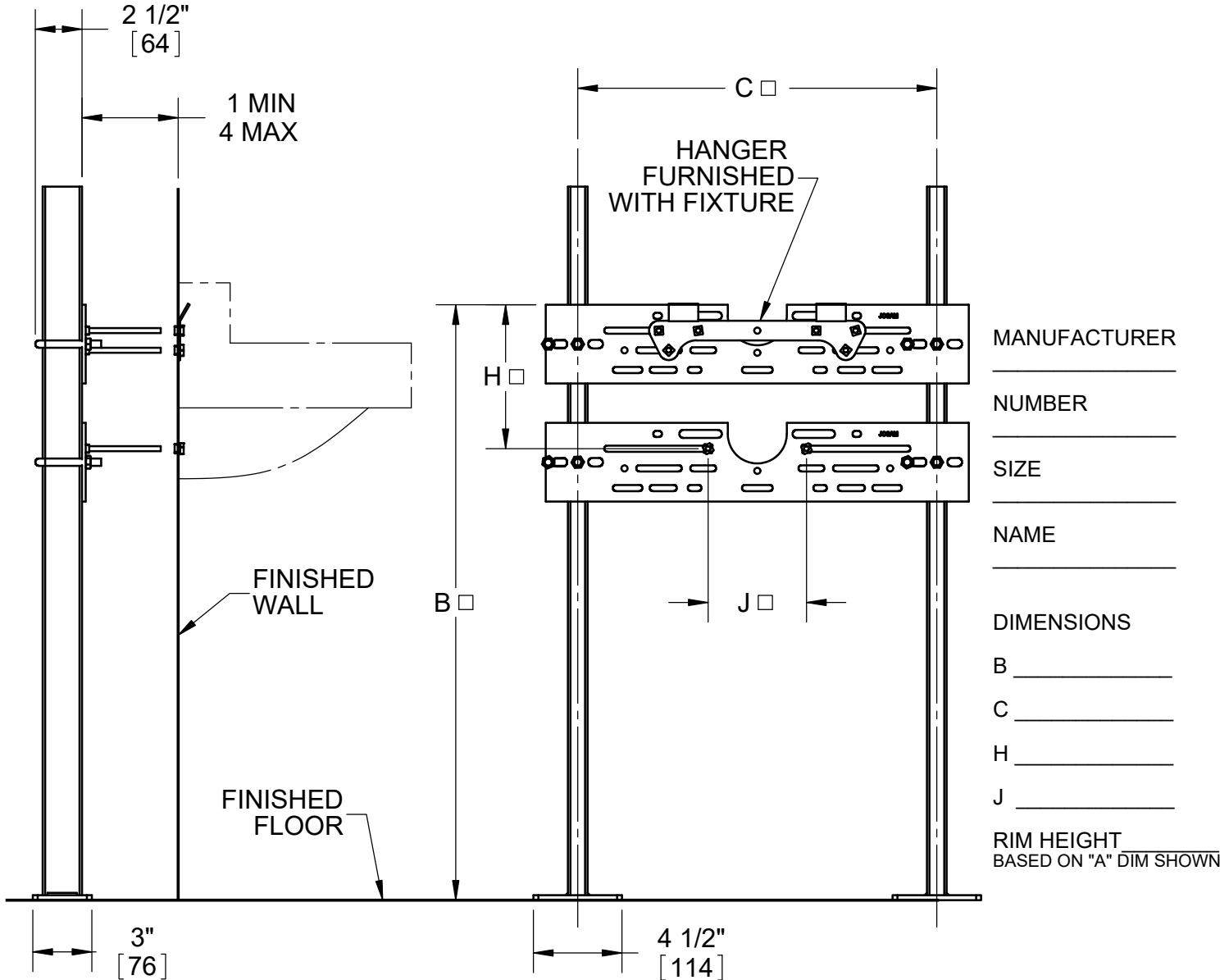
JOSAM 17560 SERIES FLOOR-MOUNTED, SINGLE LAVATORY CARRIER WITH HANGER & BEARING PLATE, ADJUSTABLE SUPPORTING RODS, STRUCTURAL UPRIGHTS, WELDED FEET AND CHROME PLATED TRIM.

**LAVATORY CARRIER  
FLOOR-MOUNT BEARING PLATE**

SERIES **17560**

REUSABLE ALIGNMENT TOOL AVAILABLE

□ VARIABLE - DEPENDS ON FIXTURE EXCEPT WHEN STANDARD PLATE IS FURNISHED C = 18-1/4"



MANUFACTURER \_\_\_\_\_

NUMBER \_\_\_\_\_

SIZE \_\_\_\_\_

NAME \_\_\_\_\_

DIMENSIONS

B \_\_\_\_\_

C \_\_\_\_\_

H \_\_\_\_\_

J \_\_\_\_\_

RIM HEIGHT  
BASED ON "A" DIM SHOWN

RECOMMEND ALL FEET BE SECURED TO FLOOR WITH 1/2" BOLTS AND ANCHORS BY OTHERS.

-BB	BACK-TO-BACK CARRIER△
-UR	URINAL CARRIER△
-WC	WATER COOLER CARRIER△

-WCBL	WATER COOLER BI-LEVEL CARRIER*
-10	STUDS FOR WALLS OVER 4" (SPECIFY WALL THICKNESS)
-60	VALVE PLATE FOR ATTACHING TO UPRIGHT

△ SEPARATE SUBMITTAL FOR THIS OPTION AVAILABLE

DATE OF LAST CHANGE: 06/01/18

DIMENSIONS ARE SUBJECT TO MANUFACTURERS TOLERANCES AND CHANGE WITHOUT NOTICE. WE CAN ASSUME NO RESPONSIBILITY FOR USE OF SUPERSEDED OR VOID DATA.



MICHIGAN CITY, INDIANA

NOTES

WARNING: Cancer and Reproductive Harm - www.P65Warnings.ca.gov