



HYDRANTS

Post Hydrant

MODEL M-275-RV

3/4" FREEZE RESISTANT, SELF-CLOSING STOCK CAR HYDRANT

STANDARD FEATURES

Model M-275-RV delivers year-round service outside or in unheated buildings. To provide freeze resistant functionality, the control valve is located below the frost line. Pulling down on the lever raises the internal supply-line assembly to the open position, and the self-closing spring lowers the internal supply-line assembly to the closed position. Constructed of heavy lead-free brass, premium-quality gray iron and steel, the M-275-RV is designed for trouble-free reliability and easy maintenance, and is the hydrant of choice for RV washdown areas and elevated railroad platforms.

SUGGESTED SPECIFICATIONS

Hydrant shall be Murdock-Super Secur mode M-275-RV. Unit shall be capable of year-round use in freezing weather.

Unit shall extend below grade level so that centerline of supply inlet is positioned at or below frost line. Inlet shall have 3/4" NPT male connection.

Water shall be gravity-evacuated from inner supply column when valve is shut off.

Valve shall be lever operated. Lever shall be fabricated of one-piece iron casting finished with a heavy grade of oil-based green enamel. Stock, top, and base shall be fabricated of heavy, one-piece iron castings finished with a heavy grade of oil-based green enamel.

Inner supply assembly shall incorporate solid-brass castings. All solid brass castings shall conform to ASTM standards B61 and B62. Lead-free castings are used in all waterways.

Outer casing shall be black iron pipe, finished with a heavy grade of oil-based green enamel.

Hydrant shall consist of internal supply line and a surrounding outer casing pipe for protection of waterway.

Nozzle shall be solid brass casting, threaded for 3/4" NPS hose connection.

Self-coiling hose is provided with the hydrant.



Standard Model: M-275-RV

DEPTH OF BURY (additional costs may be incurred)

- 2 ft. (61 cm)
- 3 ft. (91.4 cm)
- 4 ft. (121.9 cm)
- 5 ft. (152.4 cm)
- 6 ft. (182.9 cm)
- Other _____

OPTIONS (additional costs may be incurred)

- BFH Double ball check valve and vacuum breaker*
- VB Vacuum breaker
- R01 Shut off valve with plate*
- Plain end spout
- Sewer drain connection

* See separate option sheets



Member of U.S. Green Building Council



Recyclable Product

WARNING: Cancer and Reproductive Harm - www.P65Warnings.ca.gov

MURDOCK MFG. • 15125 Proctor Avenue • City of Industry, CA 91746 USA
Phone 800-453-7465 or 626-333-2543 • Fax 626-855-4860 • www.murdockmfg.com

Member of MORRIS GROUP INTERNATIONAL

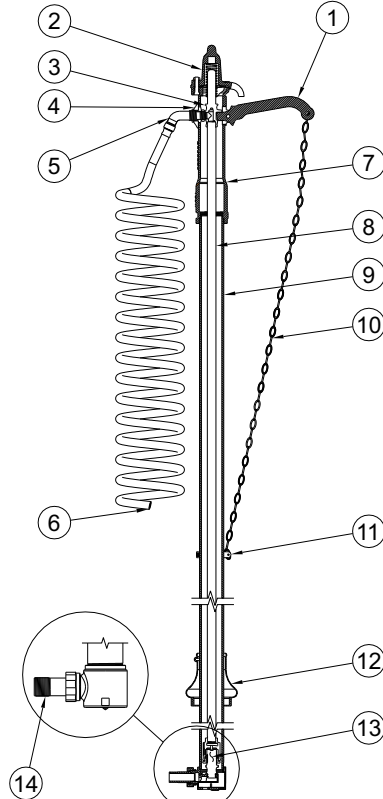
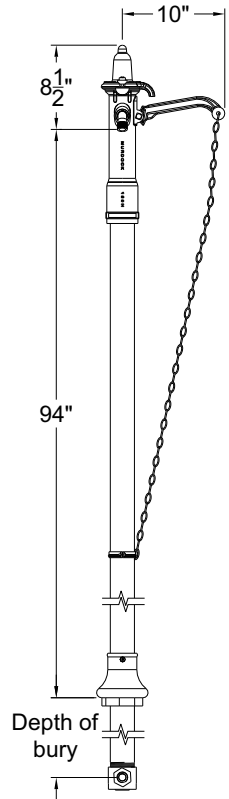


HYDRANTS

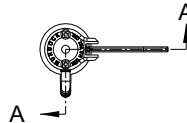
Post Hydrant

MODEL M-275-RV

3/4" FREEZE RESISTANT, SELF-CLOSING STOCK CAR HYDRANT



SECTION A-A



- | | | | |
|-------------------|---------------------------------|----------------------|----------------------------------|
| ① Lever | ⑤ 3/4" Hose thread brass nozzle | ⑧ Inner supply pipe | ⑫ Base |
| ② Top | ⑥ 25' Coiled hose | ⑨ Outer casting | ⑬ Valve |
| ③ Stirrup and tee | ⑦ Stock | ⑩ 41" Long chain | ⑭ 3/4" male NPT brass connection |
| ④ Slide | | ⑪ Chain holder clamp | |

Murdock Mfg.™ warrants that its products are free from defects in material or workmanship under normal use and service for a period of one year from date of shipment. Murdock's liability under this warranty shall be discharged solely by replacement or repair of defective material, provided Murdock™ is notified in writing within one year from date of shipment, F.O.B. Industry, California.

| | | | |
|--|--|----------------|--|
| SELECTION SUMMARY & APPROVAL FOR MANUFACTURING | Model Number & Options _____ | Quantity _____ | All dimensions are subject to manufactures tolerance of plus or minus 1/2" nominal and subject to change without notice. Murdock assumes no responsibility for use of void or superseded data. Dimensions may change with the addition of optional accessories. Murdock Mfg.™, Member of Morris Group International™. Please visit www.murdockmfg.com for most current specifications. |
| | Company _____ | | |
| | Contact _____ | Title _____ | |
| | Signature (Approval for Manufacturing) _____ | Date _____ | |

MURDOCK MFG. • 15125 Proctor Avenue • City of Industry, CA 91746 USA
 Phone 800-453-7465 or 626-333-2543 • Fax 626-855-4860 • www.murdockmfg.com

Member of MORRIS GROUP INTERNATIONAL