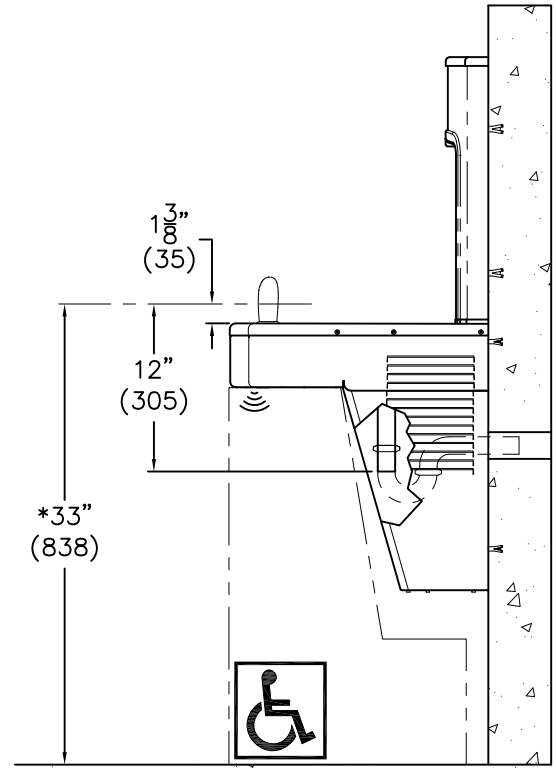
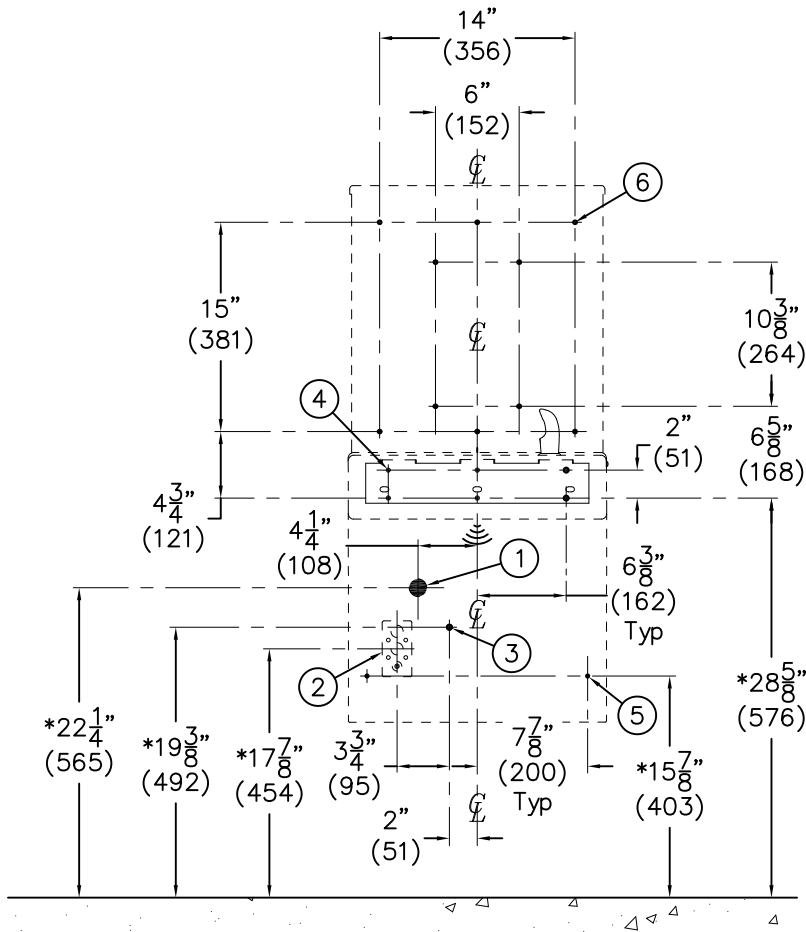




# INSTALLATION INSTRUCTIONS

# WATER COOLER/BOTTLE FILLER

| POWER REQUIREMENTS: |       |        |
|---------------------|-------|--------|
| CHILLER             | 4.4A  | 120VAC |
| SENSOR              | 450MA | 120VAC |



### GENERAL NOTES:

1. ALL DIMENSIONS ARE IN INCHES [MM]
2. ALLOW 4 INCHES [102 MM] MINIMUM CLEARANCE PER SIDE FOR VENTILATION
- \*3. DIMENSIONS SHOWN ARE FOR ADA ADULT HEIGHT. ADJUST VERTICAL DIMENSIONS AS NECESSARY TO COMPLY WITH FEDERAL, STATE, & LOCAL CODES
4. STOP VALVE, P-TRAP, & ELECTRICAL OUTLET NOT SUPPLIED
5. IMPORTANT: COOLERS MUST BE ATTACHED TO WALL WITH APPROPRIATE ANCHOR SCREWS

### ROUGHS:

A- ROUGH-IN FOR:

① WASTE CONNECTION FOR FIXTURE 1-1/4" TAILPIECE PROVIDED. P-TRAP PROVIDED BY INSTALLER.

B- ② PROVIDE 120VAC ELECTRICAL SERVICE FOR PROVIDED TRANSFORMERS.

C- ③ SUPPLY CONNECTION FOR FIXTURE 3/8" OD COPPER INLET. STOP PROVIDED BY THE INSTALLER.

D- ④  $\phi$ 3/8" HANGER BRACKET PUNCHING, (6) PLACES FOR ANCHORING HARDWARE BY OTHERS

E- ⑤  $\phi$ 1/4" LOWER FRAME MOUNTING PUNCHING, (2) PLACES FOR ANCHORING HARDWARE BY OTHERS

F- ⑥  $\phi$ 0.281" REAR SPLASH PUNCHING, (9) PLACES FOR ANCHORING HARDWARE BY OTHERS. NOTE: FOR RETROFIT INSTALLATION, TOP AND BOTTOM MOUNTING LOCATIONS MAY MATCH EXISTING FIXTURE. FOR NEW INSTALLS, SELECT (4) OR MORE MOUNTING POINTS TO BEST SUIT SITE CONDITIONS.

G- PROVIDE APPROPRIATE WALL BACKING AT ④, ⑤ & ⑥ LOCATIONS INDICATED.

|  |   |  |                                       |
|--|---|--|---------------------------------------|
| MURDOCK-SUPER SECUR<br>P.O. Box 3527 Industry, CA 91744<br>15125 Proctor Ave Industry, CA 91746<br>Phone: (800) 591-9880<br>www.murdock-supersecur.com | TITLE<br><b>A171.8-UG-SOC-BF SERIES ROUGH-INS</b>             |  |                                       |
|  | MANUFACTURE DATE<br><b>DECEMBER 2020</b><br><b>TO PRESENT</b> | DATE ISSUED<br><b>12/22/20</b><br>DATE REVISED | DRAWING NUMBER<br><b>9938-502-001</b> |