



OUTDOOR SHOWERS

Shower Series

MODEL M-PCMST84 MISTING COLUMN

STANDARD FEATURES

- Pushbutton requiring less than 5 pounds for activation
- Adjustable timing, from 5 to 60 seconds
- Misting Column provides 0.18 gpm
- Vandal resistant fasteners
- Shut off valve for easy servicing
- Heavy duty, 14 gage, 304 stainless steel construction with corrosion and scratch resistant satin finish

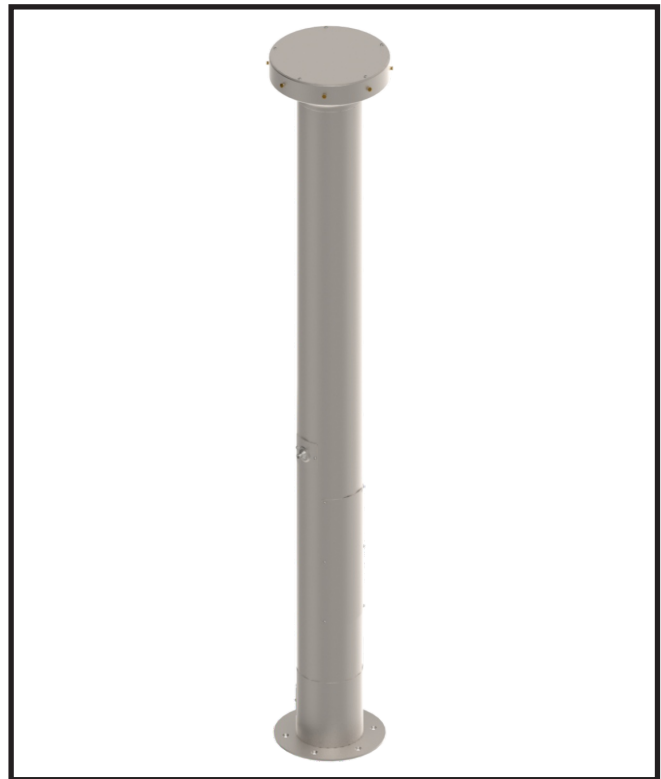
SUGGESTED SPECIFICATIONS

Column style mister shall be Murdock model M-PCMST84, eight nozzle mister. Unit is to be pre-piped and hydrostatically tested.

Valve shall have internally mounted metering valve, pushbutton operated and requiring less than 5 pounds of force to activate. Timing shall be adjusted from 5 to 60 seconds.

Misting column nozzles shall be brass and fixture provides 0.18 gpm.

Unit shall be constructed of heavy duty 14 gage type 304 stainless steel polished to a satin finish with vandal resistant fasteners and shall include a 1/4" thick stainless steel bottom plate, providing secure mounting for shower.



Standard Model: M-PCMST84

MODEL: (Must Specify)

- M-PCMST84 Satin Stainless Finish (Shown)
 - M-PCMST85 Green Powder-Coated
 - M-PCMST86 Red Powder-Coated
 - M-PCMST87 Blue Powder-Coated
- Custom color finishes available upon request*

OPTIONS

(additional costs may be incurred)

- FRU1 Underground freeze-resistant valve for one pushbutton ¹
- HB1 Hose bibb, compression with hose thread outlet outlet VB
- HB2 Hose bibb, loose key with hose outlet thread VB
- HB3 Hose bibb, loose key, vandal resistant with hose outlet thread VB
- IAP In-ground anchor plate (replaces standard anchor plate)¹
- LOGO Customer specified logo ¹

Options Notes:

¹ See separate option sheet.



Member of
U.S. Green
Building
Council



Recyclable
Product

WARNING: Cancer and Reproductive Harm - www.P65Warnings.ca.gov

Please visit www.murdockmfg.com
for most current specifications.

MURDOCK MFG. • 15125 Proctor Avenue • City of Industry, CA 91746 USA
Phone 800-453-7465 or 626-333-2543 • Fax 626-855-4860 • www.murdockmfg.com

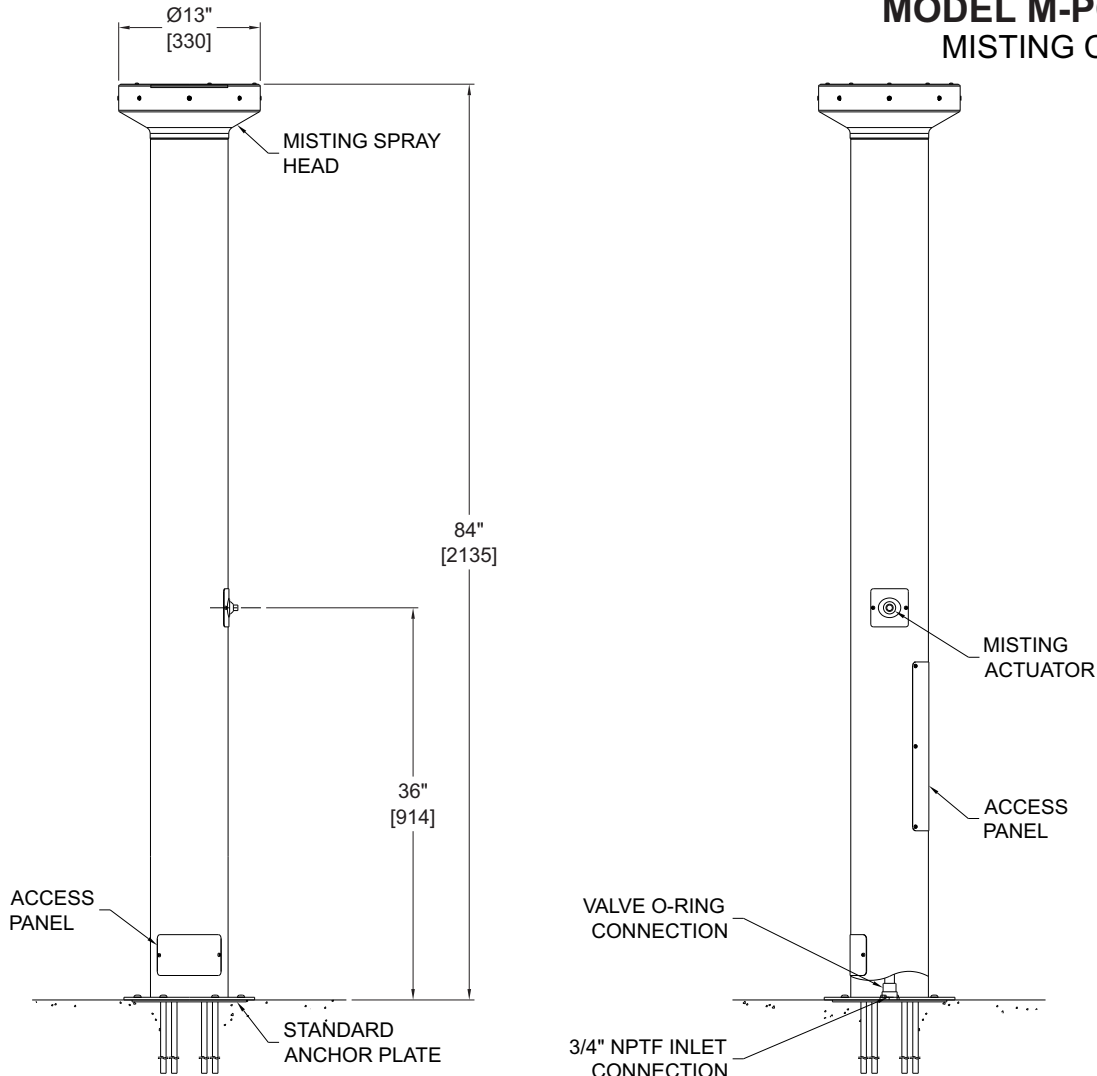
Member of
MORRIS GROUP
INTERNATIONAL



OUTDOOR SHOWERS

All dimensions are subject to manufactures tolerance of plus or minus 1/8" nominal and subject to change without notice. Murdock Mfg. assumes no responsibility for use of void or superseded data. Dimensions may change with the addition of optional accessories. Murdock Mfg.™, Member of Morris Group International™. Please visit www.Murdockmfg.com for most current specifications.

Shower Series MODEL M-PCMST8 MISTING COLUMN



GENERAL NOTES:
1. ALL DIMENSIONS ARE IN INCHES [MM].

Murdock Mfg.™ warrants that its products are free from defects in material or workmanship under normal use and service for a period of one year from date of shipment. Murdock's liability under this warranty shall be discharged solely by replacement or repair of defective material, provided Murdock™ is notified in writing within one year from date of shipment, F.O.B. Industry, California.

SELECTION SUMMARY & APPROVAL FOR MANUFACTURING	Model Number & Options _____	Quantity _____	All dimensions are subject to manufactures tolerance of plus or minus 1/8" nominal and subject to change without notice. Murdock assumes no responsibility for use of void or superseded data. Dimensions may change with the addition of optional accessories. Murdock Mfg.™, Member of Morris Group International™. Please visit www.murdockmfg.com for most current specifications.
	Company _____		
	Contact _____	Title _____	
	Signature (Approval for Manufacturing) _____	Date _____	

MURDOCK MFG. • 15125 Proctor Avenue • City of Industry, CA 91746 USA
Phone 800-453-7465 or 626-333-2543 • Fax 626-855-4860 • www.murdockmfg.com

