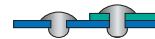
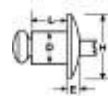


Copper Brass and Copper Steel Rivets

#110 Copper Rivet Brass or Copper Plated Steel Mandrel IFI Grade 20

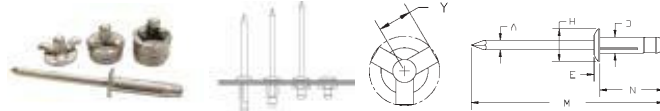


Typical Ultimate Strength (Lbs.) (newtons)
Shear Tensile

AFS Part No.	D Rivet Dia. Nom. Inch	Drill No. & Hole Size	H Head Dia. Nom. Inch	E Head Height Max. Inch	L Rivet Length Max. Inch	Grip Range Inch	Typical Ultimate Strength (Lbs.) (newtons)
							Shear Tensile
CB4-2B; CB4-2C	1/8"(.125)	#30(.129-.133)	.125	.040	.275 7.0	.063-.125 1.7-3.2	215 300
CB4-4B; CB4-4C	3/2	3.3(3.28-3.38)	6.35	1.02	.400 10.2	.188-.250 4.9-6.4	950 1330

2B - Copper Brass; 2C - Copper Steel

Tri-Bulb Rivets



Plain Rivet	Black Rivet	D	A	E	H	M	Grip Range	N	Y	Shear		Tensile	
										lbs.	newtons	lbs.	newtons
A0516ATB	A0516ATB-GBK-1	0.157	0.091	0.055	0.315	1.890	.039 - .118	0.630	0.236	134	600	224	1000
A0523ATB	A0523ATB-GBK-1	0.157	0.091	0.055	0.315	2.087	.039 - .276	0.835	0.335	134	600	224	1000
A0619ATB	A0619ATB-GBK-1	0.188	0.115	0.071	0.386	2.008	.039 - .157	0.720	0.276	202	900	269	1200
A0622ATB	A0622ATB-GBK-1	0.188	0.115	0.071	0.386	2.205	.039 - .248	0.807	0.335	202	900	269	1200
A0625ATB	A0625ATB-GBK-1	0.188	0.115	0.071	0.386	2.205	.039 - .354	0.925	0.374	202	900	269	1200
A0630ATB	A0630ATB-GBK-1	0.188	0.115	0.071	0.386	2.362	.157 - .472	1.063	0.433	202	900	269	1200
AL0625ATB	AL0625ATB-GBK-1	0.188	0.115	0.079	0.551	2.205	.039 - .354	0.925	0.374	202	900	269	1200

White available as special order item.