

A152FG Series

MODEL A152400S-FG

BARRIER FREE, BI-LEVEL, WALL MOUNTED
14 GAUGE STAINLESS STEEL DRINKING
FOUNTAIN WITH 32" TRIM PANEL

STANDARD FEATURES

- Child Or Adult Ada Compliant (When Properly Installed)
- 14 Gauge 304 Stainless Steel
- Polished Stainless Steel, Anti-rotation, Non-squirt Bubbler
- 100-mesh Inlet Strainer
- Vandal-resistant Screws
- P-trap
- Mounting Plate With Hardware
- 32 Inch Trim Panel



Model A152400S-FG Shown

SUGGESTED SPECIFICATIONS

Model A152400S-FG is a wall mounted, vandal resistant bi-level drinking fountain made from **14 gauge, 304 stainless steel** with a brushed finish. Unit shall be activated by self-closing, front pushbuttons, by using less than 5 pounds of force, which activates internally mounted valves with adjustable stream regulators controlling the water flow. Bubblers shall be polished chrome plated brass with non-squirt features and operate on a water pressure range of 20-105 PSIG. Unit shall have a uniquely designed, contoured bowls with P-traps integral to the unit. Unit is certified to ANSI A117.1, Public Law 111-380 (NO-LEAD), CHSC 116875 and NSF/ANSI 61, Section 9. Fixture meets ADA, ADA Standing Person, and ADA Child requirements when mounted appropriately.

MODEL:

(Must Specify)

- A152400S-FG Satin Stainless Finish

OPTIONS

(additional costs may be incurred)

- AP3 Access panel for a dual fountain
(Must select -MF8)
- W32-CSC Concealed support carrier
- HP High polished stainless steel
- MF8 Mounting frame for a dual fountain
- RBL Reverse bi-level
- SK2-18 Skirt kit, stainless steel, for upper unit
- WF1 1500 gallon capacity, NSF 42+53,
1 micron lead reduction filter (**See Note ***)
- WF3 3000 gallon capacity, NSF 42+53,
1 micron lead reduction filter (**See Note ***)
- A9100080-A 8 GPH Remote Water Chiller
(Recommended to be with 10 Feet of
Fixture)

*** NOTE: For Optional -WF1 And -WF3:**
Optional -AP3 Is Recommended Or Filter Shall Be
Remotely Locate.

Complies
with the
following
standards:



Federal
Public Law
111-380
(No Lead)



Member of
U.S. Green
Building
Council



Recyclable
Product

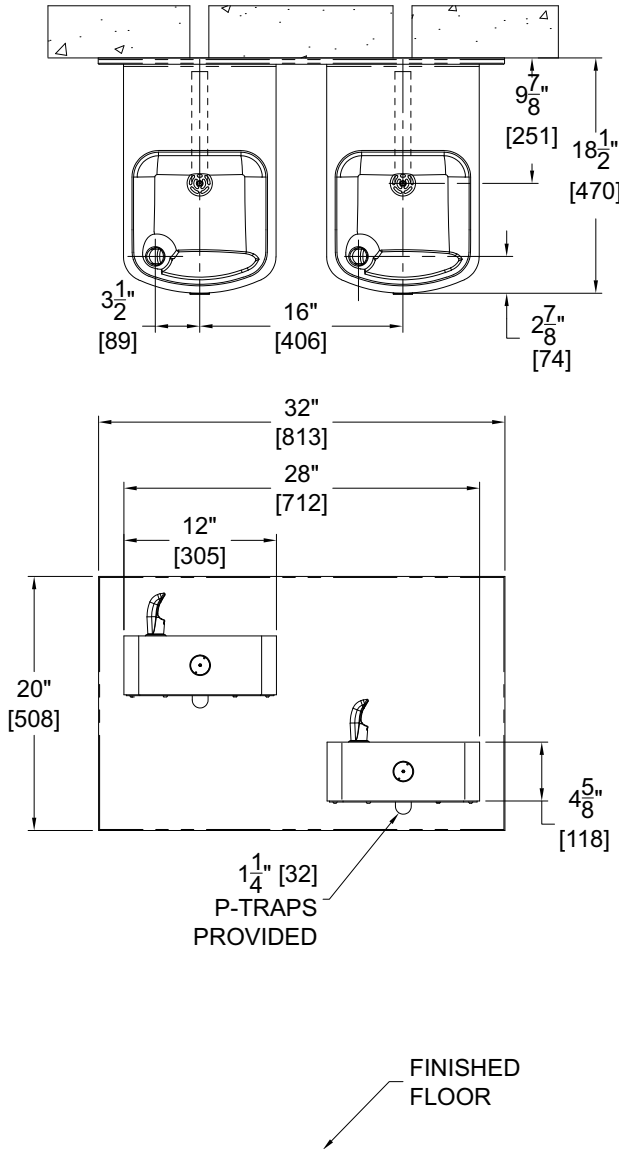


Water
Conserving
Product

WARNING: Cancer and Reproductive Harm - www.P65Warnings.ca.gov

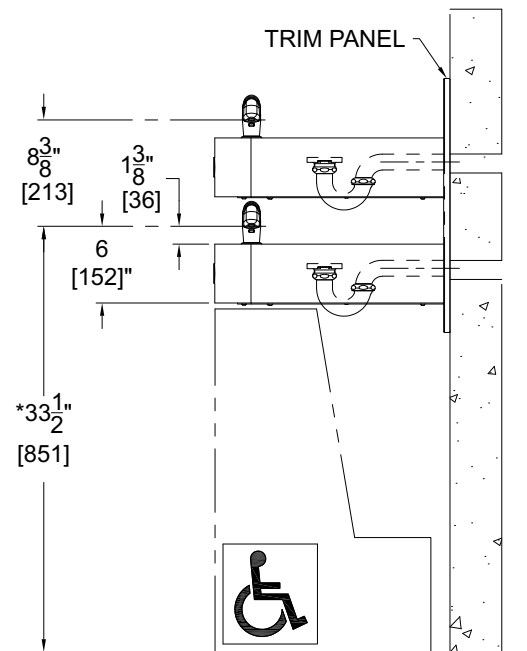
**A152FG Series
MODEL A152400S-FG**

**BARRIER FREE, BI-LEVEL, WALL MOUNTED
14 GAGE STAINLESS STEEL DRINKING
FOUNTAIN WITH 32" TRIM PANEL**



GENERAL NOTES:

1. ALL DIMENSIONS ARE IN INCHES [MM].
- *2. DIMENSIONS SHOWN ARE FOR RECOMMENDED ADULT HEIGHT, ADJUST VERTICAL DIMENSIONS AS NECESSARY TO COMPLY WITH FEDERAL STATE AND LOCAL CODES.
3. STOP VALVE NOT PROVIDED.



Murdock Mfg.™ warrants that its products are free from defects in material or workmanship under normal use and service for a period of one year from date of shipment. Murdock's liability under this warranty shall be discharged solely by replacement or repair of defective material, provided Murdock™ is notified in writing within one year from date of shipment, F.O.B. Industry, California.

SELECTION SUMMARY & APPROVAL FOR MANUFACTURING	Model Number & Options _____	Quantity _____	All dimensions are subject to manufactures tolerance of plus or minus 1/2" nominal and subject to change without notice. Murdock assumes no responsibility for use of void or superseded data. Dimensions may change with the addition of optional accessories. Murdock Mfg.™, Member of Morris Group International™. Please visit www.murdockmfg.com for most current specifications.
	Company _____		
	Contact _____	Title _____	
	Signature (Approval for Manufacturing) _____	Date _____	