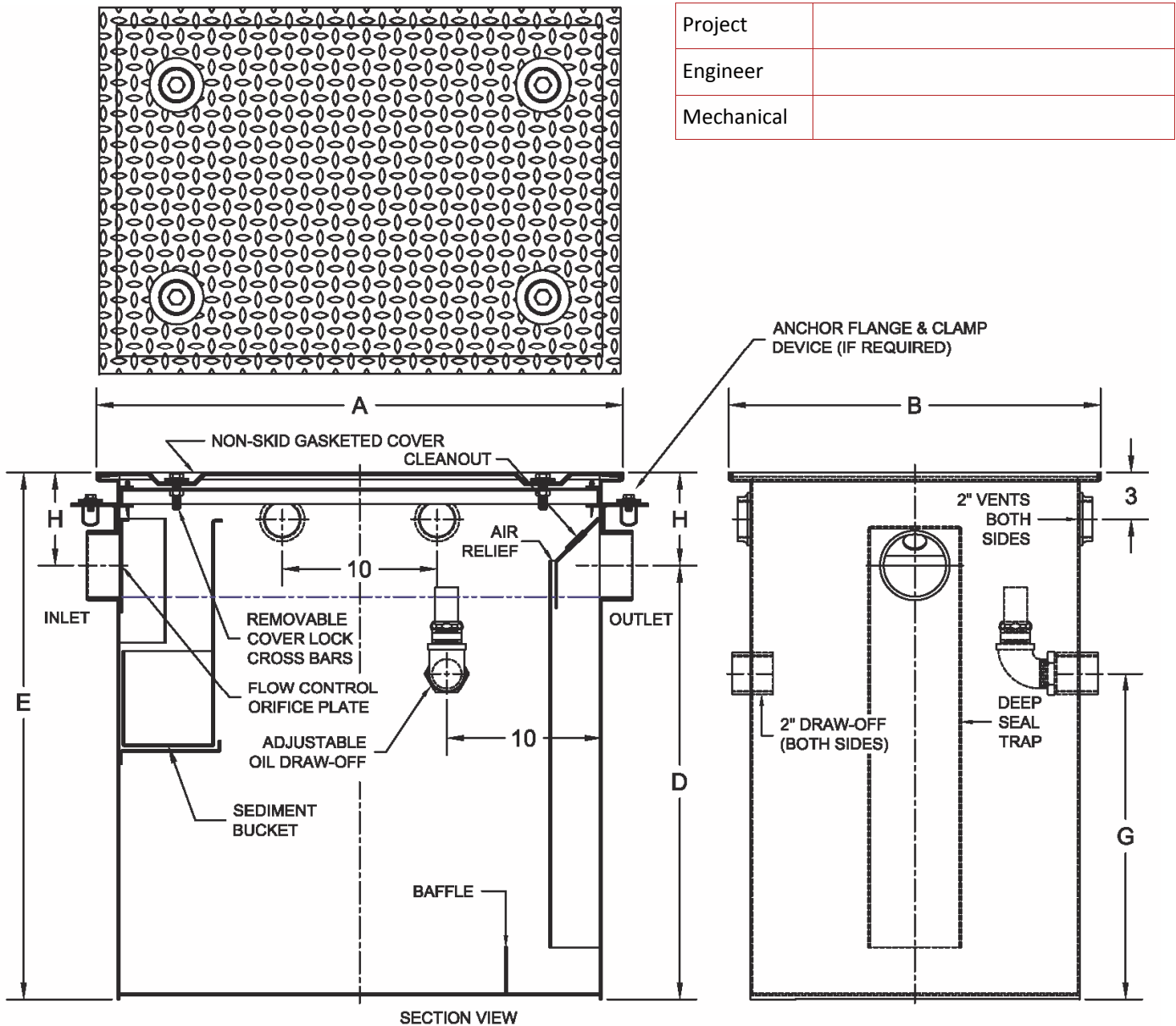


## 5400 Oil Interceptor

Regularly Furnished: Fabricated A.R.C. steel oil interceptor with removable baffles, & gasketed cover.



| • | Size GPM | Pipe Size | Capacity |       | Dimensions (Inches) |        |        |        |       | No. of Lids |
|---|----------|-----------|----------|-------|---------------------|--------|--------|--------|-------|-------------|
|   |          |           | Gallons  | Cu.Ft | A                   | B      | D      | E      | H     |             |
|   | 10       | 2         | 10       | 1.3   | 21                  | 15 1/2 | 9 1/2  | 13     | 3 1/2 | 1           |
|   | 15       | 2         | 14       | 1.9   | 34                  | 15 1/2 | 11 1/2 | 15     | 3 1/2 | 1           |
|   | 20       | 3         | 17       | 2.2   | 24                  | 15 1/2 | 14     | 17 1/2 | 3 1/2 | 1           |
|   | 25       | 3         | 56       | 7.5   | 28                  | 22     | 26     | 32     | 6     | 1           |
|   | 35       | 3         | 76       | 10.2  | 34                  | 24     | 26     | 32     | 6     | 1           |
|   | 50       | 3         | 82       | 11.0  | 34                  | 24     | 28     | 34     | 6     | 1           |

\*Dimensions vary from illustration

| Suffix Options    |   |   |
|-------------------|---|---|
| Suffix            | Description                                   | • |
| -18               | Heavy Duty Cover *                            |   |
| -24               | Anchor Flange*                                |   |
| -26               | Anchor Flange w/ Clamp Device *               |   |
| -FH               | Housing w/ Adjustable Cradle *                |   |
| -FHT              | Full Housing w/ Adjustable Housing *          |   |
| -T                | Cover Recessed for Tile (Specify Thickness) * |   |
| -XT               | Fixed Extension (Specify Height) *            |   |
| Outlet Variations |   |   |
| -NH               | No-Hub  |   |
| -IPS              | Female Threaded                               |   |