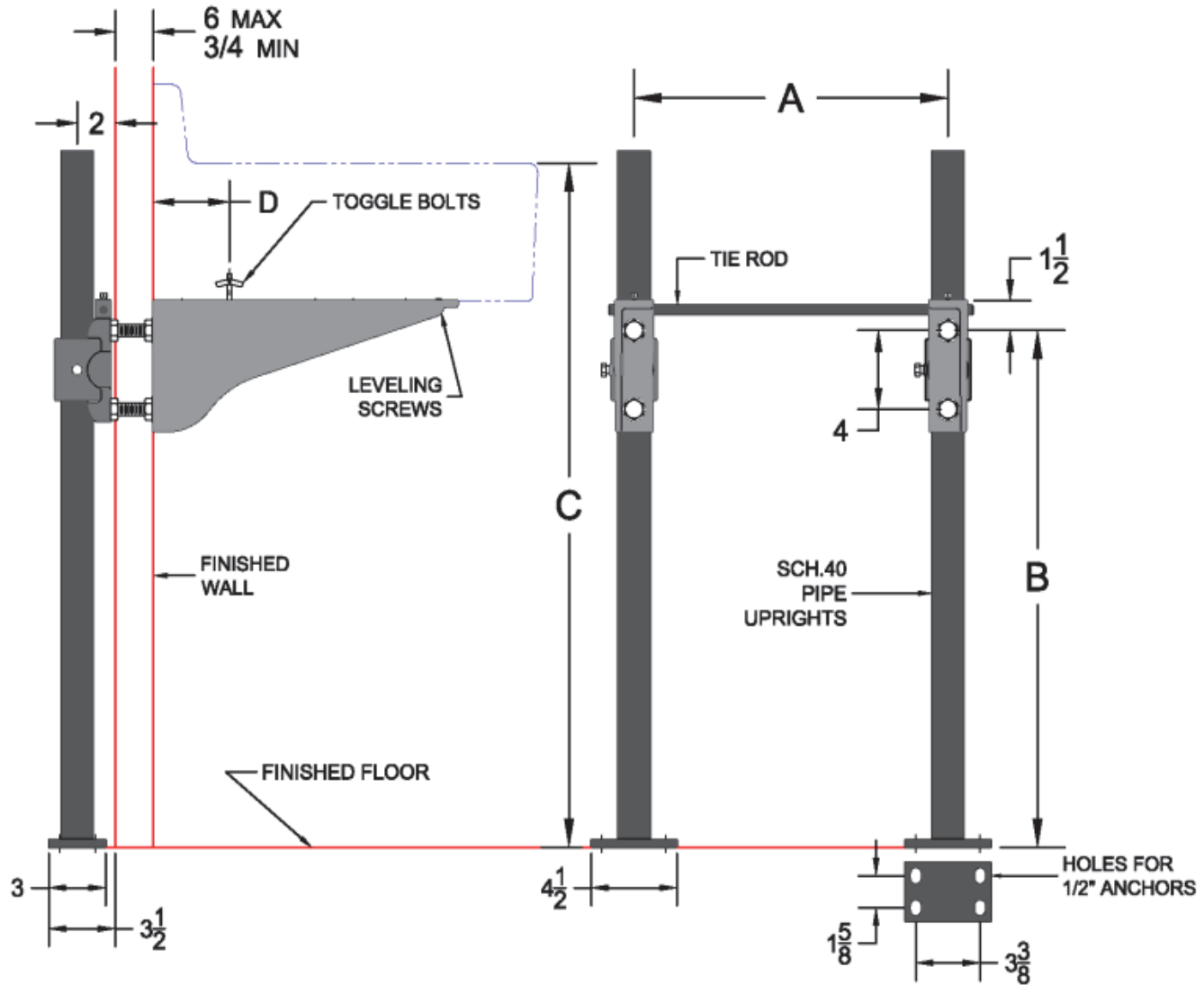


### 610 Sink Carrier (Exposed Arms)

Project	Engineer	Mechanical
---------	----------	------------

Conforms to ASME A112.6.1M Type I Sink Carrier—Max Load Test 150 Lbs.



Model	Configuration	
610	Single	•
613	Wash Station Deck (3 Supports)	

**Regularly Furnished:** Single sink carrier with round uprights, rectangular base feet, & A.R.C. cast iron exposed arms.

Suffix	Description	
-AM27	Valve Support Plate on Upright * (Specify Valve)	
-AM28	Valve Support Plate Between Arms * (Specify Valve)	
-M3	Vandal Proof Finish Hardware	
-M4	Longer Hardware for Thicker Walls (per inch)	
-M18	Extra Long Uprights*	
-M36	Rectangular Uprights	

\*Dimensions vary from illustration