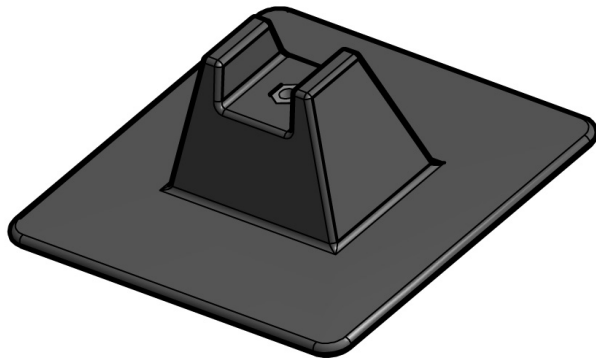


Specification and Data Sheet M8-UFS



**Pipe Support
Model No. M8-UFS**

BASE MATERIAL

MIRON TPC™ or Polycarbonate Plastic
(UV Resistant)

SIZE

The deck base is 8" x 8" with a height of 3".
Coupler housing accepts 3/8" – 16"
all-thread. Structural housing accepts
max 1-5/8" x 1-5/8" UNI STRUT®.

MAX PIPE CLEARANCE

M8-UFS elevates pipe above the roof
membrane from a low of 2" up to 12".

MAX LOAD WEIGHT

Maximum load weight may not exceed
93 lbs. per support.

SPACING

Manufacturer's recommended spacing should
not exceed 10 foot centers depending upon the
load. Do not exceed 93 lbs. load weight and
make certain each support is adjusted to even
the load with all other supports.

WARRANTY

1 year.

INSTALLATION PROCEDURES

1. All UNI-FLEX systems are shipped un-assembled (field assembly required).
2. Remove hardware from box and use all other necessary components to build a suitable support.
3. Clear all loose gravel and aggregate away from roof top support site.
4. Place UNI-FLEX base on a walk pad or slip pad for added protection.
5. Make sure to center each unit, and make necessary adjustments so that each unit carries an even load. Load not to exceed 93 lbs per unit.

This document, attachments, and all of the information therein are the property of MIRO Industries, Inc. The information contained is loaned, subject to return upon demand, and is not to be used directly or indirectly in any way detrimental to our interest. Further, the information contained therein shall not be used, in whole or in part, except when allowed by written authorization from MIRO Industries, Inc.

Copyright MIRO Industries, Inc. 2003-2012.

Model M8-UFS UNI-FLEX Series