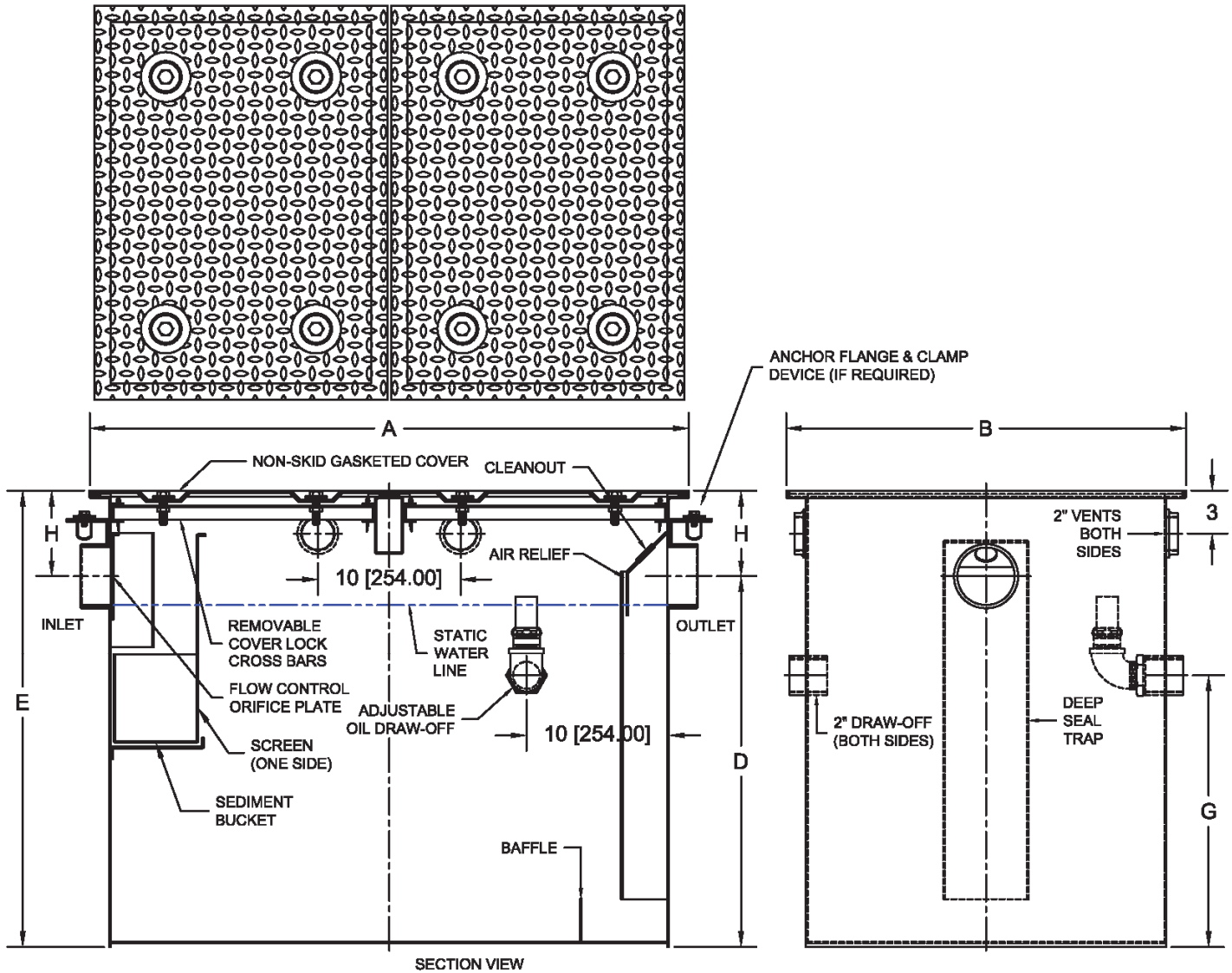


5401 Large Capacity Oil Interceptor

Regularly Furnished: Fabricated A.R.C. steel oil interceptor with removable baffles, & gasketed cover.

Project	Engineer	Mechanical
---------	----------	------------



•	Size GPM	Pipe Size	Capacity		Dimensions (Inches)					No. of Lids
			Gallons	Cu.Ft	A	B	D	E	H	
	75	4"	168	22.4	48	34	28	36	8	2
	100	4"	188	25.1	51	36	28	36	8	2
	125	4"	195	26.1	53	36	28	36	8	2
	150	4"	215	28.7	58	36	28	38	10	3
	200	4"	309	41.3	68	38	32	42	10	4
	250	4"	427	67.0	74	40	38	50	12	4
	300	4"	526	70.2	78	44	40	52	12	4
	350	6"	590	73.5	80	46	40	52	12	6
	400	6"	622	83.1	82	48	42	54	12	6
	450	6"	665	88.8	84	50	42	54	12	6
	500	6"	783	104.5	86	62	46	58	12	6

Suffix Options		
Suffix	Description	•
-18	Heavy Duty Cover *	
-24	Anchor Flange*	
-26	Anchor Flange w/ Clamp Device *	
-T	Cover Recessed for Tile (Specify Thickness) *	
-XT	Fixed Extension (Specify Height) *	
Outlet Variations		
-NH	No-Hub	
-IPS	Female Threaded	

*Dimensions vary from illustration