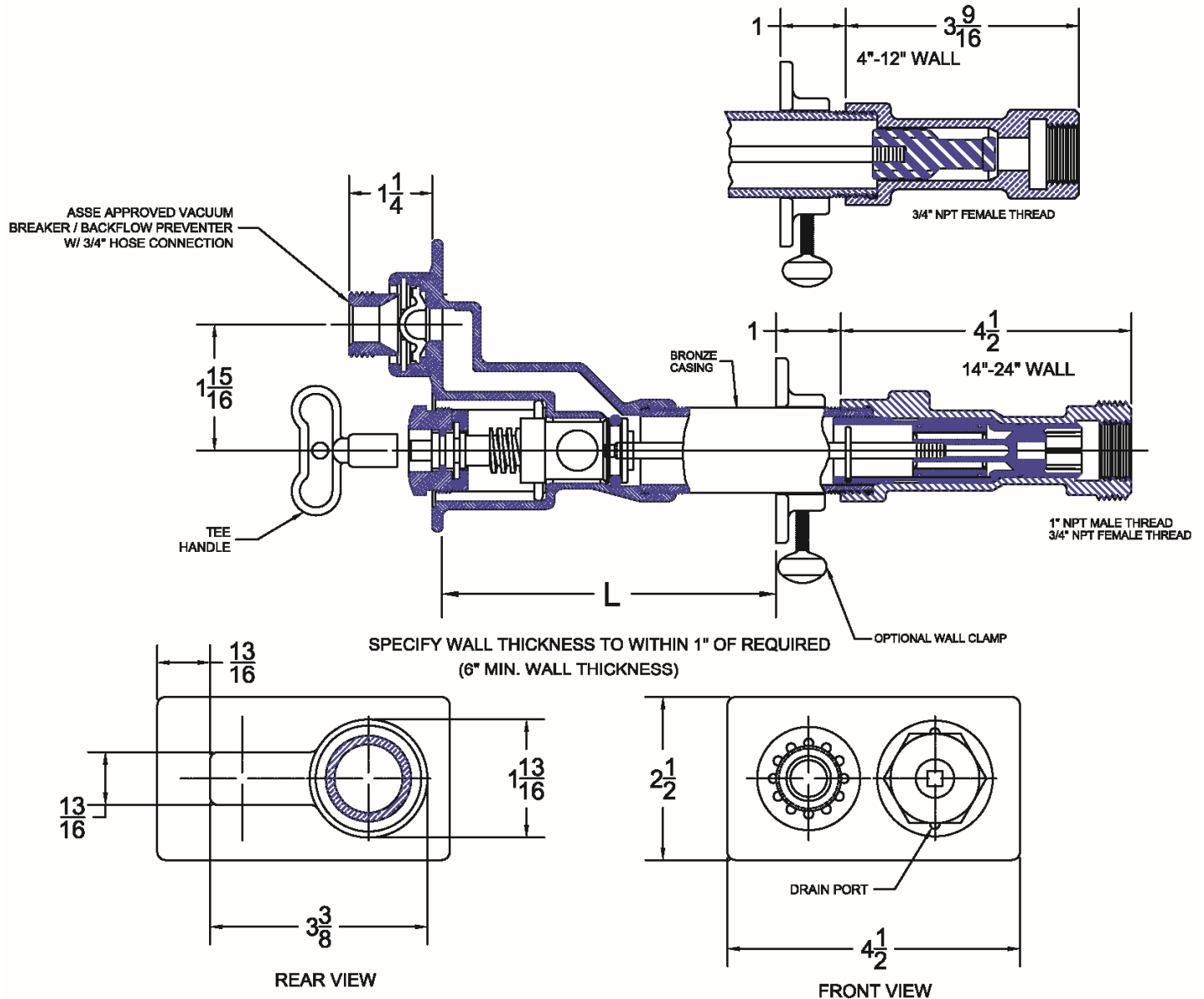


8600 Exposed, Non-Freeze Wall Hydrant

Project		Engineer		Mechanical	
---------	--	----------	--	------------	--



Wall Thickness	Hydrant Face			
	-1 Satin Finish Nickel Bronze	-2 Satin Finish Bronze	-85 Polished Stainless Steel	Rough Bronze w/ Chrome Plated Trim
6"				
8"				
10"				
12"				
14"				
16"				
18"				
20"				
22"				
24"				

Suffix Options		
Suffix	Description	•
-HDR25	Replacement Rod	
-WK02	Repair Kit (Less Rod)	
-87	Wall Clamp	
-88	3/4" Solder Inlet*	
-90	1" Hose Connection*	

Regularly Furnished: Freezeless wall hydrant with compression closure valve, bronze casing, 3/4" hose connection, & anti-siphon backflow preventer. Chrome Plated Trim Standard.

Maximum Working Pressure: 125 PSI

*Dimensions vary from illustration