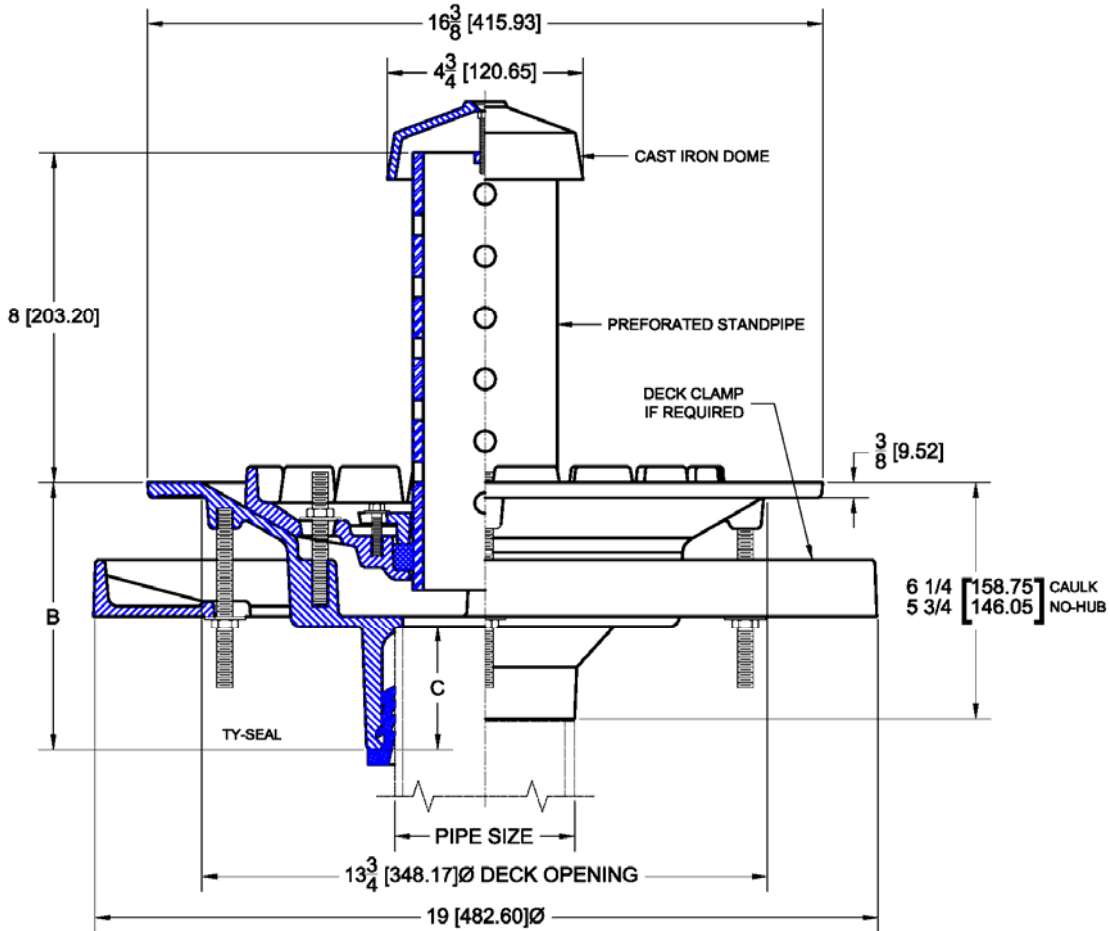


1861 Planting Area Drain with Perforated Standpipe & Dome

Regularly Furnished: Painted cast iron planting area drain with flange, clamping collar, seepage openings, perforated standpipe, secured dome and bottom outlet .



Pipe Size	B	C
2 (50)	6-3/8 (162)	2-1/2 (64)
3 (75)	6 5/8 (168)	2-3/4 (70)
4 (100)	6-7/8 (175)	3 (76)
6 (150)	6-3/8 (162)	3 (76)

Top Material		
✓	Suffix	Description
	-1	Satin Finish Nickel Plated Bronze
	-2	Satin Finish Bronze
	-42	Steel Standpipe / C.I. Dome (Painted)
	-102	Polished Chrome Plated Bronze

Outlet Variations		
✓	Type	Designation
	No-Hub	2NH, 3NH, 4NH, 6NH
	Push On	2TY, 3TY, 4TY, 6TY, 6TX (PVC)
	Inside Caulk	2IC, 3IC, 4IC, 6IC
	Threaded	2IPS, 3IPS, 4IPS, 6IPS

Options		
✓	Suffix	Description
	-ARC	Acid Resistant Coating
	-DIA	Deck Installation Assembly
	-TSD	Trap Seal Device (4405) 2,3,4"
	-39	Galvanized Iron Parts
	-52	Bearing Pan
	-53	Under Deck Clamp
	-56	Longer Standpipe (Specify Length)
	-57	Solid Standpipe (Less Perforations)
	-94	Extension Adapter
	-126	Stainless Steel Mesh Screen Over Standpipe
	-189	Bearing Pan w/ Securing Package