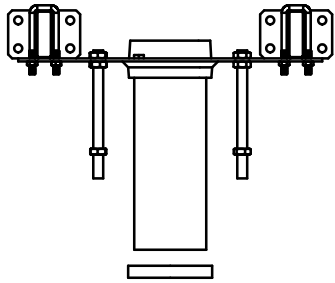


SPECIFICATION:

JOSAM 17730 SERIES FLOOR-MOUNTED, SINGLE, HEAVY-DUTY SINK CARRIER WITH SUPPORT PLATES, ADJUSTABLE COUPLING WITH 4" PIPING CONNECTION, MOUNTING STUDS, STRUCTURAL UPRIGHTS, WELDED FEET AND CHROME PLATED TRIM.

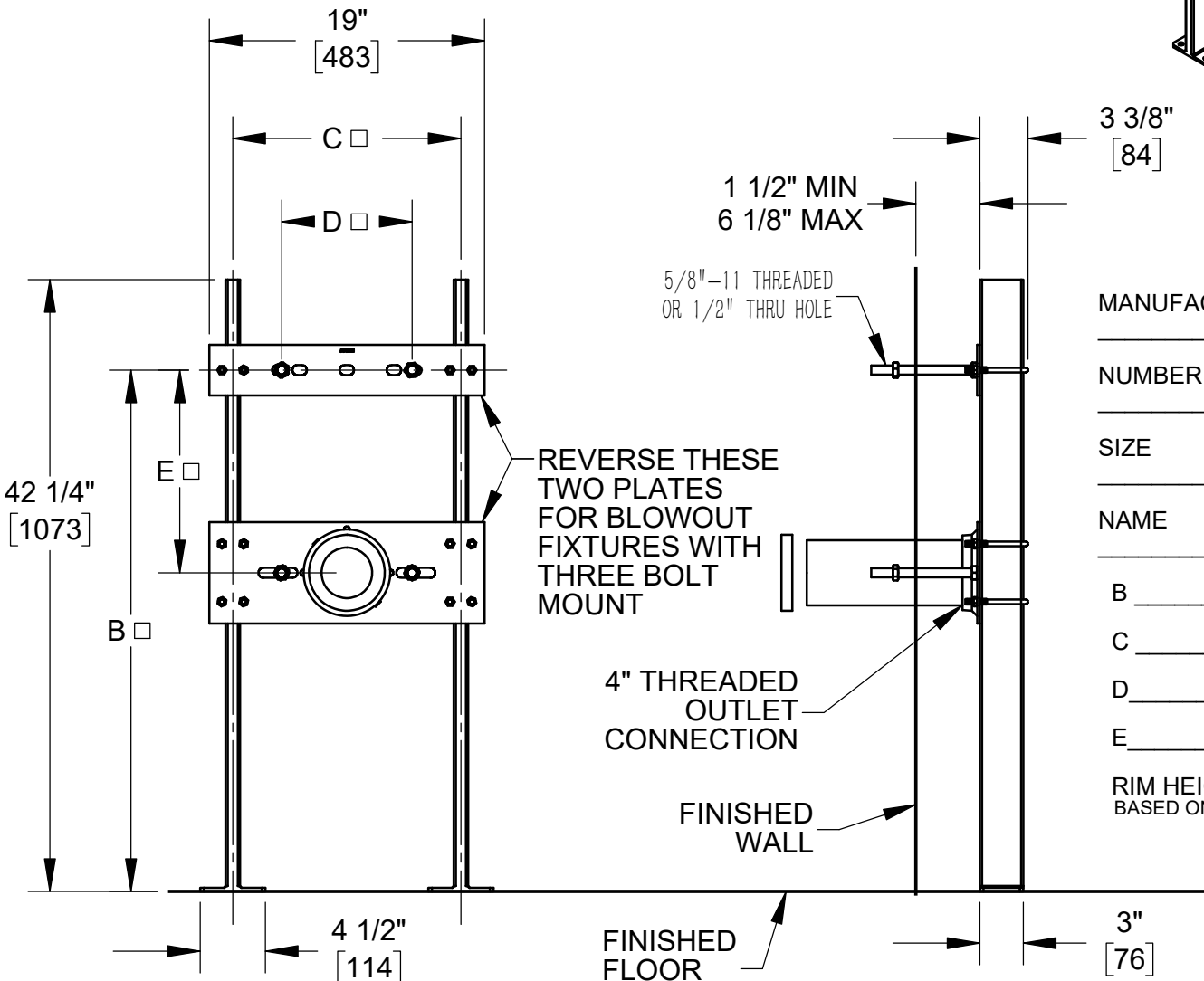
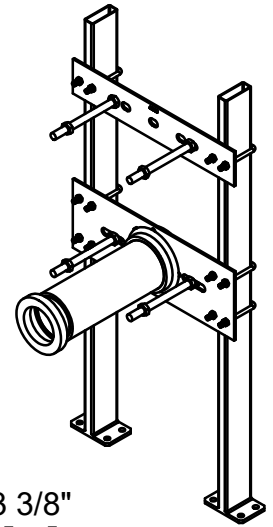
**SINK CARRIER
FLOOR-MOUNT HEAVY-DUTY**

SERIES **17730**



NOTES

1. DIMENSIONS MARKED □ VARY DEPENDING ON MOUNTED FIXTURE.
2. RECOMMEND FEET BE SECURED TO FLOOR WITH 1/2" BOLTS & ANCHORS BY OTHERS.



MANUFACTURER _____
 NUMBER _____
 SIZE _____
 NAME _____

B _____
 C _____
 D _____
 E _____

RIM HEIGHT
 BASED ON "B" DIM SHOWN

-VP	VANDAL-PROOF TRIM
-10	STUDS FOR WALLS OVER 5-3/8" (SPEC. WALL THICKNESS)
-11	CAST IRON ADJUSTABLE EXTENSION (SPECIFY 6", 9" OR 12" ON ORDER)
-60	VALVE PLATE FOR ATTACHING TO UPRIGHT

WARNING: Cancer and Reproductive Harm - www.P65Warnings.ca.gov

DATE OF LAST CHANGE: 06/19/19

DIMENSIONS ARE SUBJECT TO MANUFACTURERS TOLERANCES AND CHANGE WITHOUT NOTICE. WE CAN ASSUME NO RESPONSIBILITY FOR USE OF SUPERSEDED OR VOID DATA.



MICHIGAN CITY, INDIANA

NOTES