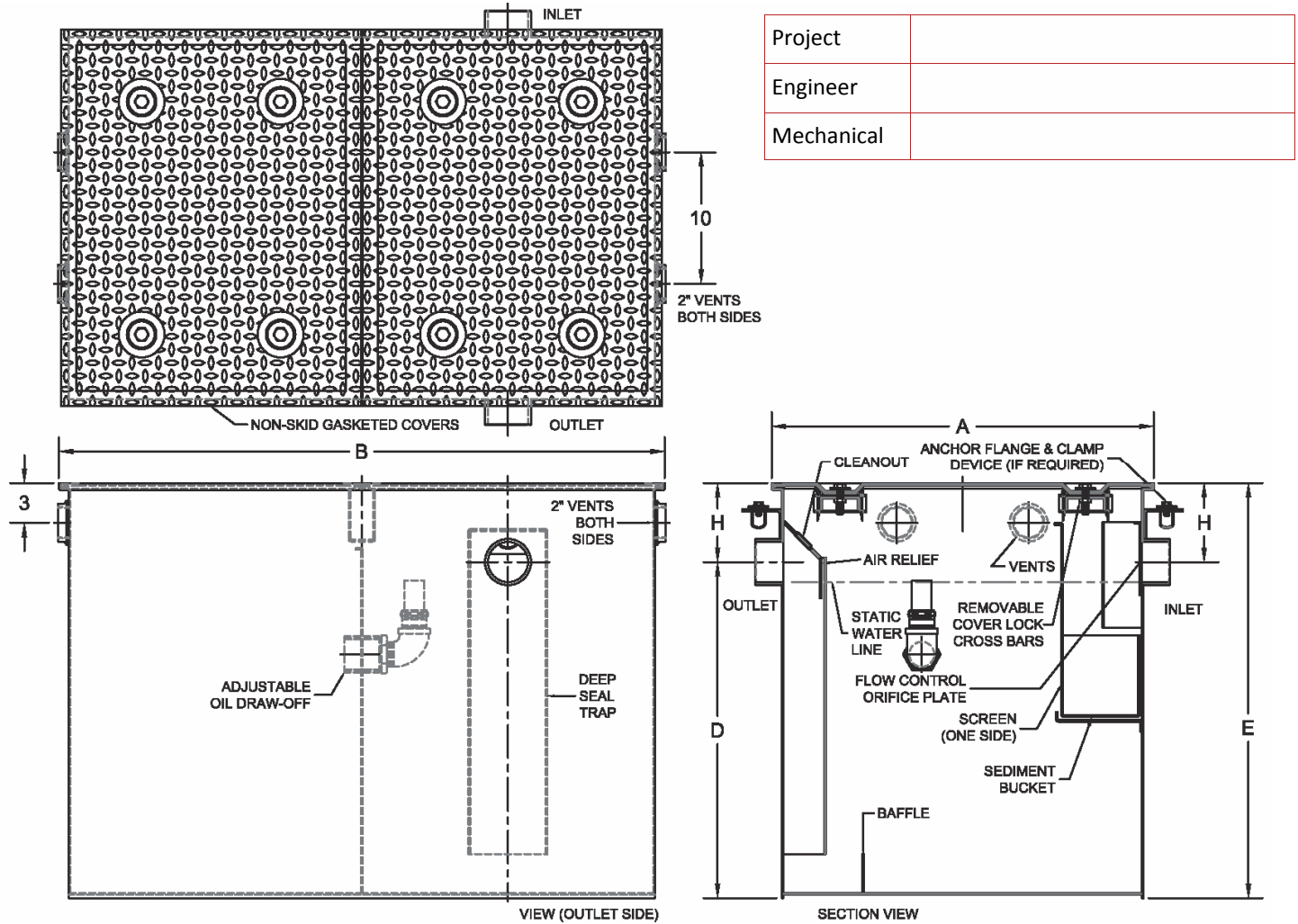


5500 Oil Interceptor with Integral Storage Compartment



Project	
Engineer	
Mechanical	

Size GPM	Interceptor Capacity		Holding Tank Capacity		Dimensions (Inches)					No. of Lids
	Gallons	Cu.Ft	Gallons	Cu.Ft	A	B	D	E	H	
10	10.6	1.4	8.9	1.2	24	26	9	13	4	1
15	15.0	2.0	12.3	1.6	26	26 1/2	11	15	4	1
20	18.0	2.4	14.3	1.9	26	26 1/2	13 1/2	17 1/2	4	1
25	63.1	8.4	65.0	8.7	29	46	25 1/2	30	4 1/2	2
35	100.2	13.4	61.0	8.2	37	44 1/2	26	31	5	4
50	163.0	21.9	117.0	15.5	43	65 1/2	26	32	6	4

Regularly Furnished: Fabricated A.R.C. steel oil interceptor with integral storage compartment, removable baffles, & gasketed cover.

Size / GPM	Inlet / Outlet	•
10	2IPS/2NH	
15		
20		
25	3IPS/3NH	
35		
50		

Suffix Options		
Suffix	Description	•
-18	Heavy Duty Cover *	
-24	Anchor Flange*	
-26	Anchor Flange w/ Clamp Device *	
-AP	High Level Sensor w/ Audible Alarm	
-T	Cover Recessed for Tile (Specify Thickness) *	
-XT	Fixed Extension (Specify Height) *	
Outlet Variations		
-NH	No-Hub	
-IPS	Female Threaded	

*Dimensions vary from illustration