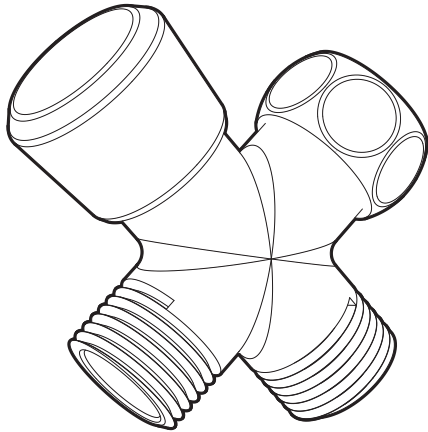


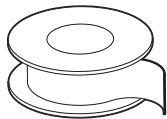
## INSTALLATION INSTRUCTIONS

### Shower Diverter



## TOOLS & SUPPLIES NEEDED

Thread Seal Tape



Adjustable Wrench



## IMPORTANT

### SAFETY TIPS:

Be sure to read and understand all instructions before beginning installation.

Inspect all connections after installation.

Cover the drain to avoid loss of parts.

Be sure to wear proper eye protection.

Do NOT over tighten any connections or damage may occur.

Shut OFF water supplies before beginning installation.

Observe all local plumbing and building codes.

This product is not equipped with a backflow prevention device. A certified backflow prevention device may need to be installed to your product to make it compliant with the relevant backflow requirements of your local plumbing code or UPC.

## MAINTENANCE

Periodic cleaning using a mild soap and warm water will help keep your product's appearance in its original condition.

For best results, dry immediately with a soft, clean cloth. **DO NOT USE** harsh and/or abrasive cleaners.

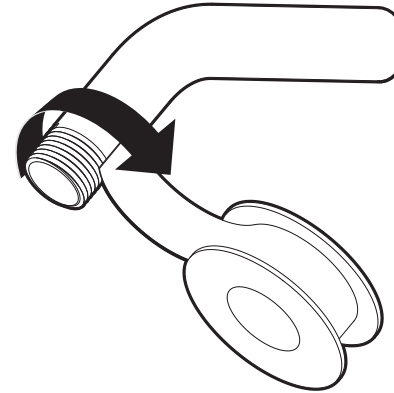
To help restore the finish, occasionally apply a non-abrasive wax to your product (follow manufacturers' instructions).

On CHROME PLATED PRODUCTS, a two (2) part white vinegar, one (1) part water solution can be used to break down excessive mineral deposits on the sprays. Let the product soak in the solution for about ½ hour then rinse thoroughly. Brush off any remaining mineral deposits if necessary.

**DO NOT USE** the vinegar/water treatment on any finish other than Chrome.

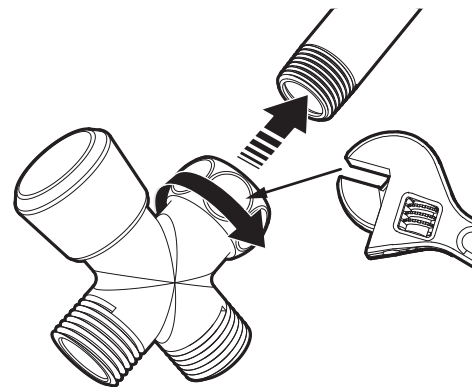
## APPLY THREAD SEAL TAPE

- 1 Apply Thread Seal Tape to the outlet side of shower arm in a clockwise direction.



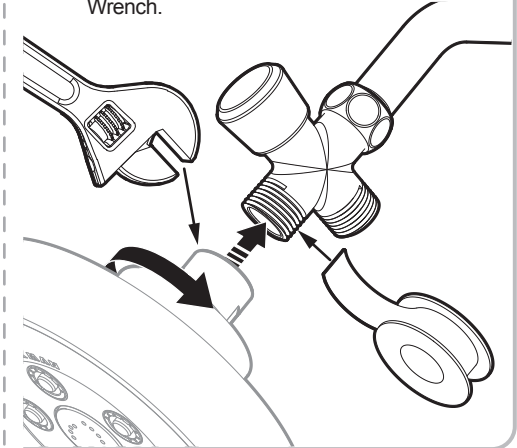
## INSTALL BRACKET

- 2 Thread Diverter Nut onto shower arm by turning it in a clockwise direction. Tighten with Adjustable Wrench.



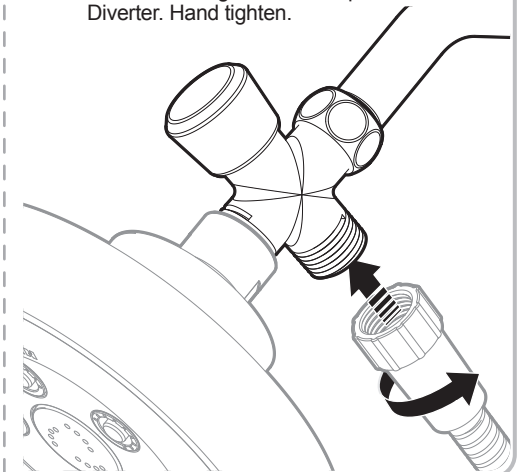
## INSTALL SHOWER HEAD

- 3 Apply Thread Seal Tape to the outlet side of the Diverter in a clockwise direction. Thread Shower Head onto Diverter by turning it in a clockwise direction. Tighten with Adjustable Wrench.



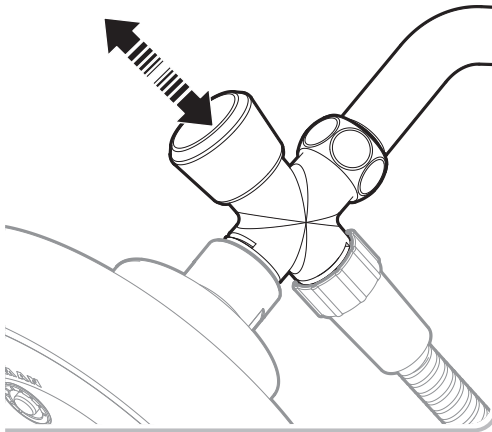
## ATTACH HOSE TO BRACKET

- 4 Ensure Hose Washer is inserted inside Hose End to avoid leaks. Thread Hose End with check valve tag to the outlet port of the Diverter. Hand tighten.



**OPERATION**

- 5 To divert between the shower head and hand shower, simply pull or push the diverter button.



**ROUGH IN DIAGRAM**

