

GY Series

MODEL GYU64 BARRIER-FREE OUTDOOR PEDESTAL MOUNTED BOTTLE FILLER

STANDARD FEATURES

- Adult ADA compliant
- Pushbutton and hands free sensor operated Bottle filler
- Battery pack 6-AA
- Laminar flow water supply to bottle filler
- Resistant to sunlight, heat, moisture and wear
- 12 Gage, heavy duty stainless steel construction with corrosion and scratch resistant finish
- 100 mesh inlet strainer
- Lead and cyst filter (Not available with FRU option)
- Access cover, heavy duty stainless steel, vandal resistant

SUGGESTED SPECIFICATIONS

Barrier-free bottle filler shall be Murdock model GYU64. Construction shall be 12 gage. Pedestal base shall have four mounting holes. Access covers shall be secured with vandal-resistant stainless steel screws. Bottle filler shall be activated by a 9 volt sensor or a pushbutton as standard. Unit shall contain a 100 mesh inlet strainer, lead and cyst filter, 6-AA battery pack and laminar flow spout. Self-closing pushbutton, needing less than 5 pounds force, shall activate internally mounted valve with adjustable stream regulator. Unit is certified to ANSI A117.1, Public Law 111-380 (NO-LEAD), CHSC 116875 and NSF/ANSI 61, Section 9. Fixture meets ADA requirements when mounted appropriately.



Model GYU64-PF Shown

MODEL: (Must Specify)

- GYU64 Satin Stainless Finish (Shown)
- GYU65 Green Powder-Coated
- GYU66 Red Powder-Coated
- GYU67 Blue Powder-Coated

OPTIONAL ACCESSORIES

(additional costs may be incurred)

- CV Cartridge Valve on Fountain (-PF ONLY)
- FRU1 Underground freeze-resistant, 1 valve ¹ (Less Filter and sensor)
- FRU2 Underground freeze-resistant, 2 valves ¹ (Less Filter and sensor)
- IAP In-ground anchor plate
- LOGO Customer specified logo
- MO Bottle filler operated by pushbutton only (required for freeze-resistant valve)
- NP1 Non-pollutable, freeze resistant, 1 valve
- NP2 Non-pollutable, freeze resistant, 2 valves
- PF Pet fountain ¹

Option Notes:

¹ See separate option sheet

Complies with the following standards:



Member of
U.S. Green
Building
Council



Recyclable
Product



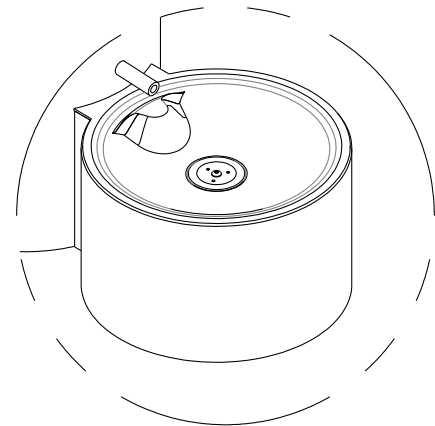
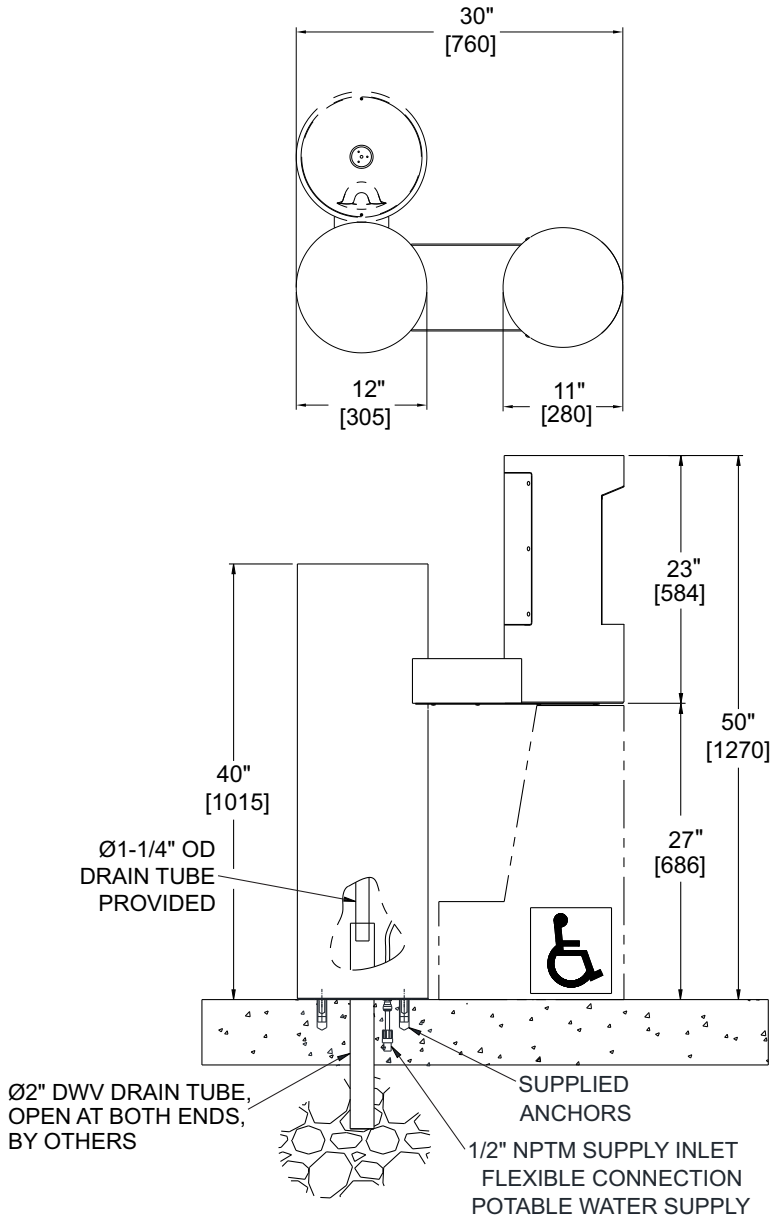
Water
Conserving
Product

WARNING: Cancer and Reproductive Harm - www.P65Warnings.ca.gov

IMPORTANT: INSTALLATION AND SITE PREP FOR FREEZE RESISTANT OPTIONS "-FRU, -NP" WILL DIFFER FROM STANDARD. REFER TO DESIGNATED FREEZE RESISTANT INSTALLATION DETAILS.

GY Series

MODEL GYU64
BARRIER-FREE OUTDOOR
PEDESTAL MOUNTED
BOTTLE FILLER



OPTIONAL -PE
PET FOUNTAIN
DETAIL

* Valve specifications:
Minimum/Maximum Pressure
30 to 100 psi.

Murdock Mfg.™ warrants that its products are free from defects in material or workmanship under normal use and service for a period of one year from date of shipment. Murdock's liability under this warranty shall be discharged solely by replacement or repair of defective material, provided Murdock™ is notified in writing within one year from date of shipment, F.O.B. Industry, California.

| | | | |
|---|--|----------------|--|
| SELECTION SUMMARY & APPROVAL FOR MANUFACTURING | Model Number & Options _____ | Quantity _____ | All dimensions are subject to manufactures tolerance of plus or minus 1/2" nominal and subject to change without notice. Murdock assumes no responsibility for use of void or superseded data. Dimensions may change with the addition of optional accessories. Murdock Mfg.™, Member of Morris Group International™. Please visit www.murdockmfg.com for most current specifications. |
| | Company _____ | | |
| | Contact _____ | Title _____ | |
| | Signature (Approval for Manufacturing) _____ | Date _____ | |