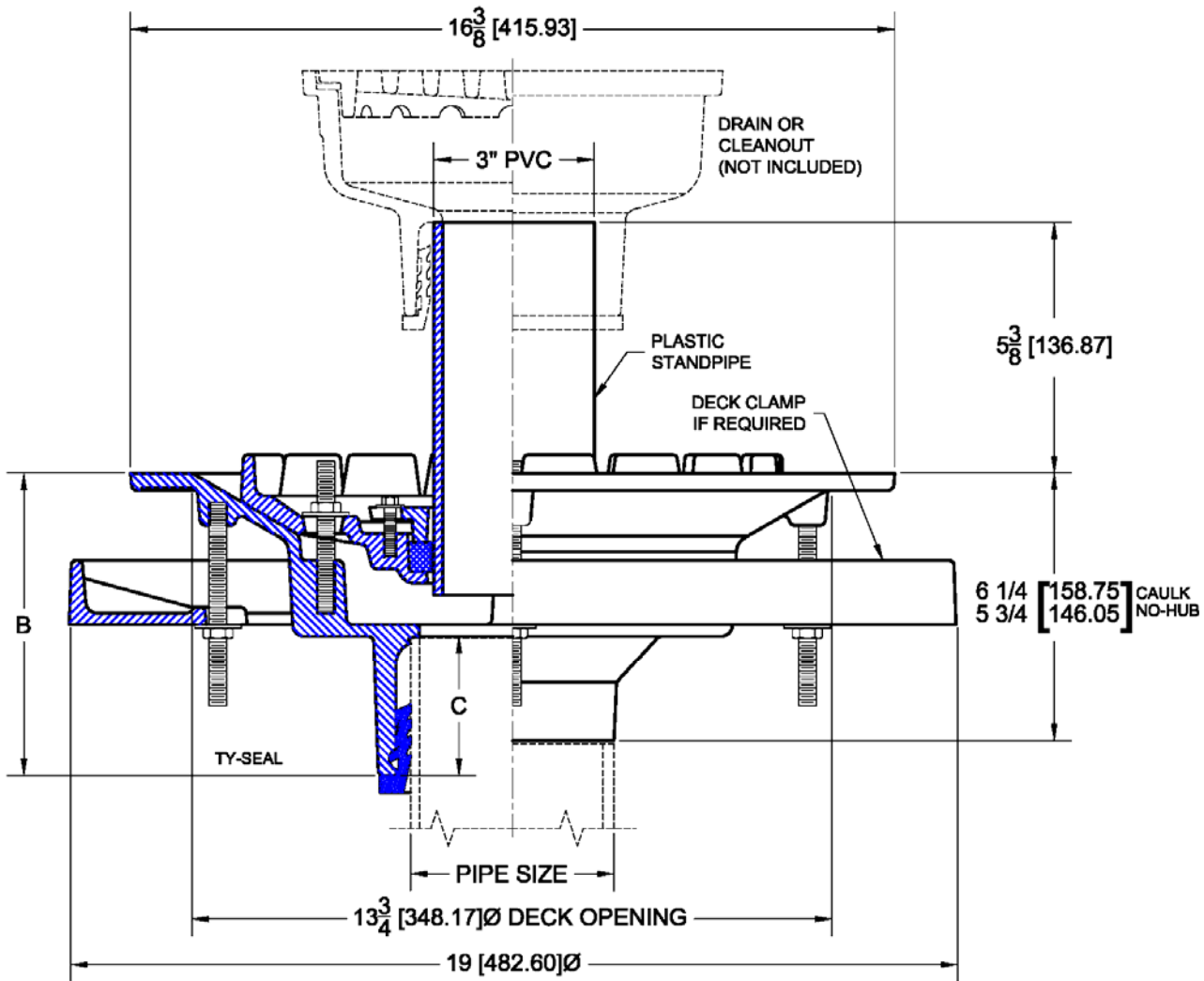


2000 Isolation Deck Drain with Standpipe

Regularly Furnished: Painted cast iron isolation deck drain with anchor flange, seepage openings, clamping collar, PVC standpipe and bottom outlet.



✓	Top Drain / Cleanout	Description
	1100-A6-3TY	Floor Drain w/ Adjustable Strainer
	1640-3TY	Floor Drain (9" Dia. Fixed Top)
	1340-3TY	Floor Drain (9" Dia. Adjustable Top)
	8000-3TY	Floor Cleanout (Adjustable Top)

Top Material (for Upper Drain)		
✓	Suffix	Designation
	-1	Satin Finish Nickel Bronze
	-2	Satin Finish Bronze
	-12	Painted Ductile Iron

Options		
✓	Suffix	Description
	-ARC	Acid Resistant Coating (C.I. Parts)
	-TSD	Trap Seal Device (Model 4405)
	-27	Sediment Bucket (Upper Drain)
	-52	Bearing Pan (Lower Body)
	-53	Under Deck Clamp (Lower Body)
	-39	Galvanized Iron Parts
	-56	Longer Standpipe (Specify Length)
	-189	Bearing Pan w/ Securing Package
Outlet Variations		
	No-Hub	2NH, 3NH, 4NH, 5NH, 6NH
	Push On	2TY, 3TY, 4TY, 6TY, 6TX (PVC)
	Inside Caulk	2Ic, 3IC, 4IC, 6IC