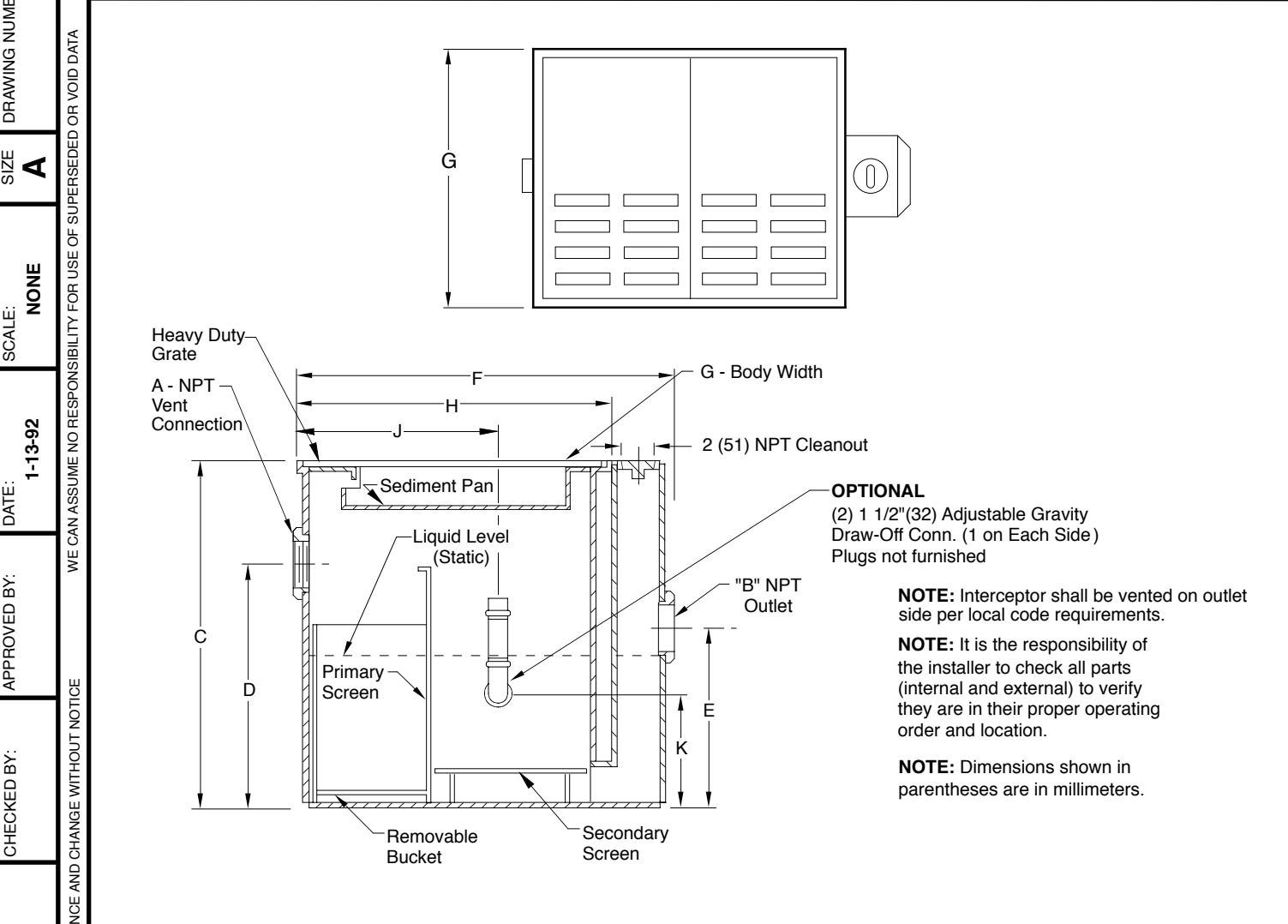


SEDIMENT/OIL INTERCEPTOR



SIZE	SLUDGE CAP LBS	A	B	C	D	E	F	G	H	J	K	No. of 12(305) x 24(610) Grates
8925-12	12	02(50)	02(50)	18(455)	13(330)	10 1/2(265)	17 5/16(440)	12 1/2(320)	12 1/2(320)	9(230)	6(150)	*1
8925-60	60	02(50)	04(100)	26(660)	20(510)	18(455)	29 1/2(750)	12 1/2(320)	24 1/2(620)	19(485)	8(205)	1
8925-100	100	02(50)	04(100)	34(865)	27(685)	22(560)	29 1/2(750)	24 1/2(620)	24 1/2(620)	19(485)	12(305)	2
8925-200	200	02(50)	04(100)	34(865)	27(685)	22(560)	41 1/2(1055)	24 1/2(620)	36 1/2(925)	27(685)	12(305)	3
8925-300	300	02(50)	04(100)	34(865)	27(685)	22(560)	53 1/2(1359)	24 1/2(620)	48 1/2(1232)	27(685)	12(305)	4

*Grate is 12(305) x 12(305)

REGULARLY FURNISHED:
 Fabricated Steel Body with Duco Coating and Sediment Pan w/Stainless Steel Bucket w/Perforated Back, Secondary Screen and Heavy Duty Cast Iron Grating.

VARIATIONS:

- Anchor Flange -F
- Flashing Flange and Clamp -F-C
- Oil Draw-Off Assembly
- Secured Grate

OPTIONAL MATERIAL:

- Stainless Steel Body -SS
- Acid Resistant Coating -ARC
- Ductile Iron Grate -M

FIGURE NUMBER	S	7-27-15	Revised Table Deleted Note Rev. Dwg., Table, Opt. Materials Revised Drawing & Note	TBW	CL	WEIGHT POUNDS	VOLUME CUBIC FEET	FIGURE NUMBER
	R	2-13-14		TBW	CL			
	Q	11-18-13		TBW	TWK			8925
	P	8-27-08		RN	CL			
REV.	DATE	DESCRIPTION	BY	CKD. BY				