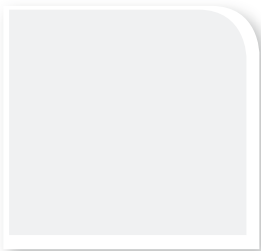


**STST43D Blind Rivets**  
Standard Color Chart



# Stainless 43 Blind Rivet Standard Colors



014 - Bright White



001 - White



348 - Bone White



330 - Warm White



548 - Ivory



422 - Taupe



109 - Sand Beige



553 - Parchment



415 - Beige



248 - Light Stone



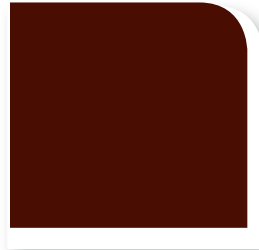
020 - Tan



629 - Sierra Tan



110 - Brown



1111 - Mansard Brown



1193 - Terratone



051 - Charcoal Gray



416 - Slate Gray



324 - Dark Bronze



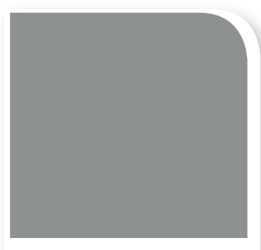
042 - Burnished Slate



537 - Medium Bronze



091 - Zinc Gray



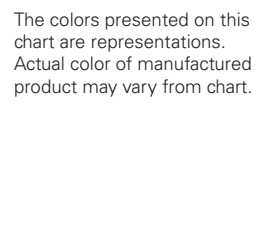
578 - Old Town Gray



302 - Pearl Gray



850 - Ash Gray



The colors presented on this chart are representations. Actual color of manufactured product may vary from chart.



508 - Patina Green



660 - Hemlock



232 - Evergreen



732 - Denali Green



228 - Green



691 - Barn Red



890 - Red



928 - Terra Cotta



102 - Crimson Red



798 - Hartford Green



074 - Colonial Red



393 - Burgundy



012 - Blue



843 - Regal Blue



538 - Tahoe Blue



507 - Matte Black



023 - Black

The colors presented on this chart are representations. Actual color of manufactured product may vary from chart.



1161 - Silver (Metallic)



1160 - Champagne (Metallic)



1162 - Zactique (Metallic)



1116 - Copper Penny (Metallic)

# STST43D Standard Blind Rivet

- Stainless Steel body and mandrel; Dome head
- STST43D - 1/8" diameter: grip range 0.125" - 0.187"
- Ideally suited for metal trim applications and other light gauge installations
- Provides secure and permanent fastening solution
- Good installed appearance
- Won't loosen in high vibration or fatigue applications
- Quality and repeatability of assembly
- No over driving or under driving
- Installed function of the rivet will be consistent and is independent of the installer's technique



## STST43 Blind Rivets Standard Colors 45 Standard Colors

| Color Code | Color Name      | Material No. 250/bag | Color Code | Color Name     | Material No. 250/bag |
|------------|-----------------|----------------------|------------|----------------|----------------------|
| 001        | White           | 791963               | 507        | Matte Black    | 792195               |
| 012        | Blue            | 791968               | 508        | Patina Green   | 792197               |
| 014        | Bright White    | 791971               | 537        | Medium Bronze  | 792211               |
| 020        | Tan             | 791982               | 538        | Tahoe Blue     | 792213               |
| 023        | Black           | 791986               | 548        | Ivory          | 792224               |
| 042        | Burnished Slate | 791995               | 553        | Parchment      | 792228               |
| 051        | Charcoal Gray   | 792001               | 578        | Old Town Gray  | 792244               |
| 074        | Colonial Red    | 792018               | 629        | Sierra Tan     | 792271               |
| 091        | Zinc Gray       | 792023               | 660        | Hemlock        | 792276               |
| 102        | Crimson Red     | 792031               | 691        | Barn Red       | 1298437              |
| 109        | Sand Beige      | 792037               | 732        | Denali Green   | 792315               |
| 110        | Brown           | 792043               | 798        | Hartford Green | 792326               |
| 228        | Green           | 792081               | 843        | Regal Blue     | 792333               |
| 232        | Evergreen       | 792088               | 850        | Ash Gray       | 792336               |
| 248        | Light Stone     | 792097               | 890        | Red            | 792350               |
| 302        | Pearl Gray      | 1298410              | 928        | Terra Cotta    | 792359               |
| 324        | Dark Bronze     | 1088439              | 1111       | Mansard Brown  | 792048               |
| 330        | Warm White      | 1298411              | 1116       | Copper Penny*  | 508807               |
| 348        | Bone White      | 792127               | 1160       | Champagne*     | 516537               |
| 393        | Burgundy        | 792146               | 1161       | Silver*        | 516538               |
| 415        | Beige           | 792163               | 1162       | Zactique*      | 516539               |
| 416        | Slate Gray      | 792164               | 1193       | Terratone      | 1036701              |
| 422        | Taupe           | 1298416              |            |                |                      |

\* Metallic

The colors presented on this chart are representations.  
Actual color of manufactured product may vary from chart.

June 2016

### Technical advice and sales service

SFS intec  
Division Construction  
1045 Spring Street  
PO Box 6326  
US-Wyomissing, PA 19610

800 234 4533  
T +1 610 376 5751  
F +1 610 376 8551  
us.construction@sfsintec.biz  
www.sfsintecusa.com

SFS intec - Canada  
40 Innovation Drive  
Dundas, ON L9H 7P3  
T +1 905 689 5401  
ca.info@sfsintec.biz  
www.sfsintec.ca

**SFS** intec

Turn ideas into reality.