

UNIVERSAL RETROFIT MASTER FLASH®

**20
YEAR
WARRANTY**

ISO Quality, Price & Availability / TWO COMPOUNDS

ADVANCED OZONE RESISTANCE tested to...	EPDM 70 hour @ 500 ppm	SILICONE 70 hour @ 500 ppm
HIGH TEMPERATURE RESISTANCE Tested to	Intermittent +135°C (+275°F)	+260°C (+500°F)
	Continuous +100°C (+212°F)	+225°C (+437°F)
LOW TEMPERATURE RESISTANCE tested to...	-55°C (-67°F)	-74°C (-101°F)
COMPRESSION SET minimum...	25%	50%

*Complete specification data and testing methods are available upon request.

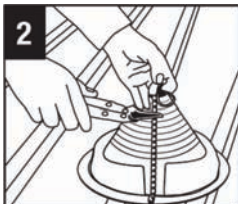
Weather Protection
Made of E.P.D.M. or Silicone,
these flashings are compounded specifically for maximum resistance to weathering due to ozone and ultraviolet light.

Flexible Base
Easily forms to contours of roof panel.

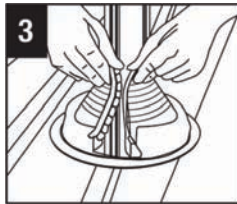


	Pipe Size	Compound	Part No.		Flashing Details	
#1	3/4" - 2-3/4" (19 - 70 mm)	Black EPDM	RF101BS-RD		A-Top opening diameter	3/4"(19.1mm)
		Grey EPDM	RF101GS-RD		B-Cut to suit pipe size	3/4" - 2-3/4" (19 - 69mm)
		Silicone	RF102RS-RD		C-Base dimensions	6 - 3/10" (160mm)
#2	2" - 7-1/4" (50.8 - 184 mm)	Black EPDM	RF201BS-RD		A-Top opening diameter	2" (50.8mm)
		Grey EPDM	RF201GS-RD		B-Cut to suit pipe size	2" - 7-1/4" (50.8 - 184mm)
		Silicone	RF202RS-RD		C-Base dimensions	10-3/4" (273mm)
#3	3-1/4" - 10" (95 - 254 mm)	Black EPDM	RF301BS-RD		A-Top opening diameter	3-1/4" - 10" (50.8mm)
		Grey EPDM	RF301GS-RD		B-Cut to suit pipe size	3-1/4" - 10" (95 - 254mm)
		Silicone	RF302RS-RD		C-Base dimensions	14-1/2" (368mm)

Step 1: For retrofit installation, cut center rubber at base of the stainless joiner and pull apart.



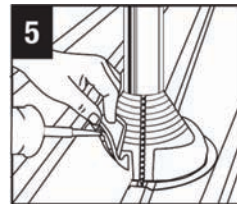
Using tin snips, cut the flashing to fit pipe, starting opposite the Gripper



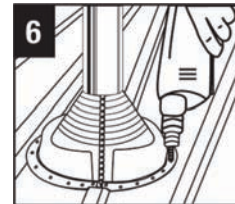
Wrap Retrofit around pipe, join the interlocking teeth starting from the top and proceeding down.



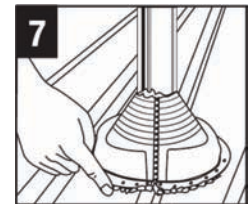
Squeeze Gripper tightly with pliers to crimp, start at the top and work down to the base.



Apply sealant to the underside of the base. Shape Retrofit to roof by pressing the aluminum base to the roof contours.



Fasten Retrofit to roof using self-drilling screws, leave no gaps between base and the roof contours.



Apply additional sealant to Gripper joiner seam and to all areas that could be a potential leak risk.

To see our complete product line go to www.aztecwasher.com

