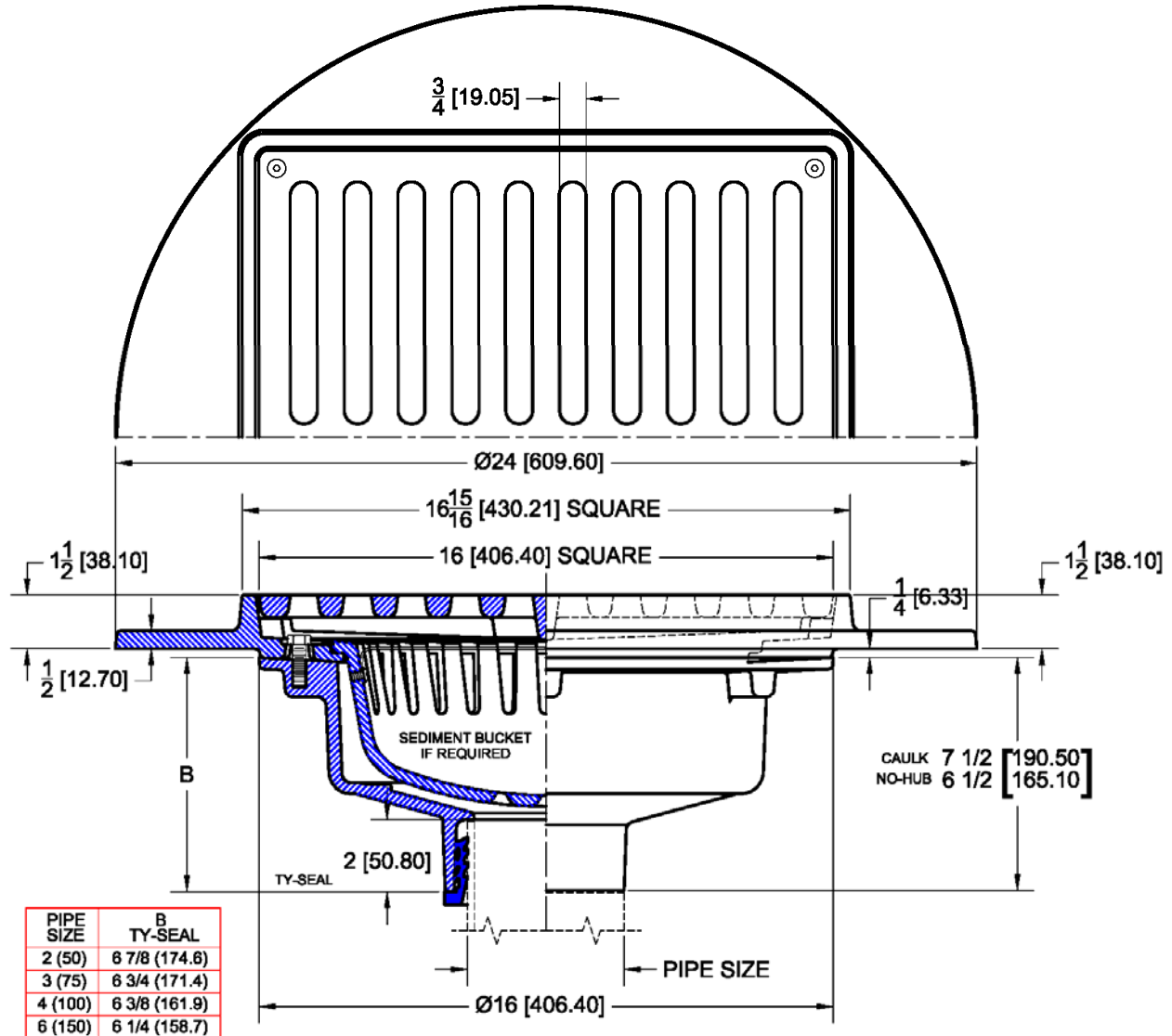


2397 Parking Area Drain with Square Fixed Top – Slotted Grate

Regularly Furnished: Painted cast iron floor drain with wide anchor flange, ductile iron slotted grate, medium sump body, ½” NPT trap primer tap (plugged) and bottom outlet.

ASME Load Rating = S.D. (Special Duty) Over 10,000 Lbs.



| Top Material | | |
|--------------|--------|---|
| ✓ | Suffix | Description |
| | -1 | Satin Finish Nickel Bronze Veneer |
| | -2 | Satin Finish Bronze Veneer |
| | -12 | Ductile Iron |
| | -304 | Satin Finish 304 Stainless Steel Veneer |

| Outlet Variations | | |
|-------------------|--------------|-------------------------------|
| ✓ | Type | Designation |
| | No-Hub | 2NH, 3NH, 4NH, 6NH, 8NH |
| | Push On | 2TY, 3TY, 4TY, 6TY, 6TX (PVC) |
| | Inside Caulk | 2IC, 3IC, 4IC, 6IC, 8IC |

| Options | | |
|---------|--------|---------------------------------------|
| ✓ | Suffix | Description |
| | -ARC | Acid Resistant Coating (C.I. Parts) |
| | -SO | 90 Deg. Side Outlet - 3TY,4TY,6TY,6TX |
| | -TSD | Trap Seal Device (Model 4405) |
| | -VP | Vandal Proof Secured Grate |
| | -26 | Clamp Device |
| | -27 | Sediment Bucket |
| | -31 | Backwater Valve (2,3,4" Only) |
| | -39 | Galvanized Iron Parts |
| | -53 | Under Deck Clamp |
| | -123 | Stainless Steel Mesh Lined Bucket |