



Model BFEZ168-BCD
EZReach Compact
Chilled Bottle Filler



Model A171100w-PS
EZ Wash-N-Go![™]
Hand Wash Station



Model A17 with BF12-BCD
Barrier-free Water Cooler
with H2O-To-Go![®] Indoor
Bottle Filler

murdock[®]
SINCE 1853

Indoor Bottle Fillers and Hand Washing
Water Coolers and Drinking Fountains



EZ

Wash-N-Go!™ HAND WASH STATION

The EZ Wash-N-Go! hand wash station was designed to help schools and businesses reopen as swiftly as possible.



The EZ Wash-N-Go! uses a universal mounting bracket to seamlessly retrofit into most locations where water fountains are already installed, allowing schools and businesses to easily add hand washing capacity.

**MODEL NO.
A171100W-PS**

OPTION NO. -FB
Foot Button



MODEL NO. CM12L/120 104F
Chronomite® Instant-Flow® C-Micro
Point-Of-Use Thermostatic Tankless
Water Heater (Optional)

PATENT NO. D876,890 S



← 6 FT →



**MODEL NO.
A1711.8-SO-BF12-BCD**



**MODEL NO.
A171100W-PS**

FEATURES AND BENEFITS

H₂O-To-Go!® FEATURES

- Hygienic sensor operation
- Multiple filtration options
- Maintenance friendly design
- LED-illuminated backsplash
- Universal Mounting Bracket
 - Alcove-Style Antimicrobial Backsplash

Wash-N-Go!™ FEATURES

- Hygienic sensor operation
- Multi-stream laminar flow
- Universal mounting bracket
 - Alcove-Style Antimicrobial Backsplash
- Stainless Steel J-Spout faucet
- Optional Soap Dispenser

DELUXE Wash-N-Go!™ HAND WASH STATION

MODEL NO. A191400W

*Deluxe Wash-N-Go!™ Indoor
Hand Washing Station*

Designed with Murdock's sleek stylings, the Deluxe Wash-N-Go! combines modern aesthetics with exceptional hygiene standards.

The Deluxe Wash-N-Go! station is ideal for any commercial, educational, or business location that prizes aesthetics as highly as health.

- ADA-compliant
- Warm water heater available

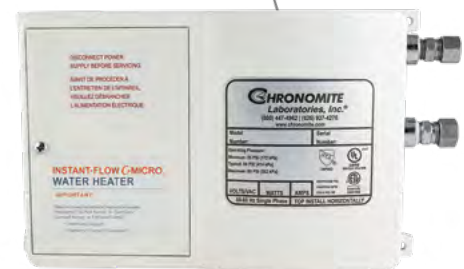
DELUXE A19 WASH-N GO!

- Stainless Steel J-Spout Faucet
- Laminar Flow
- Stylish Design
- ADA Compliant



MODEL NO. CM12L/120 104F

*Chronomite® Instant-Flow® C-Micro
Point-Of-Use Thermostatic Tankless Water
Heater (Optional)*



EZREACH™

COMPACT SURFACE MOUNTED CHILLED BOTTLE FILLER



MODEL NO.
BFEZ168-BCD
EZReach Compact
Chilled Bottle Filler

The Murdock EZReach™ compact bottle filler is two-thirds the size of standard bottle fillers and universally designed to fit most applications.

FEATURES AND BENEFITS

- Sanitary sensor operation
- Crisp, chilled water
- Surface-mounted for easy install
- Front access panel for easy maintenance
- Perfect for kids!
- 12" wall projection (instead of 18")



Patent Pending

Custom COLORS & LOGOS



H2O-To-Go!® Indoor Bottle Filler
with Barrier-Free Water Cooler
BF12-BCD with A171 Series



H2O-To-Go!® Wall Mount Indoor Bottle Filler
BF16-BCD

POWDERCOATED LOGOS

For a look that's more personal, we can integrate powder coated logos, colors and decals on most any Murdock unit. Simply provide us with your team, company or personal logo for a truly unique drinking fountain.

STANDARD FINISHES

Visit www.murdockmfg.com to see all available color and finish options for our products. Finishes not available on every product.

murdock
SINCE 1853

Enviro-Glaze®

Murdock Manufacturing has developed a color coating system which will allow you to purchase durable stainless steel fixtures in designer colors. Enviro-Glaze® is a superior finish which gives you a colorful and functional alternative to a stainless steel finish.

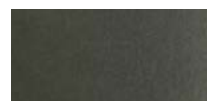
Color Selection



Silver Sage Patina
EG-01 *



Quicksilver
EG-02



Autumn Bronze
EG-03



Yukon Brass
EG-04



River-Rock Granite
EG-05



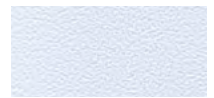
Raindrop
EG-06



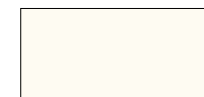
Onyx (black)
EG-07



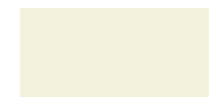
Textured Onyx
(black) EG-08



Diamond White
EG-09



Snow White
EG-10 *



Pearl White
EG-11 *



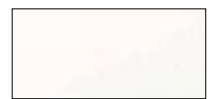
Solar Flame (yellow)
EG-12



Alpine Lake (blue)
EG-13



Firehouse Red
EG-15 *



Matte White
EG-26



Textured Fairway
Green EG-27



Textured Firehouse
Red EG-28



Textured Alpine
Lake EG-29

*For Indoor Use Only

Note: Printed color swatches may differ slightly from actual Enviro-Glaze® coating. Contact your local representative for samples.

CUSTOM COLORS

Thirsty for some color? Custom color powder coats bond with Murdock's seamless drinking fountains and bottle fillers for an eye-catching alternative that is built to last.

*H2O-To-Go!® Indoor Bottle Filler
with Barrier-Free Water Cooler
BF12-BCD with A171*

*Stainless Steel ADA Wall Mount
Water Cooler with matching
Sensor Operated Bottle Filler
A171408F-BF2S*



CUSTOM/MATCH FINISHES

Looking for a specific color to match an existing wall or color pattern? No problem. Murdock has the unique ability to match all Drinking Fountains, Water Coolers and Bottle Fillers to any Pantone® color swatch. Color match your unit so that you don't have to design your space around it... make it a part of the room!





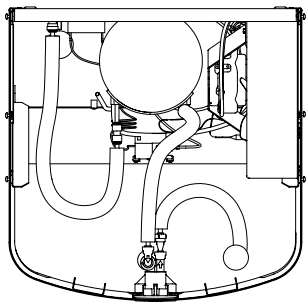
Maintenance Advantage™

Water Cooler by Murdock Manufacturing

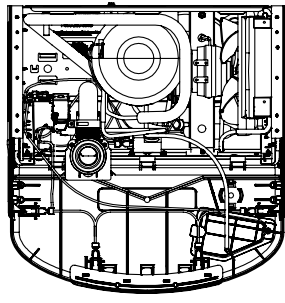
Easy Maintenance + Fewer Parts = MORE SAVINGS!

- **Less Time:** Routine maintenance takes 2 minutes
- **Less Maintenance:** Access water shut off, cartridge, and filter from the front without removing the shroud!
- **Less Expense:** Fewer parts to repair and less expensive parts
- **Less Work:** Universal rough-in will match existing footprints for easy retrofit
- **Water Shut Off:** Exclusive, patented Auto-Stop feature
- **Premium Features at a Value Price**

OURS VS THEIRS



Murdock Water Cooler
27 Parts



Competitor's Water Cooler
60+ Parts



murdock® BOTTLE FILLERS

SINCE 1853

So light & easy to service!



- Easy access with only two top screws to loosen
- Self-holding, lightweight face tilts forward for easy maintenance

murdock® AUTO-STOP

SINCE 1853



AUTO-STOP allows cartridge and strainer service without removing cooler deck to access water supply stop

PATENT No. 10,100,933

Water Coolers



A171 Series - Enhanced Design

FEATURES & BENEFITS (for A171)

- 1 Self-contained, vandal-resistant design with frosted anti-microbial push button activation
- 2 Flexible, anti-microbial non-squirt bubbler delivers 0.3 GPM flow
- 3 Stainless steel
- 4 ADA compliant
- 5 Auto-stop allows cartridge and strainer service without shutting off water



THE BENEFITS OF STAINLESS STEEL

Stainless steel offers many benefits, including:

- Excellent durability
- Aesthetic appeal
- Easy cleaning

The material will maintain its attractive appearance for many years, providing excellent value over the life of the water cooler.



Barrier-Free Wall Mount
Water Cooler Stainless
Steel Finish
A171408F

Barrier-Free Wall Mount
Water Cooler Granite Finish
A171108F

Granite powder coated galvanized steel cabinet and bottom shroud



Barrier-Free Stainless Steel
Vandal-Resistant Wall Mount
Water Cooler A171408S-VR



A17-VR Series

- All-Stainless steel cabinet
- Welded louver screens
- Tamper resistant fasteners
- Available as Single and Universal Bi-Level



Barrier-Free 14-Gauge
Stainless Steel Wall
Mount Water Cooler
A171408S-FG-VR



Barrier-Free Vandal-Resistant
Button Wall
Mount Water Cooler
A171108S-VR

A17FGVR Series

- 14-gauge stainless steel welded construction
- Removable louver screens for internal access
- Tamper resistant fasteners
- Vandal resistant
- Available as Single and Bi-Level



A172 Series - Enhanced Design

- Bi-level construction, self-contained with front push button activation
- Can be installed left unit high or right unit high with no additional parts
- Flexible, anti-microbial non-squirt bubbler delivers 0.3 GPM flow
- Auto-stop allows cartridge and strainer service without shutting off water
- Stainless steel or granite powder coated galvanized steel cabinet and bottom shroud
- ADA compliant

Barrier-Free Vandal-Resistant
Button Wall Mount Bi-Level
Water Cooler A172108S-VR



Stainless Steel ADA Wall
Mount Bi-Level Water Cooler
with Flexible Bubbler
A172408F-UBL

Barrier-Free Wall Mount
Universal Bi-Level Water
Cooler Granite Finish with
A172108F-UBL

Water Cooler

And Bottle Filler Combinations



H2O-To-Go!® Indoor Bottle Filler with Barrier-Free Water Cooler (BF12-BCD with A171)

Vandal-resistant stainless steel body

Custom colors and logos available

Cost-effective

FEATURES & BENEFITS

- 1 "Replace Filter" indicator message
- 2 Bottle Counter Display (BCD), optional
- 3 Automatic LED lighting (standard) with BCD option
- 4 No-splash 1 gpm laminar flow
- 5 Sensor-activated water flow
- 6 Recessed curvature provides easy filling for all bottle sizes
- 7 Grey trim allows for seamless components
- 8 Antimicrobial flexible bubbler, push button and backsplash



Barrier-Free water cooler with H2O-To-Go!® indoor bottle filler BF12-BCD with A171

(Shown with optional Bottle Counter Display)

Patent No. D873,608

**Bi-Level Barrier-Free Water Coolers
with H2O-To-Go!® Indoor Bottle Filler
BF12-BCD with A172**

(Shown with optional Bottle Counter Display)



BF2S

Uses refrigerated water from host water cooler
Environmentally friendly design reduces plastic
bottle consumption
ADA compliant

FEATURES & BENEFITS (for BF2S)

- 1 18 gauge stainless steel
 - 2 Touch-free sensor activation
 - 3 1 gpm quick fill flow rate allows users to fill water bottles quickly
 - 4 Bottle counter displays the number of plastic bottles saved
- Laminar flow eliminates splash
Removable top for easy installation and maintenance
Works with A171, VR and others

*Barrier-Free Wall Mount Water Cooler with Bottle Filler
A171408F Unit shown in optional custom powdercoated blue*

Bottle Fillers

Stand Alone and Water Cooler Mounted

BF16 SERIES - WALL MOUNT

Stand alone H2O to-go!® indoor bottle filler
(Shown with optional Bottle Counter Display)

- 1 Easy to read digital filter notice and Bottle Counter Display (optional BCD)
 - 2 Automatic LED lighting (standard) with BCD option
 - 3 Sensor-activated water flow
 - 4 Recessed curvature provides easy filling for all bottle sizes
 - 5 The catch tray offers a place to set your bottle when filling
 - 6 Heavy duty vandal-resistant stainless steel body
- Custom colors and logos available
 - Optional - Manual push button
 - Filtration options available
 - Cost-effective
 - Antimicrobial backsplash



H2O-To-Go!® Stand-Alone
Surface Mount Sensor Operated
Bottle Filler BF16



All Stainless Steel Sensor Operated Bottle Filler
BF2S-BCD (with optional bottle counter display)

BF2S

- Uses refrigerated water from host water cooler
- Environmentally friendly design reduces plastic bottle consumption
- ADA compliant
- Heavy duty design



H2O-To-Go!® Deck Mount
Sensor Operated Bottle
Filler BF12-BCD

H2O-To-Go! BF12-BCD

- No-splash laminar flow provides quick 1 gpm flow rate
- Automatic LED lighting brightens when bottle is detected, (when Bottle Counter Display [BCD] is specified)
- Grey trim allows for seamless components
- Deck mount design
- Uses refrigerated laminar flow water from host water cooler
- Manual push button optional



All Stainless Steel Push button
Operated Deck Mount Bottle Filler

BF1S

- Deck mount design
- Uses refrigerated laminar flow water from host water cooler
- 100% lead and brass free and ADA compliant



Sensor Activated
Semi-Recessed Self-Contained
Bottle Filler BF4

BF4

- Semi-recessed/sensor activation
- Constructed of vandal and ligature resistant stainless steel
- Features key latch and hinged door for simple maintenance
- ADA compliant with forward and side reach requirements
- Non-refrigerated

Water Coolers



15-Inch Wide
Freestanding Water
Cooler Granite Finish
A611108F

A611 Series

Attractive granite powder coated freestanding design

- Flexible anti-rotation, non-squirt bubbler
- Copper tubing on stainless steel tank evaporator
- Optional hot water service
- ARI rated at 8 gallons/hour



15-Inch Wide Freestanding
Water Cooler A611408F
featuring custom color
and graphics



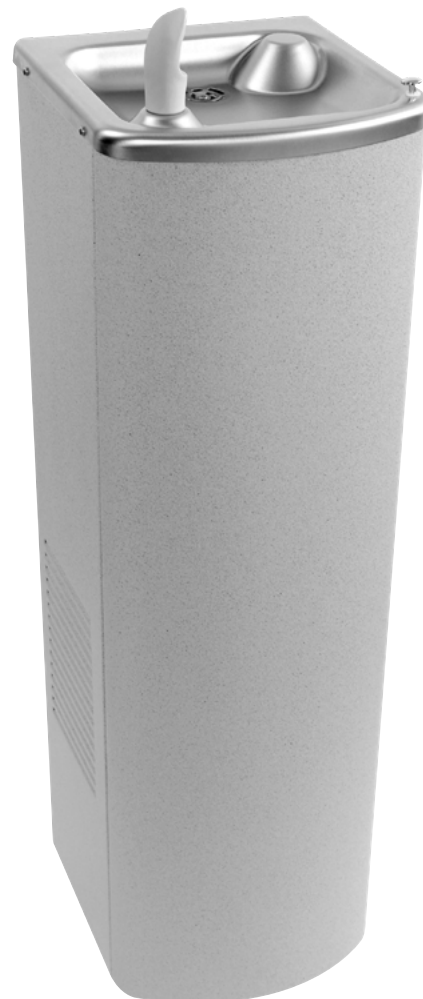
15-Inch Wide Wall Mount Cooler
Granite Finish A311108F



15-Inch
Wide Wall
Mount Cooler
A311408F

A311 Series

- Attractive granite powder coated wall mount design
- Flexible anti-rotation, non-squirt bubbler
- Optional hot water glass filler (-HGF)
- ARI rated at 8 gallons/hour



12-Inch Wide Freestanding Water
Cooler Granite Finish A511105F



12-Inch Wide
Freestanding Water
Cooler A511405F

A511 Series

- Compact granite powder coated freestanding design
- Flexible anti-rotation, non-squirt bubbler
- Optional hot water glass filler (-HGF)
- ARI rated at 5 gallons/hour



BOTTLE FILLERS Refrigerated

BF48

- Sensor operation delivers a 1.0 GPM flow rate
- Can be mounted in a 4" or larger wall space for simple installation virtually anywhere
- Slim and trim, vandal resistant design blends into any environment
- Fabricated of type 304 stainless steel polished to a satin finish
- ADA compliant with forward and side reach requirements
- Integral 8 GPH chiller mounted below
- Custom colors and logos available



*Semi-Recessed Sensor
Chilled Bottle Filler BF48*



BF38

- Push button operation delivers a 1.0 GPM flow rate
- Semi-recessed, can be mounted in a 4" or larger wall space for simple installation virtually anywhere
- Slim and trim, vandal resistant design blends into any environment
- Fabricated of type 304 stainless steel polished to a satin finish
- ADA compliant with forward and side reach requirements
- Integral 8 GPH chiller mounted below

*Semi-Recessed Push Button
Chilled Bottle Filler BF38*



H2O-To-Go!® Stand-Alone Wall Surface
Mount Sensor Operated Refrigerated
Bottle Filler Model BF168



Murdock's Maintenance Advantage® ensures easy fixes in less time and fewer necessary repair parts, all at less cost!



So light & easy to service!

- Easy access with only two top screws to loosen
- Self-holding, lightweight face tilts forward for easy maintenance



Very low profile!

Stand-alone H2O-To-Go!® indoor bottle filler (BF16) with remote chiller (A9100080-A)

- 8 gph Chiller
- Bottle Filler shown with Bottle Counter Display Option



Patent No. D873,608

Drinking Fountains

With Bottle Fillers

A152 & A152.8 Series

- Barrier free wall mount bi-level construction
- 18 gauge, type 304 stainless steel with a brushed finish
- Activated by self-closing frontal push pads
- Integral P-trap, stainless steel bubbler and bottle filler
- ADA compliant



Rounded Box Barrier-Free Wall Mount Bi-Level Drinking Fountain with Sensor Activated Bottle Filler
A152400S-VR-BF16-BCD



Rounded Box 14-Gauge Stainless Steel Box Barrier-Free Wall Mount Bi-Level Drinking Fountain
A152400S-FG-BF4 -BCD



Rounded Box Chilled Barrier-Free Wall Mount Bi-Level Drinking Fountain with Sensor Activated Bottle Filler
A152408F-BF4-W32-BCD

A151 & A151.8 Series

- Barrier free wall mount construction
- 18 gauge, type 304 stainless steel with a brushed finish
- Unique two-piece contoured rectangular bowl
- Integral P-trap, stainless steel bubbler and bottle filler
- ADA compliant



*Rounded Box Barrier-Free Wall Mount Drinking Fountain with Sensor Activated Bottle Filler
A151400S-BF4-BCD*



*Rounded Box Chilled Barrier-Free Wall Mount Drinking Fountain with Sensor Activated Bottle Filler
A151408S-BF4-BCD*



*Oval Bowl Barrier-Free Wall Mount Drinking Fountain with Sensor Activated Bottle Filler
A131400S-BF4-BCD*

A131 & 131.8 Series

- 18 gauge, type 304 stainless steel with a brushed finish
- Activated by self-closing front push button
- Unique two-piece contoured round bowl
- Integral P-trap, stainless steel bubbler and bottle filler
- ADA compliant



*Oval Bowl Chilled Barrier-Free Wall Mount Bi-Level Drinking Fountain with Sensor Activated Bottle Filler
A132408S-BF4-W32-BCD*



*Oval Bowl Barrier-Free Wall Mount Drinking Fountain with Sensor Activated Bottle Filler
A131400S-BF4-BCD*



*Oval Bowl Chilled Barrier-Free Wall Mount Drinking Fountain with Sensor Activated Bottle Filler
A131408S-BF4-BCD*

A132W32 & A132.8 Series

- Wall mount bi-level construction
- 18 gauge, type 304 stainless steel with a brushed finish
- Activated by self-closing front push button
- Integral P-trap, stainless steel bubbler and bottle filler
- ADA compliant





Drinking Fountains



Rounded Box ADA Wall Mount Drinking Fountain A151400S

A441 Series

ADA contoured box fountain constructed of 18-gauge, type 304 stainless steel

- Stainless steel anti-rotational, non-squirt bubbler
- Integral P-trap
- 14-gauge model available



14-Gauge Stainless Steel Box Wall Mount Drinking Fountain A441400S-FG

A441FG Series

Short contoured box fountain constructed of 14-gauge type 304 stainless steel

- Stainless steel anti-rotational, non-squirt bubbler
- Integral P-trap





Stainless Steel Recessed Drinking Fountain with Cuspidor A481400S-CUSP (for drinking fountain & cuspidor -also available separately)

A481 Series

- Recessed 18-gauge, type 304 stainless steel construction with 16-gauge frame
- Stainless steel bubbler
- Optional cuspidor (-CUSP)



Push Button Bubbler Wall Mounted Drinking Fountain GWB24

GWB24

- Round bowl 18-gauge, type 304 stainless steel construction
- Stainless steel push button bubbler



A421 Series

- Round fountain constructed of 18-gauge, type 304 stainless steel
- Stainless steel anti-rotational, non-squirt bubbler
- Integral P-trap



Oval Bowl Wall Mount Drinking Fountain A421400S



Square Wall Mount Drinking Fountain A4B1400Q

A4B1Series

- Simple and economical 18-gauge, type 304 stainless steel construction
- Stainless steel push button bubbler
- Optional P-trap (-PT1)



Square Wall Mount Drinking Fountain A4A1400Q

A4A1 Series

- Economical square 18-gauge, type 304 stainless steel construction
- Great choice for small spaces
- Push button bubbler



DRINKING FOUNTAINS

Accessible and Recessed



*Oval Bowl Barrier-Free Wall Mount Bi-Level Drinking Fountain (reverse model shown - right side high)
A132400S-W32-RBL*

A132 Series

- 18-gauge, type 304 stainless steel wall mount design with 32" back panel
- Stainless steel bubbler and integral P-trap
- ADA compliant
- Patented Integral Stop





A181 Series

- 18-gauge, 304 stainless steel cabinet with 16-gauge frame
- Stainless steel, non-squirt bubbler
- Optional cuspidor (-CUSP)
- ADA compliant



Barrier-Free Stainless Steel Recessed Drinking Fountain with Cuspidor A181400S-CUSP

(for drinking fountain & cuspidor - also available separately)



A131 Series

- Round, wall mount design
- Stainless steel anti-rotation, non-squirt bubbler and integral P-trap
- ADA compliant



Oval Bowl Barrier-Free Wall Mount Drinking Fountain A131400S

DRINKING FOUNTAINS

Accessible



*Rounded Box Barrier-Free
Wall Mount Bi-Level Drinking
Fountain A152400F-W32*



*14-Gauge Stainless Steel
Box Barrier-Free Wall Mount
Bi-Level Drinking Fountain
A152400S-FG-W32*

A152 & A152FG Series

18-gauge, type 304 stainless steel construction with 32" back panel

- Bi-level wall mount contoured box fountains
- Integral P-traps
- 14-gauge model available
- ADA compliant





14-Gauge Stainless Steel Box Barrier-Free Wall Mount Drinking Fountain A151400S-FG

Rounded Box Barrier-Free Wall Mount Drinking Fountain A151400S

A151 & A151FG Series

Long contoured box style fountain constructed of 18-gauge, type 304 stainless steel

- Stainless steel bubbler and integral P-trap
- 14 gauge model available (shown on left)



Cast Iron Barrier-Free Wall Mount Bi-Level Drinking Fountain A152J00S

A152J Series

- Two contoured, white enamel coated cast iron box fountains
- Resistant to sunlight, heat, moisture and wear
- Stainless steel bubblers
- ADA compliant



Electric Drinking Fountains



*Rounded Box Chilled
Barrier-Free Wall Mount Bi-Level
Drinking Fountain A152408S-FG-W32*

A152.8 Series

- Wall mount 18-gauge, type 304 stainless steel construction
- Stainless steel bubbler and integral P-trap
- ARI rated at 8 gallons/hour
- ADA compliant



A181 Series

- Vandal resistant electric design is inverted for ADA compliance
- 18-gauge, type 304 stainless steel construction with 16-gauge frame
- Stainless steel bubbler
- ARI rated at 8 gallons/hour



*Barrier-Free (Chiller
on Top) Stainless Steel
Recessed Chilled
Drinking Fountain
A181408S*



*14-Gauge Stainless Steel Box Chilled
Barrier-Free Wall Mount Bi-Level
Drinking Fountain A152408S-FG-W32*

Stainless Steel
Recessed Chilled
Drinking Fountain
with Cuspidor
A481408S-CUSP
(drinking fountain &
cuspidor - also
available separately)



Oval Bowl Chilled
Barrier-Free Wall Mount
Bi-Level Drinking Fountain
A132408S-W32-RBL (reverse
model-right fountain high shown)
A132408S-W32

A481.8 & A481.8CUSP Series

- Electric, vandal resistant design
- 18-gauge, type 304 stainless steel construction with 16-gauge frame
- Stainless steel bubbler
- Optional cuspidor available (-CUSP)
- ARI rated at 8 gallons/hour



A132.8 Series

- Bi-level wall mount 18-gauge, type 304 stainless steel construction
- Stainless steel bubbler and integral P-trap
- ARI rated at 8 gallons/hour
- ADA compliant



Oval Bowl Chilled Barrier-Free
Wall Mount Drinking
Fountain A131408S

A131.8 Series

- Wall mount 18-gauge, type 304 stainless steel vandal resistant construction
- Polished stainless steel anti-rotation, non-squirt bubbler
- ARI rated at 8 gallons/hour
- ADA compliant



Rounded Box Chilled Barrier-Free
Wall Mount Drinking
Fountain A151408S

14-Gauge Stainless Steel
Box Chilled Barrier-Free
Wall Mount Drinking
Fountain
A151408S-FG

A151.8 Series

- Wall mount 18-gauge, type 304 stainless steel construction
- Polished stainless steel anti-rotation, non-squirt bubbler
- ARI rated at 8 gallons/hour
- ADA compliant



SCHOOL & ATHLETICS LOGOS

SHOW YOUR PRIDE

Bolster school spirit and boost team pride with Murdock Drinking Fountains, Water Coolers and Bottle Fillers customized with your school or athletics colors and logo!



Model BF12-BCD with A172

Bi-Level Barrier-Free Water Coolers with H2O-To-Go!® Indoor Bottle Filler



Model A171408-BF2

Barrier-Free Wall Mount Water Cooler with Heavy Duty Bottle Filler



Model BF16-BCD

H2O-To-Go! Wall Mount Indoor Bottle Filler with Bottle Counter

murdock[®]
SINCE 1853

Murdock[®] Hydration Products

P.O. Box 3527 • City of Industry, CA 91744-0527 U.S.A.
Tel 800-45-DRINK • 626-333-2543 • www.murdockmfg.com

INNOVATIVE SPIRIT AND ENGINEERING FOUNDATION

“What sets us apart from competitors is our engineering and spirit. We have a ‘can-do’ spirit. If you ask us to do something, we will do it or figure out how to do it. That’s the part our customers like, that’s the part we like.”

- Don Morris, President and CEO, Morris Group International

L1001364
0420



MORRIS GROUP
INTERNATIONAL

BRANDS BUILT TO LAST!™

morriskgroup.co