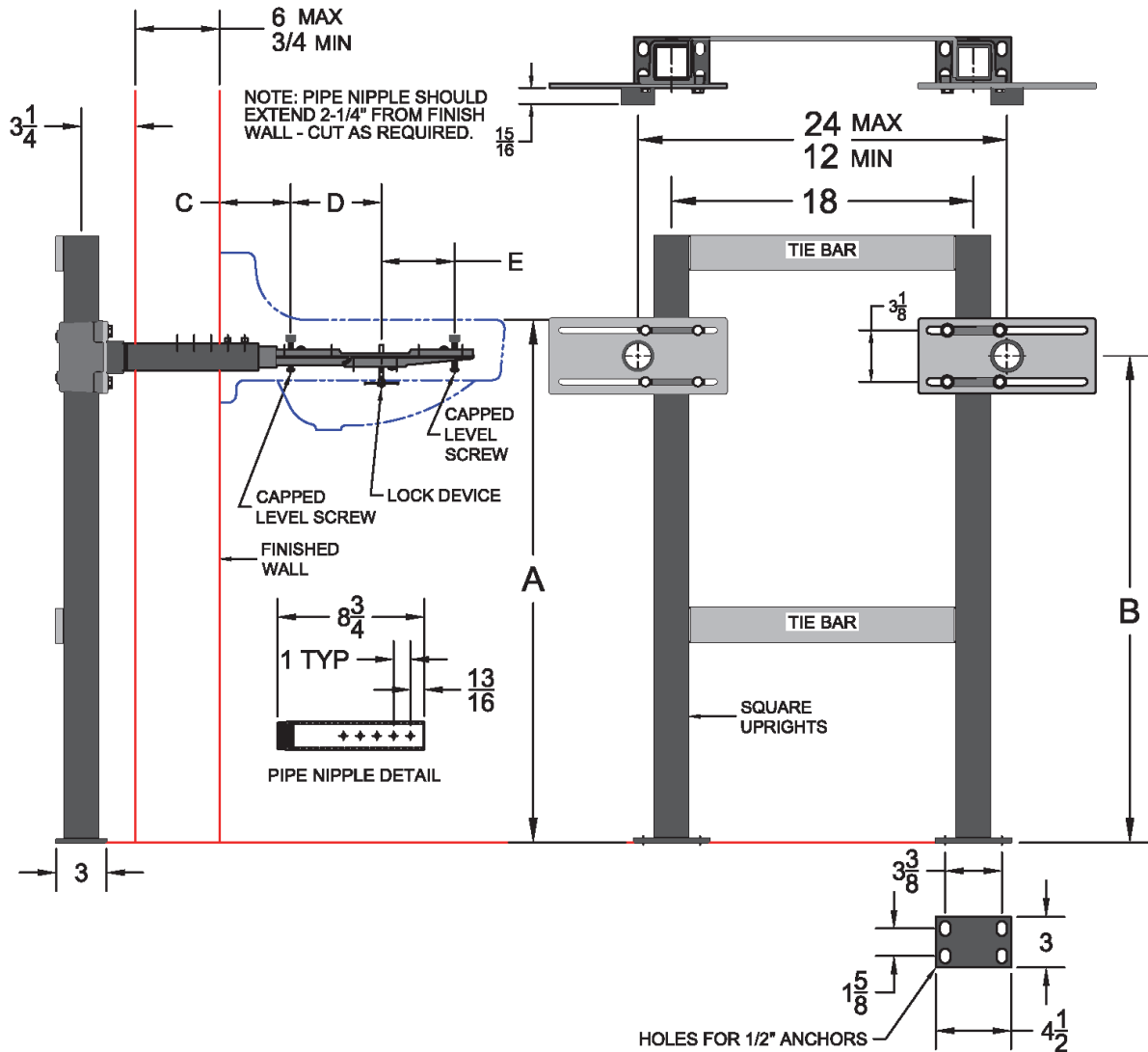


## 525 Lavatory Carrier (Concealed Arms)

Project	Engineer	Mechanical
---------	----------	------------

Conforms to ASME A112.6.1M Type II Lavatory Carrier—Max Load Test 250 Lbs.



Model	Configuration	•
525	Single	
525-D	Double (Back to Back)	

Suffix Options		
Suffix	Description	•
-AM27	Valve Support Plate on Upright * (Specify Valve)	
-D	Back to Back Fixture Support *	
-M4	Extended Wall Nipples (Per Inch)	
-M18	Extra Long Uprights*	
-M23	2" Chrome Plated Escutcheons *	
-M23/4	4" Chrome Plated Escutcheons *	
-M24/6	6" Chrome Plated Escutcheons *	
-M24	Wheelchair Lavatory installation *	
-M25	Longer Rear Leveling Screws (High Back Lav)	
-M36	Rectangular Uprights *	
-SC43	Shroud Support *	

**Regularly Furnished:** Single lavatory carrier with rectangular uprights, rectangular base feet, cast iron concealed arms & non-slip locking devices.

\*Dimensions vary from illustration