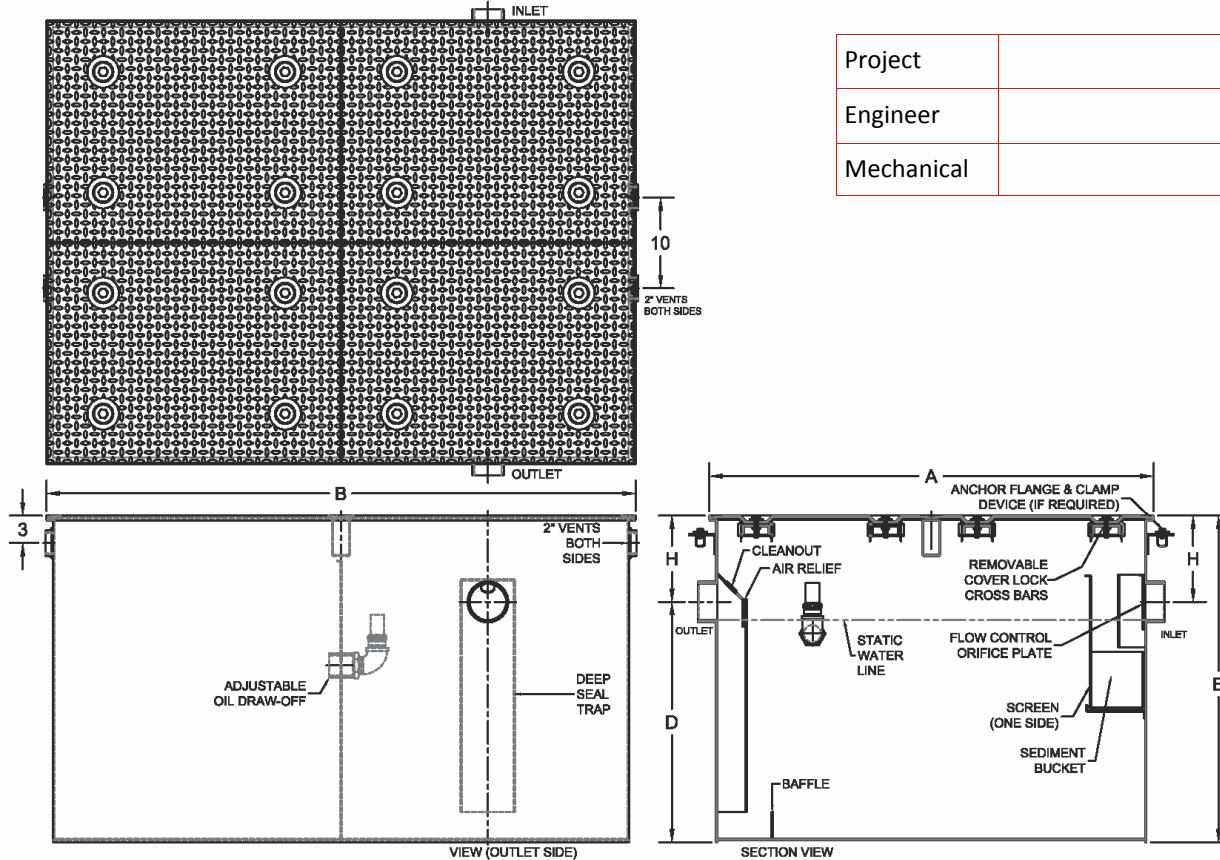


5501 Large Capacity Oil Interceptor with Integral Storage Compartment



Project	
Engineer	
Mechanical	

Size	Pipe Size	Interceptor Capacity		Holding Tank Capacity		Dimensions (Inches)					No. of Lids
		Gallons	Cu.Ft	Gallons	Cu.Ft	A	B	D	E	H	
75	4"	202	27.0	122	16.3	49	65	26 1/2	36	9 1/2	4
100	4"	303	40.5	238	31.8	58	90	26 1/2	36	9 1/2	4
125	4"	344	46.0	269	36.0	62	90	28	40	12	9
150	4"	357	47.7	233	31.1	66	76	30	44	14	9
200	4"	453	60.5	347	46.4	73	90	30 1/2	48	17 1/2	9
250	4"	589	78.7	348	46.7	73	90	35 1/2	51	15 1/2	9
300	4"	815	108.9	345	46.2	95	86	36 1/2	52	15 1/2	9
350	6"	1066	142.5	569	76.0	101	94	43 1/2	60	16 1/2	9
400	6"	1109	148.3	562	75.2	108	91	43	60	17	9
450	6"	1113	148.8	566	75.7	119	83	43	60	17	9
500	6"	1240	165.8	559	74.8	119	83	46	66	20	9

Regularly Furnished: Fabricated A.R.C. steel oil interceptor with integral storage compartment, removable baffles, & gasketed cover.

Size / GPM	Inlet / Outlet	•
75	4IPS/4NH	
100		
125		
150		
200		
250		
300	6IPS/6NH	
350		
400		
450		
500		

Suffix Options		
Suffix	Description	•
-18	Heavy Duty Cover *	
-24	Anchor Flange*	
-26	Anchor Flange w/ Clamp Device *	
-AP	High Level Sensor w/ Audible Alarm	
-T	Cover Recessed for Tile (Specify Thickness) *	
-XT	Fixed Extension (Specify Height) *	
Outlet Variations		
-NH	No-Hub	
-IPS	Female Threaded	

*Dimensions vary from illustration