

**SPECIFICATION:**

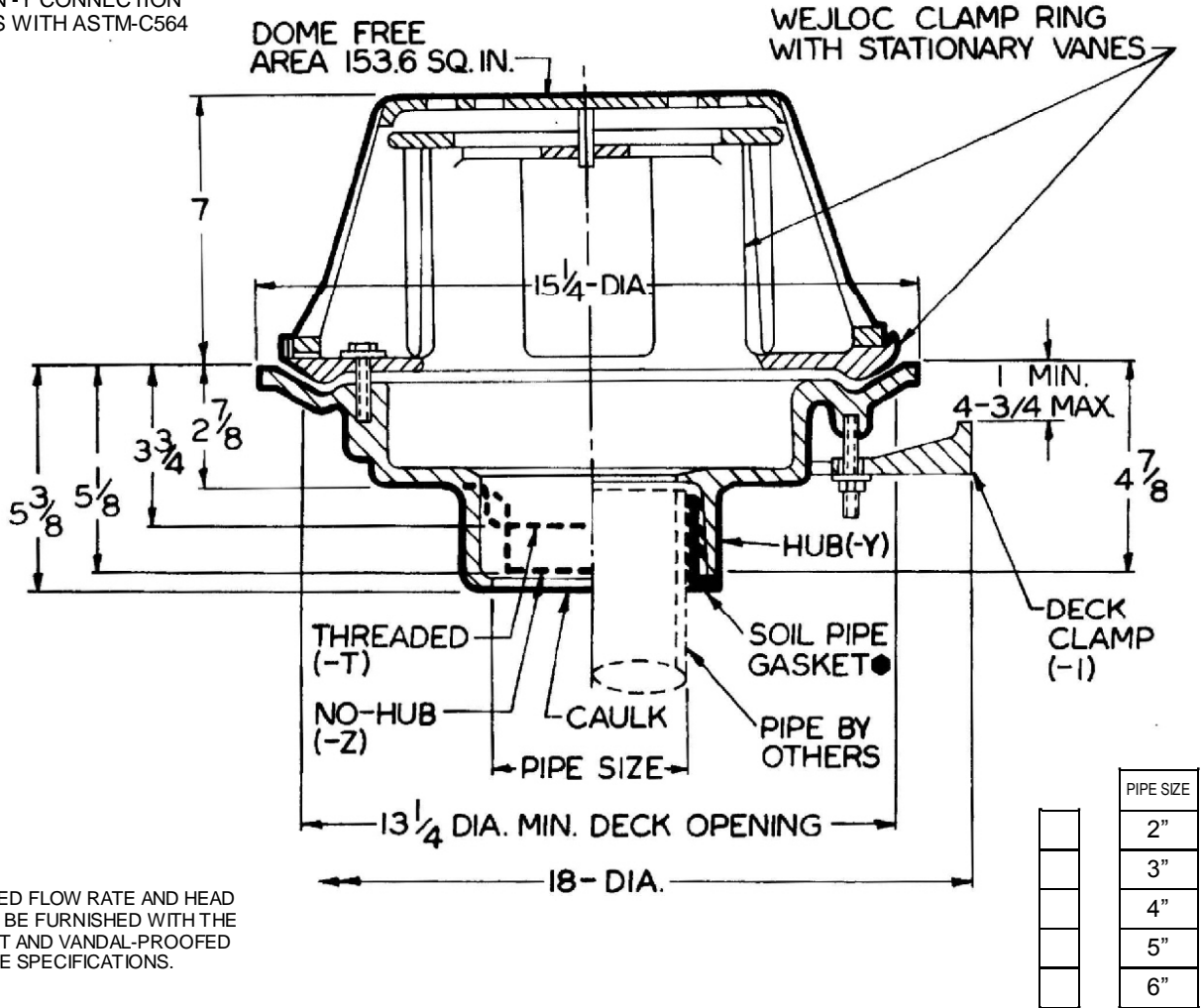
JOSAM 28600 SERIES COATED CAST IRON FLO-SET® ROOF DRAIN, LARGE SECURED DOME, ADJUSTABLE CALIBRATED VANDAL-PROOF VANE COLLAR, WEJLOC® NON-PUNCTURING CLAMP RING WITH STATIONARY VANES AND INTEGRAL GRAVEL STOP, LARGE SUMP WITH WIDE ROOF FLANGE AND BOTTOM OUTLET.

**ROOF DRAIN  
FLO-SET®**

**SERIES**

**28600**

● GASKET ON -Y CONNECTION CONFORMS WITH ASTM-C564



SPECIFY DESIRED FLOW RATE AND HEAD AND DRAIN CAN BE FURNISHED WITH THE VANES PRE-SET AND VANDAL-PROOFED TO THESE SPECIFICATIONS.

- ▼  -AE THREADED LEVEZE® ADJ. EXT.
- CR CLAMPING DRAIN RECEIVER (MIN. DECK OPENING Ø16")
- 1 DECK CLAMP ASSEMBLY
- 2 DRAIN RECEIVER
- 3 DECK CLAMP ASSEMBLY AND DRAIN RECEIVER
- 4 SECONDARY FLASHING CLAMP (-AE ONLY)
- 10 FIXED EXTENSION COLLAR, CAST IRON (SPECIFY HEIGHT\*\*)
- 10-20 FIXED EXTENSION COLLAR, GALVANIZED (SPECIFY HEIGHT\*\*)
- 20 GALVANIZED CAST IRON PARTS

- 23 ROUGH BRONZE DOME
- 26 ALUMINUM DOME
- 33 STAINLESS STEEL MESH-COVERED DOME
- VP VANDAL-PROOF DOME
- 66 NO-HUB SIDE OUTLET (2" THRU 6" OUTLETS ONLY)
- T THREADED OUTLET
- X INSIDE CAULK OUTLET
- Y HUB OUTLET W/ GASKET (2", 3" & 4" SIZES ONLY)
- Z NO-HUB SPIGOT OUTLET

▼ SEPARATE SUBMITTAL FOR THIS OPTION AVAILABLE

\*\* -10 EXTENSION 4" STANDARD

DRAWING No. 9/05/07

A-11556-K

**JOSAM COMPANY**  
MICHIGAN CITY, INDIANA

NOTES: