

| | | | | | | | | | |
|---------------|-------------------------|---------------|----------------|-----------------|----------------|-------------|---------|-----------------------------------|---|
| FIGURE NUMBER | 8610, 8625, 8645 | DRAWN BY: CMD | CHECKED BY: SW | APPROVED BY: SW | DATE: 10-13-98 | SCALE: NONE | SIZE: A | DRAWING NUMBER: s8610, 8625, 8645 | L |
|---------------|-------------------------|---------------|----------------|-----------------|----------------|-------------|---------|-----------------------------------|---|

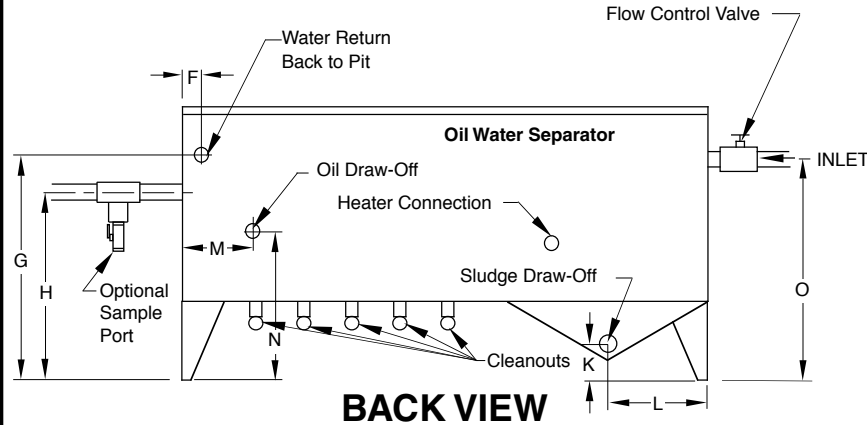
DIMENSIONS ARE SUBJECT TO MANUFACTURERS TOLERANCE AND CHANGE WITHOUT NOTICE

WE CAN ASSUME NO RESPONSIBILITY FOR USE OF SUPERSEDED OR VOID DATA

ULTRACEPT® WATER COHESIVE OIL/WATER SEPARATOR

U. S. Pat. No. 6,139,730

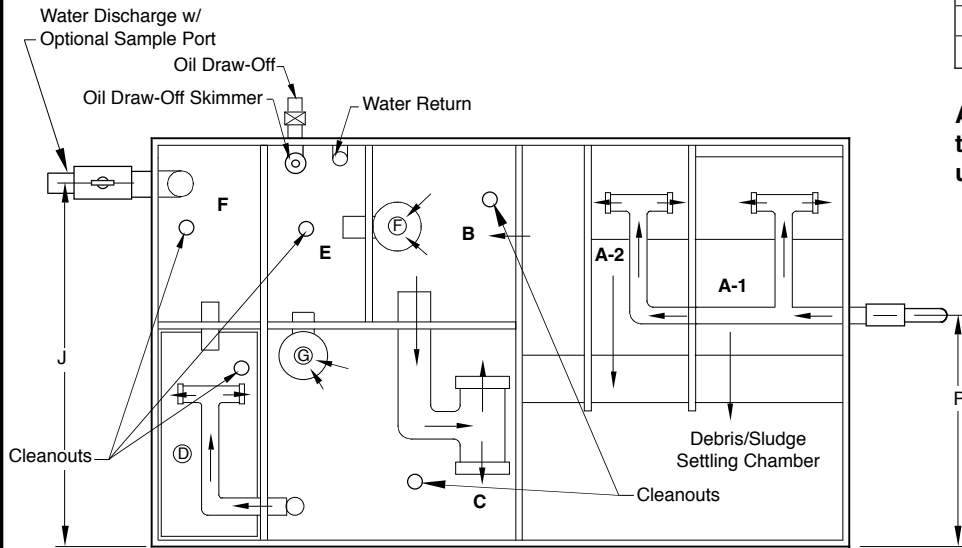
ACCEPTED FOR USE
CITY OF NEW YORK
DEPARTMENT OF BUILDINGS
MEA-350-96-E



BACK VIEW

| Model | Construction Material | Flow Rate GPM | Inlet | Outlet | Water Return | Sludge Draw-Off | Oil Outlet | Waste Oil Cap | Length | Width | Height | Weight | Water Volume |
|-------|-----------------------|---------------|-------|--------|--------------|-----------------|------------|---------------|--------|-------|--------|----------|--------------|
| 8610 | S,M | 10 | 2" | 3" | 1 1/2" | 3" | 1 1/2" | 23 gal | 72" | 36" | 48" | 925 lbs | 400 gal |
| 8625 | S,M | 25 | 2" | 3" | 1 1/2" | 3" | 1 1/2" | 29 gal | 84" | 48" | 48" | 1175 lbs | 628 gal |
| 8645 | S,M | 45 | 2" | 3" | 1 1/2" | 3" | 1 1/2" | 35 gal | 96" | 48" | 48" | 1395 lbs | 718 gal |

S = Stainless Steel M = Mild Steel



TOP VIEW

| Model | F | G | H | J | K | L | M | N | O | P | Q |
|-------|--------|-------|-------|-------|------|-------|--------|-------|-------|-------|-----|
| 8610 | 18.07 | 35.82 | 33.7 | 29.88 | 6.00 | 12.07 | 21.875 | 28.82 | 43.69 | 18.00 | 72 |
| 8625 | 18.99 | 31.70 | 33.70 | 6.00 | 6.00 | 18.07 | 23.875 | 21.70 | 43.57 | 24.00 | 112 |
| 8645 | 26.875 | 36.00 | 33.88 | 42.12 | 6.15 | 18.07 | 32.31 | 29.00 | 43.88 | 24.00 | 128 |

All Cleanouts and Water Return Lines are to be plumbed to a common 3" Line that goes back to Surge Pit. All external plumbing fittings are Sch. 40 PVC unless otherwise specified.

- | | |
|--|--|
| A Inlet Compartment | K Sludge draw-off height from grade |
| B Primary Skimming Compartment | L Sludge draw-off from side |
| C Secondary Skimming Compartment | M Oil draw-off from side |
| D Final Polishing Compartment | N Oil draw-off height from grade |
| E Oil Collection Compartment | O Inlet height from grade |
| F Water Return from Side | P Inlet location from side |
| G Water Return height from grade | Q Cubes (ft.) |
| H Water Discharge height from grade | |
| J Water Discharge from side | |

NOTE: Ultracept® units exposed to freezing temperatures may require pipe insulation to be installed on exposed plumbing. Pipe insulation is by others.

SMITH® JAY R. SMITH MFG. CO.®
 MEMBER OF MORRIS GROUP INTERNATIONAL
 POST OFFICE BOX 3237
 MONTGOMERY, ALABAMA 36109-0237 (USA)
 TEL: 334-277-8520 FAX: 334-272-7396 www.jrsmith.com

ASPE
 PDI
 ASSP
 MEMBER OF: Professional Boiler Plant Tech

| REV. | DATE | DESCRIPTION | BY | CKD. BY | WT. LBS | VOL. CF |
|------|----------|------------------------|-----|---------|---------|---------|
| L | 5-22-18 | Revised Figure Number | TBW | CL | | |
| K | 8-22-11 | Rev. Fig. No., Tables | TBW | TWK | | |
| J | 05/13/09 | Added Sch. 40 PVC note | JJ | SW | | |
| H | 01/09/09 | Spelling Correction | JJ | SW | | |
| G | 2-28-05 | Revised Table | TBW | SW | | |

| | | | | | | | | | |
|---------------|-------------------------|------------------|-------------------|--------------------|-------------------|----------------|-----------|--|---|
| FIGURE NUMBER | 8610, 8625, 8645 | DRAWN BY: CMD | CHECKED BY: SW | APPROVED BY: SW | DATE: 10-13-98 | SCALE: NONE | SIZE A | DRAWING NUMBER s8610, 8625, 8645 BS | F |
|---------------|-------------------------|------------------|-------------------|--------------------|-------------------|----------------|-----------|--|---|

DIMENSIONS ARE SUBJECT TO MANUFACTURERS TOLERANCE AND CHANGE WITHOUT NOTICE

WE CAN ASSUME NO RESPONSIBILITY FOR USE OF SUPERSEDED OR VOID DATA

ULTRACEPT® WATER COHESIVE OIL/WATER SEPARATOR

THE OIL REMOVAL PROCESS

From the surge pit, either above or below grade, contaminated water is pumped to the Ultracept® oil/water separator. The separator, having been filled with clean water prior to start-up, then uses the clean water to promote and enhance waste separation. The effluent from the pit passes through a screen in compartment A to remove any floating debris. The oil is skimmed as the effluent passes through compartment B and C. Skimmed oil and the water that transports it empties into compartment E. The water that transported the oil into compartment E is then automatically drained back to the surge pit. The oil collected in compartment E is periodically removed for disposal during factory recommended scheduled maintenance, or can be continually decanted into a separate container.

The flow of water through the unit allows the cleanest water to be drawn from the bottom of each compartment. From the bottom of compartment B, water is siphoned through the T-pipe to the top of compartment C. The transfer pipe in compartment C transfers the clean effluent to compartment D where it is gravity discharged to an approved sewer system.

The Ultracept® System features simplicity. No moving parts, no filters, no coalescing plates or chemicals are used for oil removal. For proper performance, a minimum size surge pit of 4x4x4 is required and the ratio of oil to water entering the unit shall not exceed 15% oil to 85% water. No additive can be used that will leave oil emulsified in the waste water.

Ultracept® equipment is modular in design, so that modifications or additions may be made to always keep operations in compliance with EPA regulations.

TYPICAL APPLICATIONS

- Service and Wash Areas
 - Trucks and Automobiles
 - Heavy Equipment
 - Fork Lifts
 - Engine Rebuilders
- Process Water Cleanup
 - Asphalt Plants
 - Industrial Plants
 - Compressors
 - Generators
- Environmental Cleanup
 - Parking Lot Run-off
 - Groundwater Remediation
 - Holding Ponds
 - Oil and Gasoline Spills

REGULARLY FURNISHED:

Modular Unit, Flow Control Valve. All Required
Plumbing Components, Sch. 40 PVC.

VARIATIONS:

- Heaters for Outside Freeze Protection (HK)
- Surge Pit Alarm (Tank Alert)
- Sample Port
- Copper Plumbing (Outside Only)

SMITH® JAY R. SMITH MFG. CO.®
 MEMBER OF MORRIS GROUP INTERNATIONAL
 POST OFFICE BOX 3237
 MONTGOMERY, ALABAMA 36109-0237 (USA)
 TEL: 334-277-8520 FAX: 334-272-7396 www.jrsmith.com



| | | | | | | |
|------|----------|-------------------------------------|-----|---------|---------|---------|
| F | 5-22-18 | Revised Figure Number | TBW | CL | | |
| E | 6-16-17 | Revised Variations | TBW | CL | | |
| D | 8-22-11 | Rev. Fig. No. | TBW | TWK | | |
| C | 05/14/09 | Added Sch. 40 PVC & Optional Copper | JJ | SW | | |
| B | 10/10/03 | Added Optional Sample Port | JJ | SW | | |
| REV. | DATE | DESCRIPTION | BY | CKD. BY | WT. LBS | VOL. CF |