

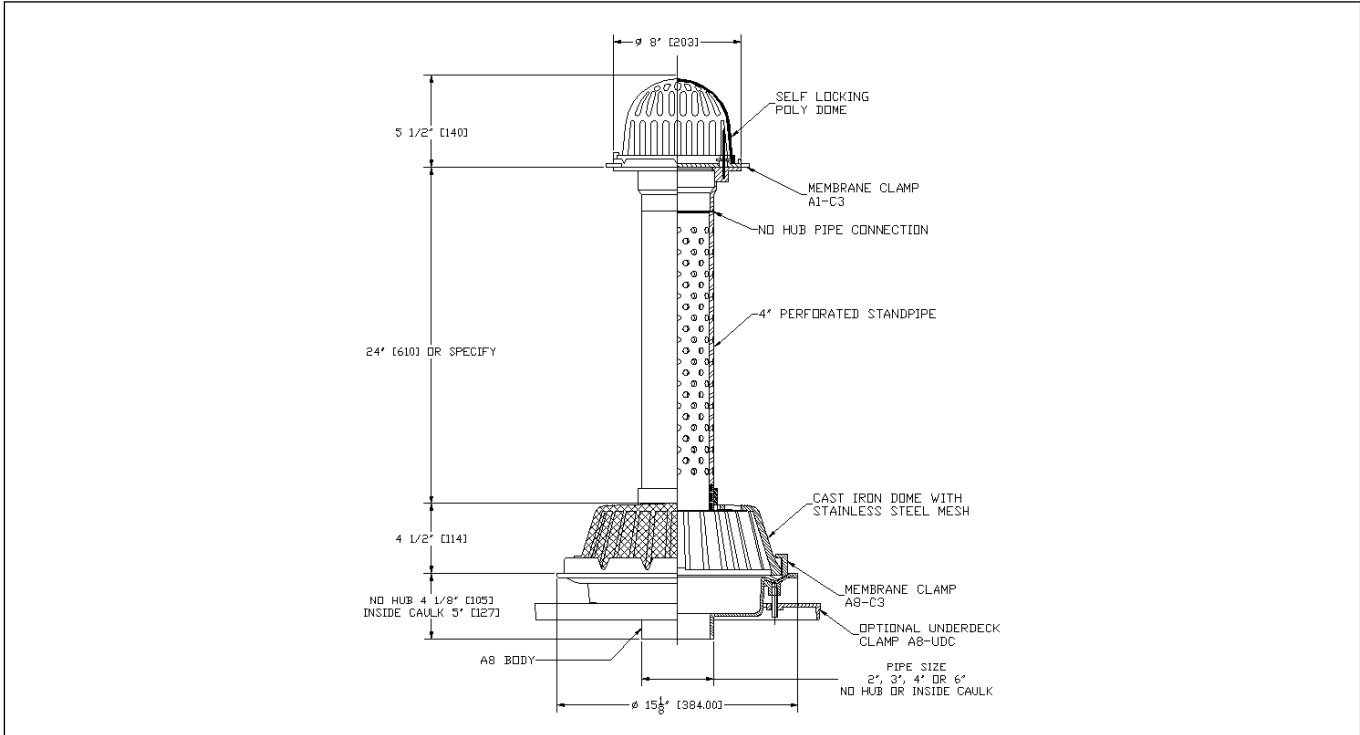
Location: _____



R1200-JD-W31P24L-R1104

LARGE GREEN ROOF DRAIN WITH PERFORATED PVC STANDPIPE, STAINLESS STEEL MESH COVERED CAST IRON DOME AND TOP POLY DOME STRAINER

Specification: MIFAB® Series R1200-JD-W31P24L-R1104 large green roof drain with 15" diameter, lacquered cast iron A8 body with combination membrane clamp and gravel guard with low silhouette cast iron, stainless steel mesh covered dome and 24" high perforated PVC standpipe with cast iron body and poly dome strainer on top.



PIPE SIZE	A8 BODY HEIGHT	
	NO HUB (STANDARD)	INSIDE CAULK (X)
2" (51)	4 1/8" (104)	5.05" (127)
3" (76)	4 1/8" (104)	5.05" (127)
4" (102)	4 1/8" (104)	5.05" (127)
5" (127)	4 1/8" (104)	5.05" (127)
6" (152)	4 1/8" (104)	5.05" (127)

MODEL NUMBER	PIPE SIZE
R1202,3,4-JD-W31P24L-R1104	2", 3", 4"
R1205,6-JD-W31P24L-R1104	5", 6"
R1208-JD-W31P24L-R1104	8"

Suffix	Description
-3	Perforated Stainless Steel standpipe (Type 304) - 24"
-6	Vandal proof dome
-11	Acid Resistant epoxy coated body, membrane clamp and dome
-12	Galvanized metal dome
-12A	Galvanized body and membrane clamp
-12B	Galvanized metal dome and membrane clamp
-13	Galvanized body, membrane clamp and dome
-28	Stainless steel body (Type 304) (2", 3", 4")
-81	Rough bronze dome (A2-MDL-81)
-83	Stainless steel mesh screen over metal dome (A2-SSD)
-84	Stainless Steel mesh screen around standpipe

-B	Sump receiver
-BA	Buy America Act compliant product
-E	Adjustable extension
-EG	Galvanized Adjustable extension
-G	Stainless steel ballast guard
-PA	Pennsylvania Steel Act compliant product
-P(*L)	(* indicates total custom length of PVC standpipe required)
-U	Underdeck clamp
-V	Fixed Static Extension 2", 3", 4"
-VG	Galvanized fixed extension (2",3",4")
-W1	Water proofing flange (A8-W-1)
X	Inside caulk outlet (2",3",4")
-Z	Extended wide elastomeric flange

CALIFORNIA PROPOSITION 65 WARNING. This product contains chemicals known to the State of California to cause cancer and birth defects or other reproductive harm.

Job Name: _____ Page No: _____
 Section No: _____ Contractor: _____
 Schedule No: _____ Purchase Order No: _____