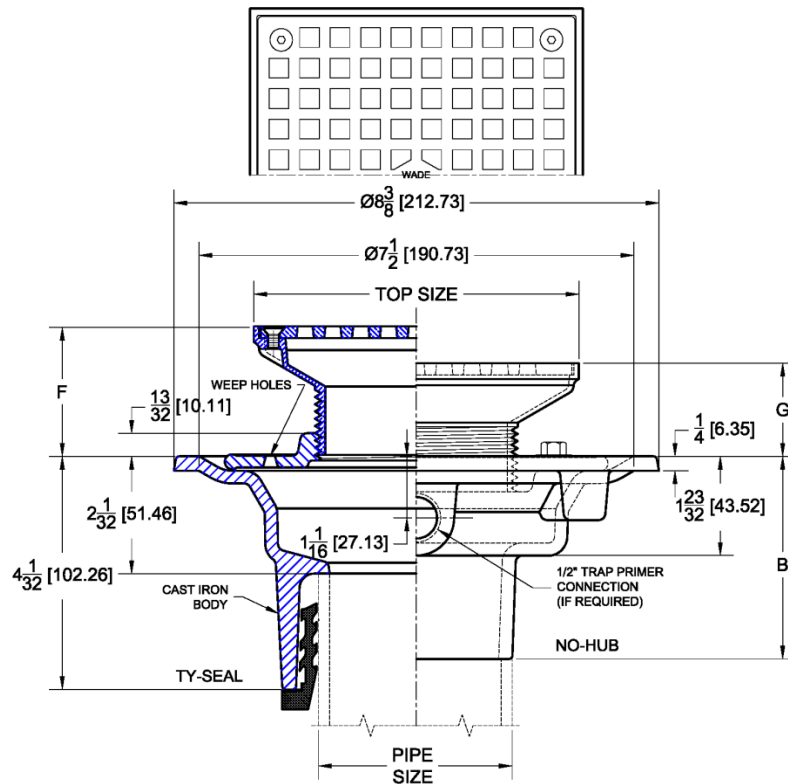


1100-G Floor Drain with Square Adjustable Top – Perforated Grate

Regularly Furnished: Painted cast iron floor drain body with anchor flange, seepage openings, reversible clamping collar, adjustable top, secured perforated grate, 1/2" NPT trap primer tap (plugged) and bottom outlet.

ASME Load Rating = L.D. (Light Duty) Under 2,000 Lbs.



Top Size	F		G	
	Min	Max	Min	Max
4 (102)	7/8 (22)	1-3/4 (44)	9/16 (14)	1-1/4 (32)
5 (127)	1-7/16 (37)	2-1/8 (54)	15/16 (24)	1-5/8 (41)
6 (152)	1-1/2 (38)	2-3/8 (60)	1 (25)	1-3/4 (44)
8 (203)	1-3/8 (35)	2-1/4 (57)	1 (25)	1-3/4 (44)

OUTLET	NO-HUB	INSIDE CAULK	THREADED
B	3 1/2 (88.9)	4 1/4 (107.9)	2 3/4 (69.9)

✓	Top Size & Type	Outlet Size In.	Grate Free Area (Sq.In.)
	G4	2,3,4,6	5.4
	G5	2,3,4,6	6.9
	G6	2,3,4,6	11.1
	G8	2,3,4,6	16.0

Top Material		
✓	Suffix	Description
	-1	Satin Finish Nickel Bronze
	-2	Satin Finish Bronze
	-85	Satin Finish 304 Stainless Steel
	-102	Polished Chrome Plated

Outlet Variations		
✓	Type	Designation
	No-Hub	2NH, 3NH, 4NH, 6NH
	Push-On	2TY, 3TY, 4TY
	Inside Caulk	2IC, 3IC, 4IC
	Threaded	2IPS, 3IPS, 4IPS

Funnels		
✓	Suffix	Description
	-EF4	4" Round Funnel Assembly
	-EF6	6" Round Funnel Assembly
	-EG8	8" Elongated Funnel Assembly

Options		
✓	Suffix	Description
	-ARC	Acid Resistant Coating (C.I. Parts)
	-DC	Debris Cover
	-DIA	Deck Installation Assembly
	-SO	90° Side Outlet (No-Hub Only)
	-TSD	Trap Seal Device (Model 4405)
	-8	Secondary Strainer
	-27	Sediment Bucket
	-31	Backwater Valve
	-33	Closure Plug
	-39	Galvanized Iron Parts
	-83	Special Engraving
	-94	Extension Adapter