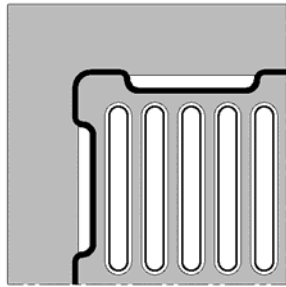
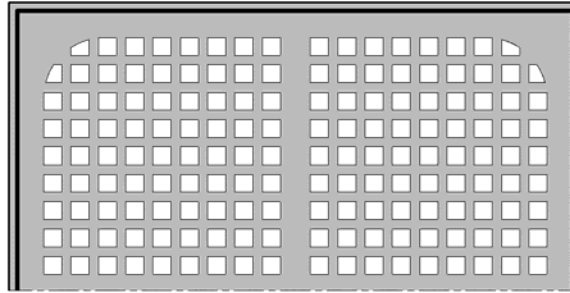


## 9130 12" Square, A.R.C. Floor Sink, 6" Sump Depth (Replaces 9130-LF)

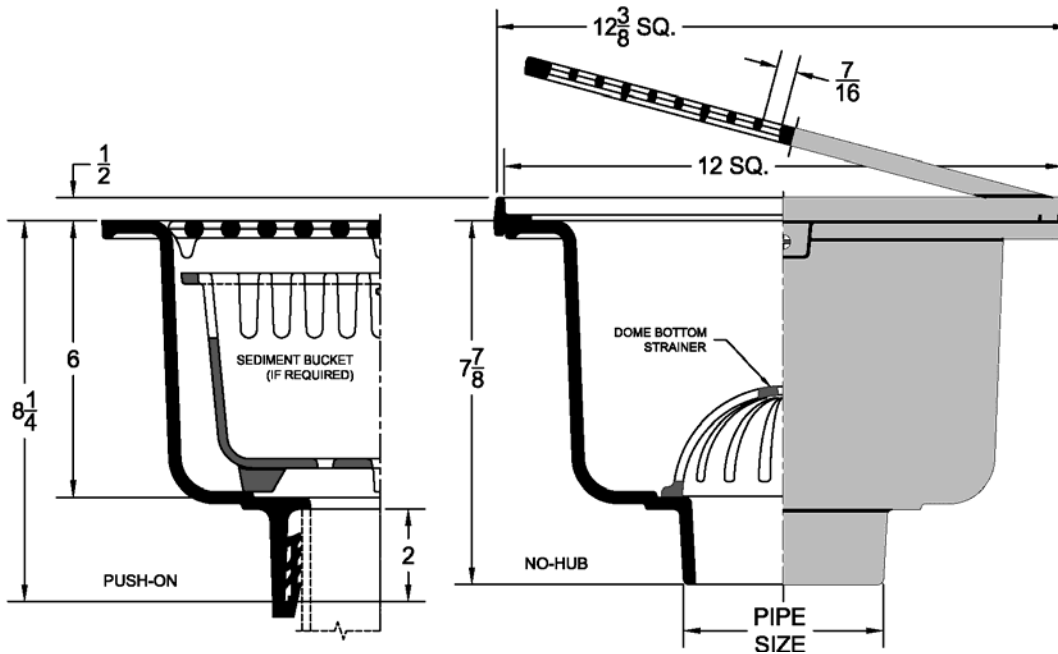
|         |          |            |
|---------|----------|------------|
| Project | Engineer | Mechanical |
|---------|----------|------------|



(64) A.R.E. GRATE



NICKEL BRONZE TOP



| 9130                      | -1  | -64  | -85   |
|---------------------------|---|--|---|
|                           | A.R.C. Cast Iron Body with Satin Finish Nickel Bronze Frame & Grate | A.R.C. Cast Iron Body & A.R.C. Cast Iron Grate | A.R.C. Cast Iron Body with Satin Finish Stainless Steel Frame & Grate |
| ●                         |   |  |   |
| Grate Free Area (Sq. In.) | 55.4  | 41.7   | 36.0  |

**Regularly Furnished:** Cast iron floor sink with A.R.C. interior, plastic interior dome strainer & full grate.

| Suffix Options |                                    |   |
|----------------|------------------------------------|---|
| Suffix         | Description                        | ● |
| -TSD           | Trap Seal Device (See Model 4405)  |   |
| -VP            | Vandal Proof Top Assembly          |   |
| -6             | 1/2" Trap Primer Connection        |   |
| -15            | 1/2 Grate                          |   |
| -16            | 3/4 Grate                          |   |
| -17            | Grate with Center Opening          |   |
| -18            | Solid Cover                        |   |
| -20            | Depressed Grate (-1 Only)          |   |
| -21            | Less Grate                         |   |
| -24            | Anchor Flange *                    |   |
| -26            | Anchor Flange w/ Clamping Collar * |   |
| -27            | Aluminum Sediment Bucket           |   |
| -48            | Aluminum Dome Strainer             |   |
| -107           | Angle Frame & Grate (-1 Only)      |   |
| -108           | Less Dome Bottom Strainer (Deduct) |   |
| -110           | A.R.C. Sediment Bucket             |   |
| -123           | Stainless Steel Bucket Liner       |   |

\*Dimensions vary from illustration

| Outlet Variations |             |   |
|-------------------|-------------|---|
| Type              | Designation | ● |
| Inside Caulk      | 2IC,3IC,4IC |   |
| No-Hub            | 2NH,3NH,4NH |   |
| Push On Gasket    | 2TY,3TY,4TY |   |

| Funnel Options |                               |   |
|----------------|-------------------------------|---|
| Suffix         | Description                   | ● |
| -EF4           | 4" Round Funnel Assembly *    |   |
| -EF6           | 6" Round Funnel Assembly*     |   |
| -EG6           | 6" Elongated Funnel Assembly* |   |
| -EG8           | 8" Elongated Funnel Assembly* |   |