

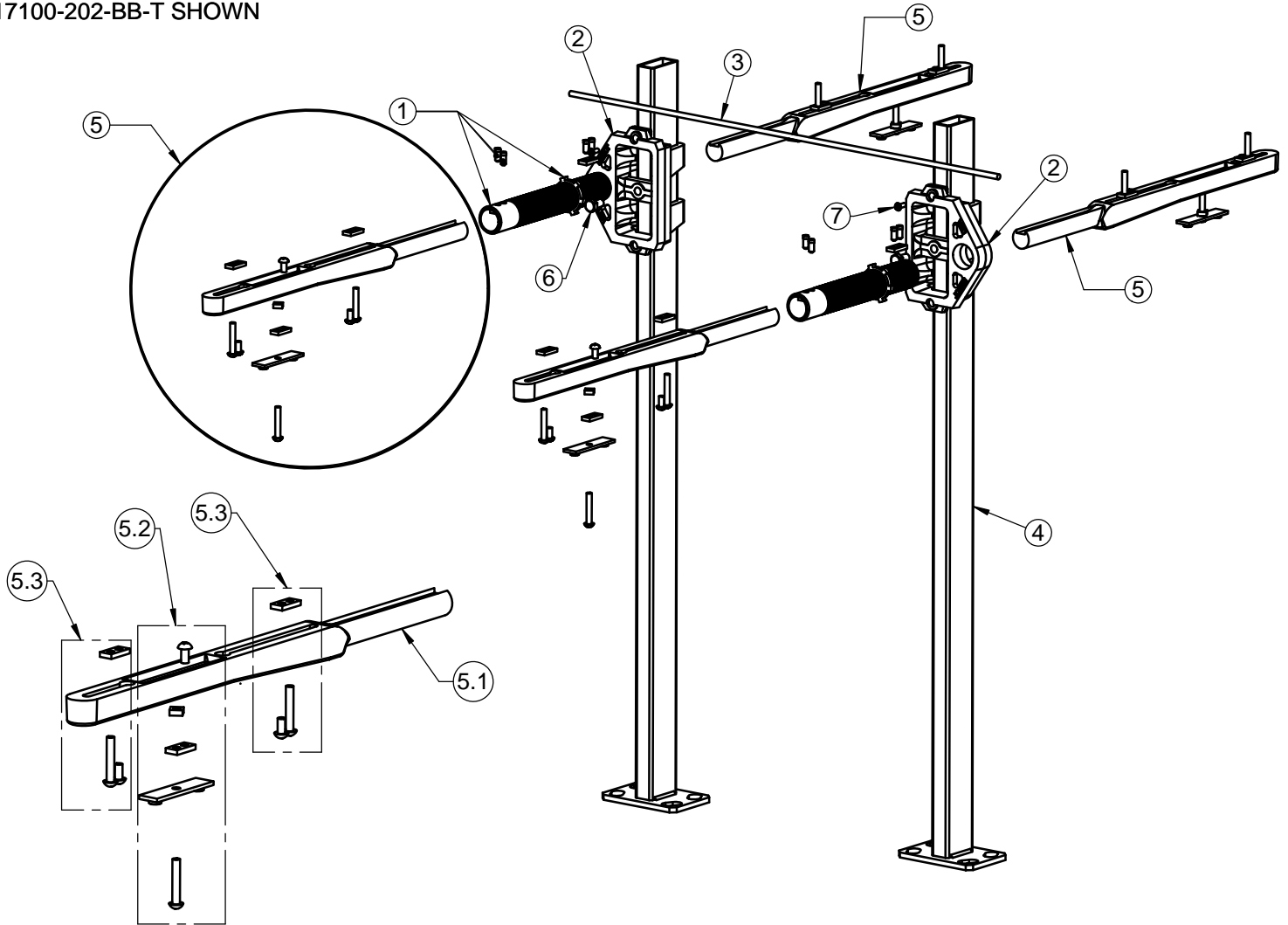
SPECIFICATION:

JOSAM SERIES 17100-BB REPLACEMENT PARTS GUIDE.

**FIXTURE CARRIER
REPLACEMENT PARTS**

SERIES **17100-202-BB**

17100-202-BB-T SHOWN



| POS. NO. | PART/ASSEMBLY NUMBER | DESCRIPTION | QTY REQ'D PER ASSY |
|----------|----------------------|---------------------------------------|--------------------|
| 1 | 566510-BB | 17100-BB 8-1/2" SLEEVE ASSY (EXAMPLE) | 2 |
| 2 | 171004202 | CI HEADER | 2 |
| 3 | 071781 | 1/4" X 26" TIE ROD | 1 |
| 4 | 500001 | 17100 UPRIGHT ASSEMBLY 1X2X36 WELDED | 2 |
| 5 | 566290 | 17100-202 ARM ASSEMBLY | 4 |
| 6 | H38167C58 | 3/8" x 5/8" HEX BOLT | 2 |
| 7 | H1024M057 | 10-24 x 9/16" FHMS | 2 |

POS. NO. 5 - 17100-202 ARM ASSEMBLY

| POS. NO. | PART/ASSEMBLY NUMBER | DESCRIPTION | QTY REQ'D PER ASSY |
|----------|----------------------|-----------------------------|--------------------|
| 5.1 | 071600 | 19-1/2" CONCEALED ARM | 1 |
| 5.2 | 566262 | 17100 FIXTURE LOCK ASSEMBLY | 1 |
| 5.3 | 566263 | 17100 LEVELING ASSEMBLY | 2 |

DATE OF LAST CHANGE: 03/19/19

DIMENSIONS ARE SUBJECT TO MANUFACTURERS TOLERANCES AND CHANGE WITHOUT NOTICE. WE CAN ASSUME NO RESPONSIBILITY FOR USE OF SUPERSEDED OR VOID DATA.



MICHIGAN CITY, INDIANA

NOTES