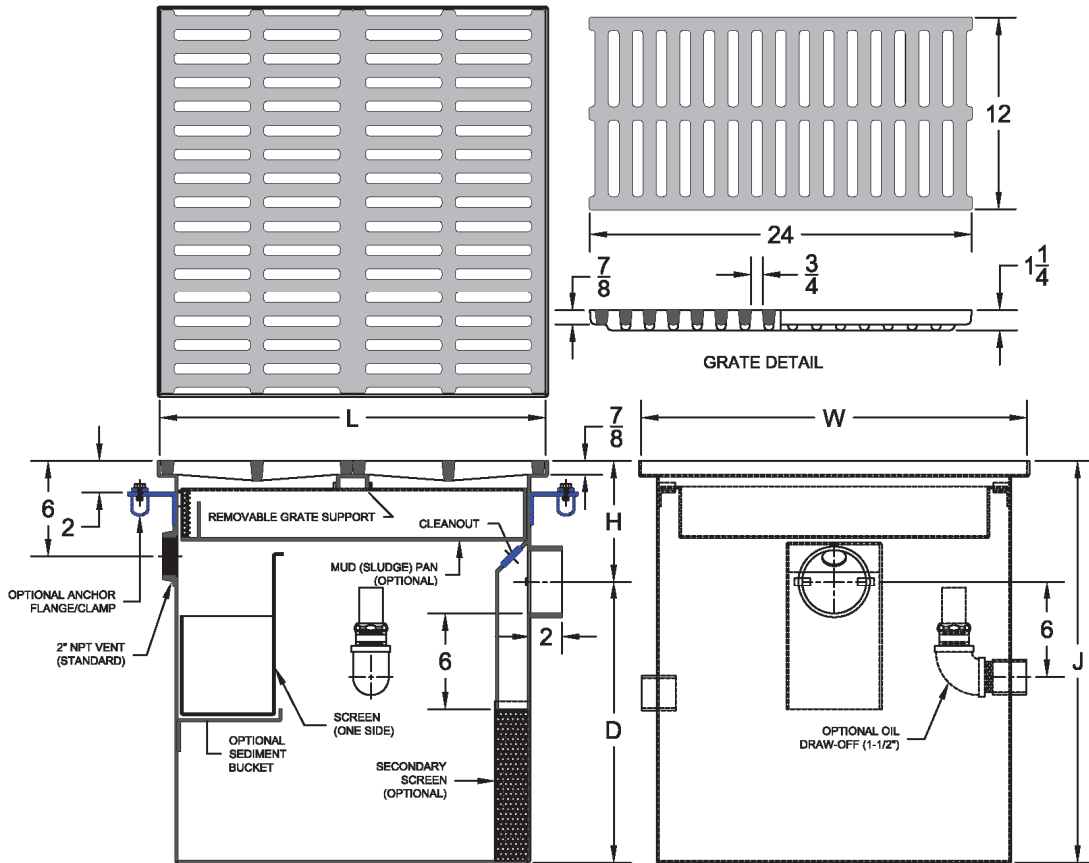


## 5800 Oil / Sediment Interceptor

|         |          |            |
|---------|----------|------------|
| Project | Engineer | Mechanical |
|---------|----------|------------|



| Sludge Capacity (Lbs) | Pipe Size | Capacity (Gal.) | Grate Qty | L      | W      | D      | H     | J   |
|-----------------------|-----------|-----------------|-----------|--------|--------|--------|-------|-----|
| 4                     | 3         | 4               | 1         | 12-1/2 | 12-1/2 | 10-1/2 | 4-1/2 | 215 |
| 12                    | 3         | 9               | 1         | 12-1/2 | 24-1/2 | 10-1/2 | 4-1/2 | 15  |
| 60                    | 4         | 35              | 2         | 24-1/2 | 24-1/2 | 18     | 11    | 29  |
| 65                    | 4         | 47              | 2         | 24-1/2 | 24-1/2 | 24     | 11    | 35  |
| 75                    | 4         | 60              | 2         | 24-1/2 | 24-1/2 | 30     | 11    | 41  |
| 80                    | 4         | 72              | 2         | 24-1/2 | 24-1/2 | 36     | 11    | 47  |
| 100                   | 4         | 67              | 3         | 36-5/8 | 24-1/2 | 22     | 11    | 33  |
| 200                   | 4         | 90              | 4         | 48-5/8 | 24-1/2 | 22     | 11    | 33  |
| 300                   | 4         | 189             | 8         | 48-5/8 | 48-5/8 | 22     | 11    | 33  |

| Size | Inlet / Outlet | • |
|------|----------------|---|
| 4    | 3IPS           |   |
| 12   | 3NH            |   |
| 60   | 4IPS<br>4NH    |   |
| 65   |                |   |
| 75   |                |   |
| 80   |                |   |
| 100  |                |   |
| 200  |                |   |
| 300  |                |   |

**Regularly Furnished:** Fabricated A.R.C. steel oil / sediment interceptor with heavy duty grate & integral trap with cleanout.

*\*Dimensions vary from illustration*

\*\*\* Sediment Package includes sediment bucket, mud pan and secondary screen.

| Suffix Options    |                                  |   |
|-------------------|----------------------------------|---|
| Suffix            | Description                      | • |
| -18               | Heavy Duty Solid Cover *         |   |
| -24               | Anchor Flange*                   |   |
| -27               | Sediment Bucket                  |   |
| -183              | Oil Draw Off Connection          |   |
| -256              | Secondary Screen Trap Guard      |   |
| -271              | Sediment Package ***             |   |
| -XT               | Fixed Extension (Specify Height) |   |
| Outlet Variations |                                  |   |
| -NH               | No-Hub                           |   |
| -IPS              | Female Threaded                  |   |