

BRASS 1 1/2" BATH WASTE ASSEMBLIES

SPECIFICATION

1½", 17 gauge, Brass Solder Kit includes overflow elbow, drain elbow, tee, piping, strainer, revolver overflow plate, stopper, gaskets & test capability. **Standard length assemblies** will include Overflow to Drain Tee piping that will adjust 12"-14" in length. **Extra Long length assemblies** will include Overflow to Drain Tee piping that will adjust from 19.5"-21.5" in length.

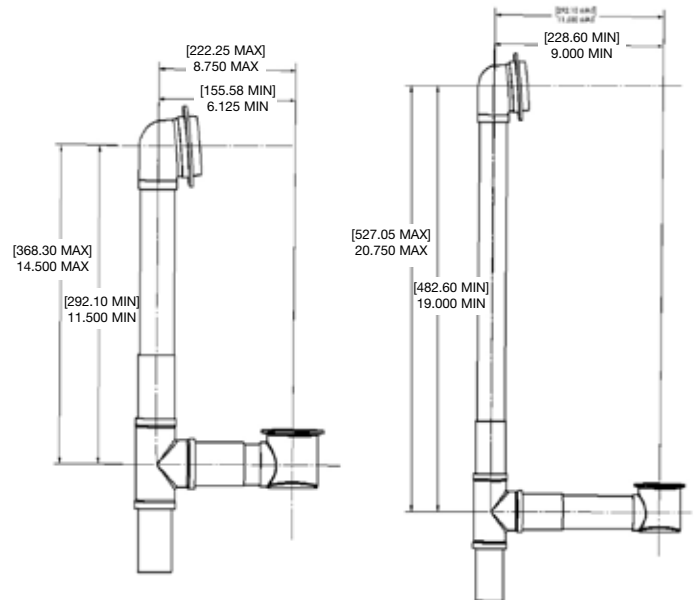
- 1½" brass tubular bath waste & overflow kits with solder joints
- 17 gauge brass tube
- Chrome or Satin Nickel finish
- Includes LSP's Revolver overflow test system and trim kit

DESIGN FEATURES

- Sweat connections made by installer eliminates need for access panel
- Revolver overflow system simplifies installation
- Available in standard length and extra long for deep tubs

COMPLIANCES/LISTINGS

- ASME A112.18.2/CSA B125.2 listed through IAPMO under file 1232



STANDARD

EXTRA LONG

PART NUMBER	DESCRIPTION	FINISH	MSTR CTN QTY
BRASS - LIFT & TURN			
RF-1154-CR	17 Ga. Solder Conn., Standard	Chrome Plated	8
RF-1154-SN	17 Ga. Solder Conn., Standard	Satin Nickel Plated	8
RF-1155-CR	17 Ga. Solder Conn., Extra Long	Chrome Plated	8
RF-1155-SN	17 Ga. Solder Conn., Extra Long	Satin Nickel Plated	8
BRASS - TOE TOUCH			
RF-1164-CR	17 Ga. Solder Conn., Standard	Chrome Plated	8
RF-1165-CR	17 Ga. Solder Conn., Extra Long	Chrome Plated	8

Product Submittal	
Job Name:	Date:
Part Number:	Quantity:
Architect:	
Contractor:	

Content matter is subject to change at any time. It is the user's responsibility to ensure the most updated revisions are obtained. 3/2021