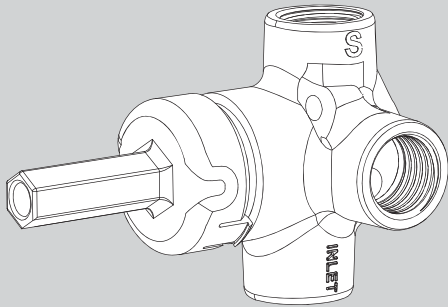
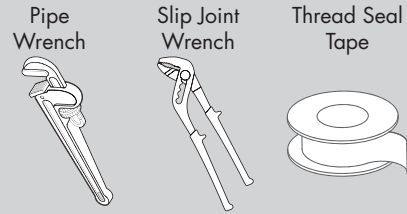


INSTRUCTIONS FOR MODELS

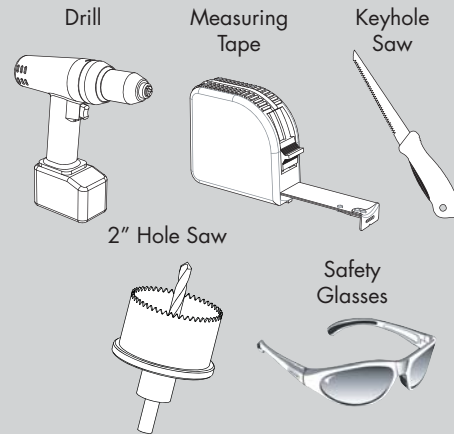
CPV-TV



TOOLS AND SUPPLIES



HELPFUL TOOLS & SUPPLIES:



IMPORTANT

- Do not over tighten any connections or damage may occur.
- Be sure to read instructions thoroughly before beginning installation.
- This transfer valve has an operating range of 20-80 psi.

SAFETY TIPS

Cover your drain to prevent loss of parts. Be sure to wear eye protection while cutting pipe.

MAINTENANCE

Your new Transfer Valve is designed for years of trouble-free performance. The diverter cartridge has a ceramic disc construction and requires no maintenance.

WARRANTY

Additional warranty information can be found at: www.speakman.com

NEED HELP?

For additional assistance or service please contact:

SPEAKMAN® Company
400 Anchor Mill Road
New Castle, DE 19720

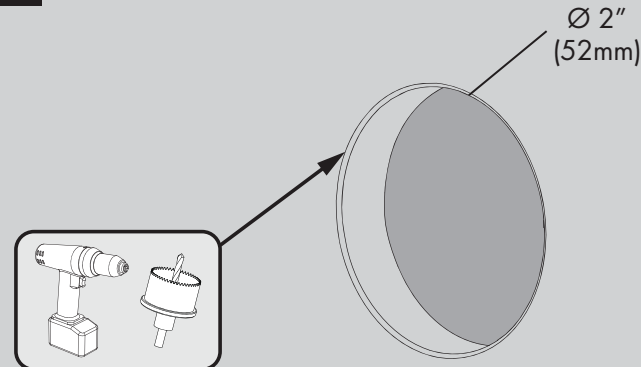
800-537-2107

customerservice@speakman.com

www.speakman.com

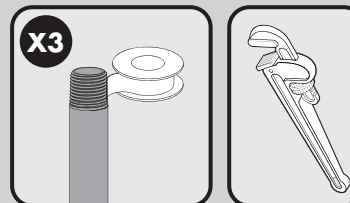
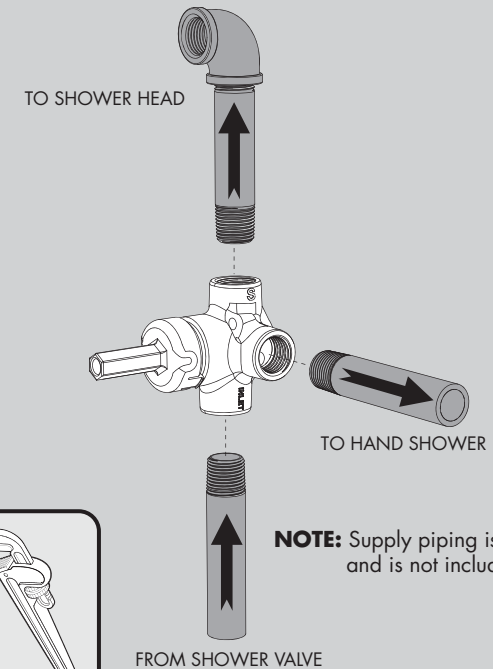
92-CPV-TV-01

1 Determine placement of CPV-TV. Create a 2" (52mm) valve access hole in the finished wall.

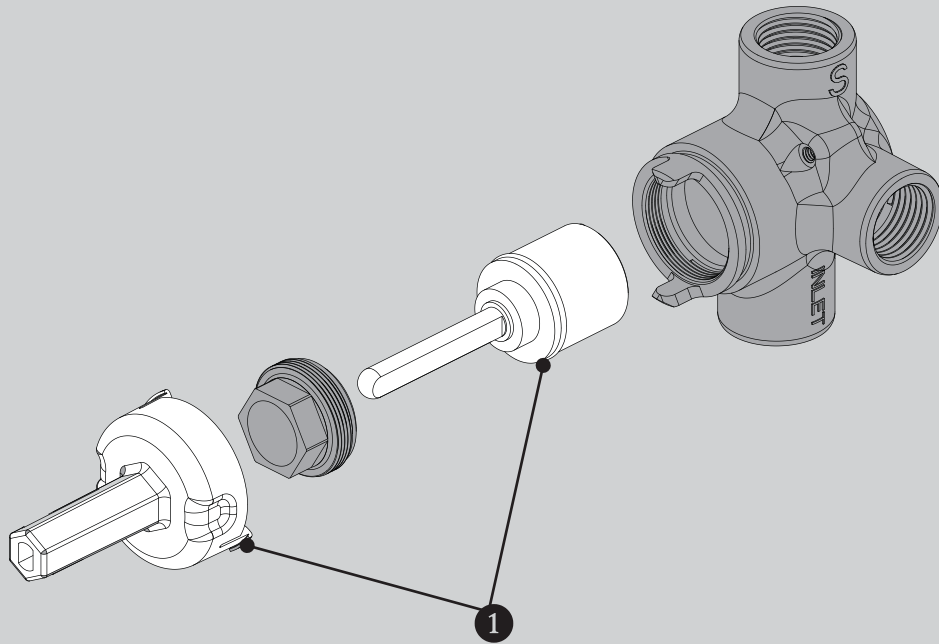


2 SUPPLY CONNECTION LAYOUT

Shut off water supplies. Position the Transfer Valve correctly in the wall with the outlet port marked "S" facing up as shown below. See the Rough-In Diagram for proper positioning. Wrap Thread Seal Tape around all pipe threads in a clockwise direction. Make connections to the Transfer Valve and wrench tighten. Properly secure piping to surrounding structure.



NOTE: Supply piping is shown for reference and is not included.



ITEM NO.	PART NO.	DESCRIPTION
1	RPG05-0949	DIVERTER CARTRIDGE WITH SPINDLE ADAPTER

NOTES:

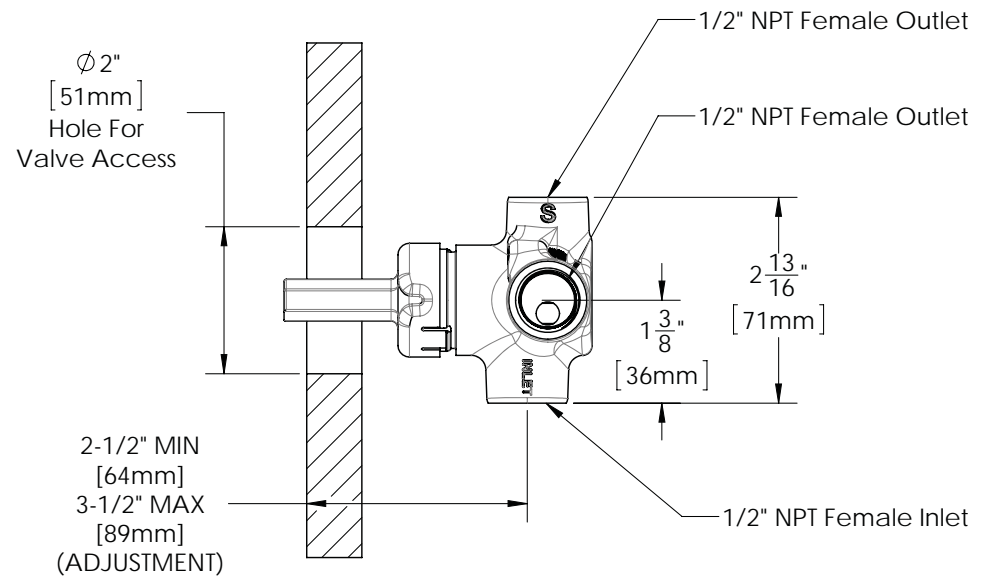
COMPLIANCE:

ASME A112.18.1/CSA B125.1

CONNECTIONS:

- Inlet: 1/2" NPT Female
- Outlets: 1/2" NPT Female

Contractor to supply necessary inlet connections.



DIMENSIONS SUBJECT TO CHANGE WITHOUT NOTICE.