



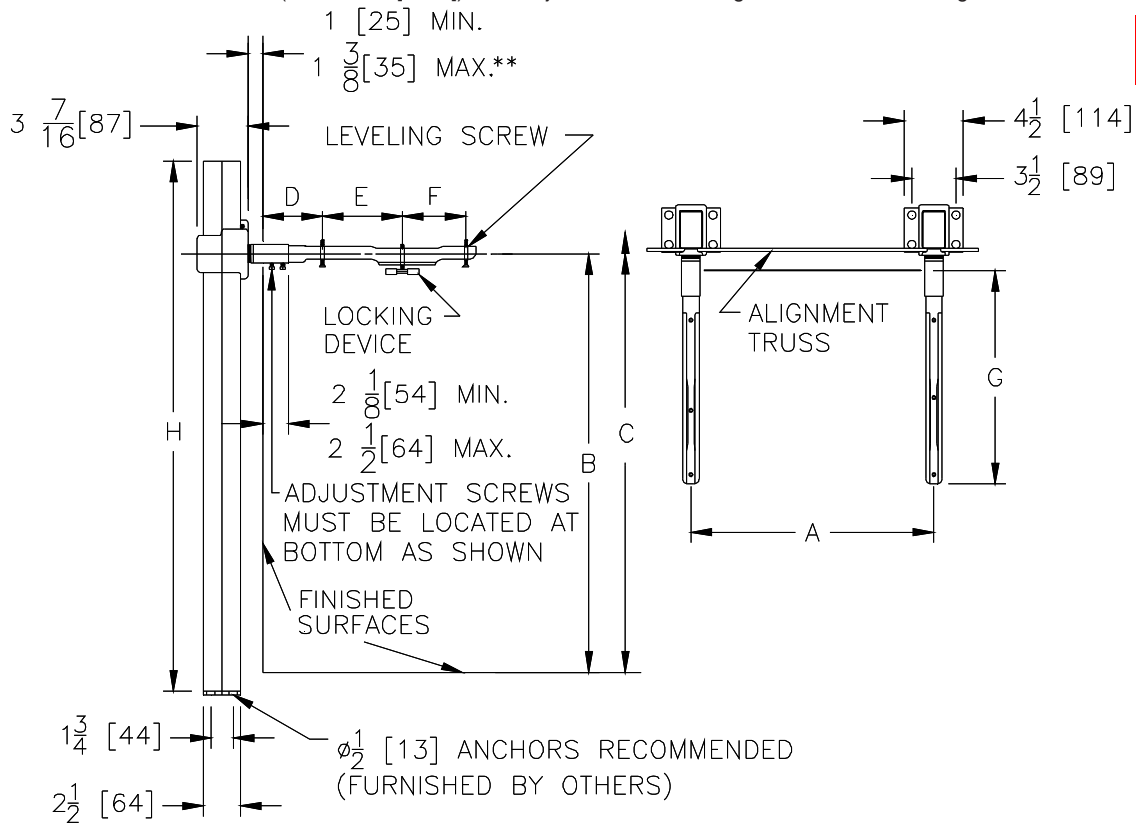
# Z1231

## CONCEALED ARM SYSTEM WALL LAVATORIES

SPECIFICATION SHEET

TAG \_\_\_\_\_

Dimensional Data (inches and [ mm ]) are Subject to Manufacturing Tolerances and Change Without Notice



\*\* WITH STANDARD SLEEVE LENGTH OF 4 [102]

Product No.	Approx. Wt. Lbs. [kg]
Z1231	45 [20]

**ENGINEERING SPECIFICATION:** ZURN Z1231 Lavatory support system with concealed arms. Complete with Dura-Coated rectangular steel uprights with welded feet, cast iron adjustable headers, concealed arms, steel sleeves, alignment truss, and mounting fasteners.

**OPTIONS** (Check/specify appropriate options)

**PREFIXES**

**Z** Dura-Coated System with Concealed Arms\*

**SUFFIXES**

- \_\_\_ -AL Adapter Lug
- \_\_\_ -CB Carrier Bank
- \_\_\_ -CU Floor to Ceiling Upright (Specify Height Required)
- \_\_\_ -D Back to Back System
- \_\_\_ -E2 Concealed Arm Escutcheons 2 [51] Long
- \_\_\_ -E4 Concealed Arm Escutcheons 4 [102] Long
- \_\_\_ -E6 Concealed Arm Escutcheons 6 [152] Long
- \_\_\_ -SL Sleeve Length Over 4 [102] (Specify Length)
- \_\_\_ -WS Wall Support Valve Plate (Specify Valve Name and Number)
- \_\_\_ -79 Paraplegic Rough-in

Note: Dimensional data for letter dimensions depends upon fixture type and manufacturer. See Zurn Carrier/Fixture Rough-In information at [www.zurn.com](http://www.zurn.com) for specific rough-in dimensions

\*REGULARLY FURNISHED UNLESS OTHERWISE SPECIFIED

REV. I	DATE: 11/29/10	C.N. NO. 120530
DWG. NO. 58855	PRODUCT NO. Z1231	