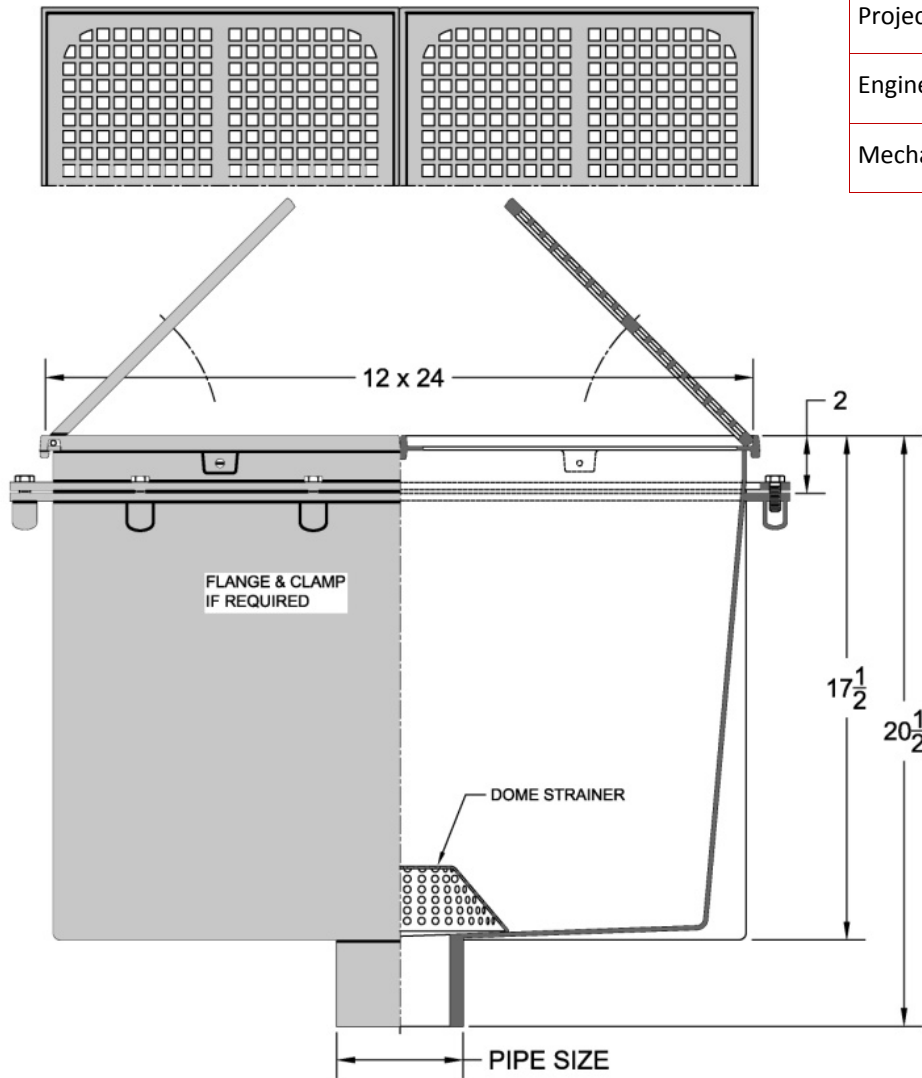
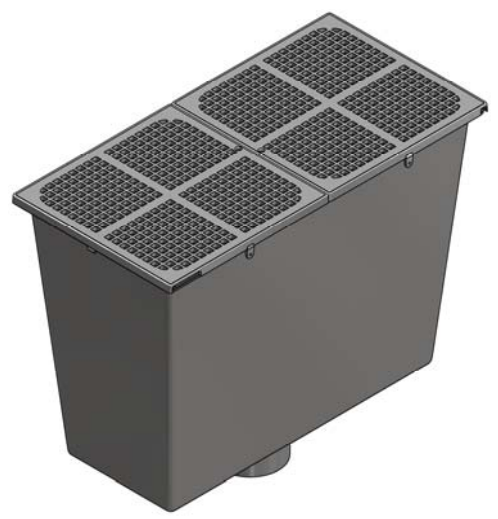


## 9290 12" X 24" Rectangular, A.R.C. Floor Sink, 8" Sump Depth



Project	
Engineer	
Mechanical	



\*Dimensions vary from illustration

9290	-1	-64	-85
	A.R.C. Steel Body with Satin Finish Nickel Bronze Frame & Hinged Grate	A.R.C. Steel Body & A.R.C. Steel Grate	A.R.C. Steel Body & Stainless Steel Grate
Grate Free Area (Sq. In.)	110.8	83.4	72.0

**Regularly Furnished:** Fabricated steel floor sink with A.R.C. interior, integral flange, interior dome strainer & dual hinged grates.

Outlet Variations		
Type	Designation	●
No-Hub	3NH,4NH,6NH	

Funnel Options		
Suffix	Description	●
-EF4	4" Round Funnel Assembly *	
-EF6	6" Round Funnel Assembly*	
-EG6	6" Elongated Funnel Assembly*	
-EG8	8" Elongated Funnel Assembly*	

Suffix Options		
Suffix	Description	●
-VP	Vandal Proof Top Assembly	
-6	1/2" Trap Primer Connection	
-15	1/2 Grate	
-16	3/4 Grate	
-17	Grate with Center Opening	
-18	Solid Cover	
-21	Less Grates	
-24	Anchor Flange	
-26	Anchor Flange w/ Clamping Collar	
-27	Sediment Bucket	
-20	Less Dome Bottom Strainer (Deduct)	
-110	A.R.C. Sediment Bucket	
-111	A.R.C. Dome Bottom Strainer	
-123	Stainless Steel Bucket Liner	