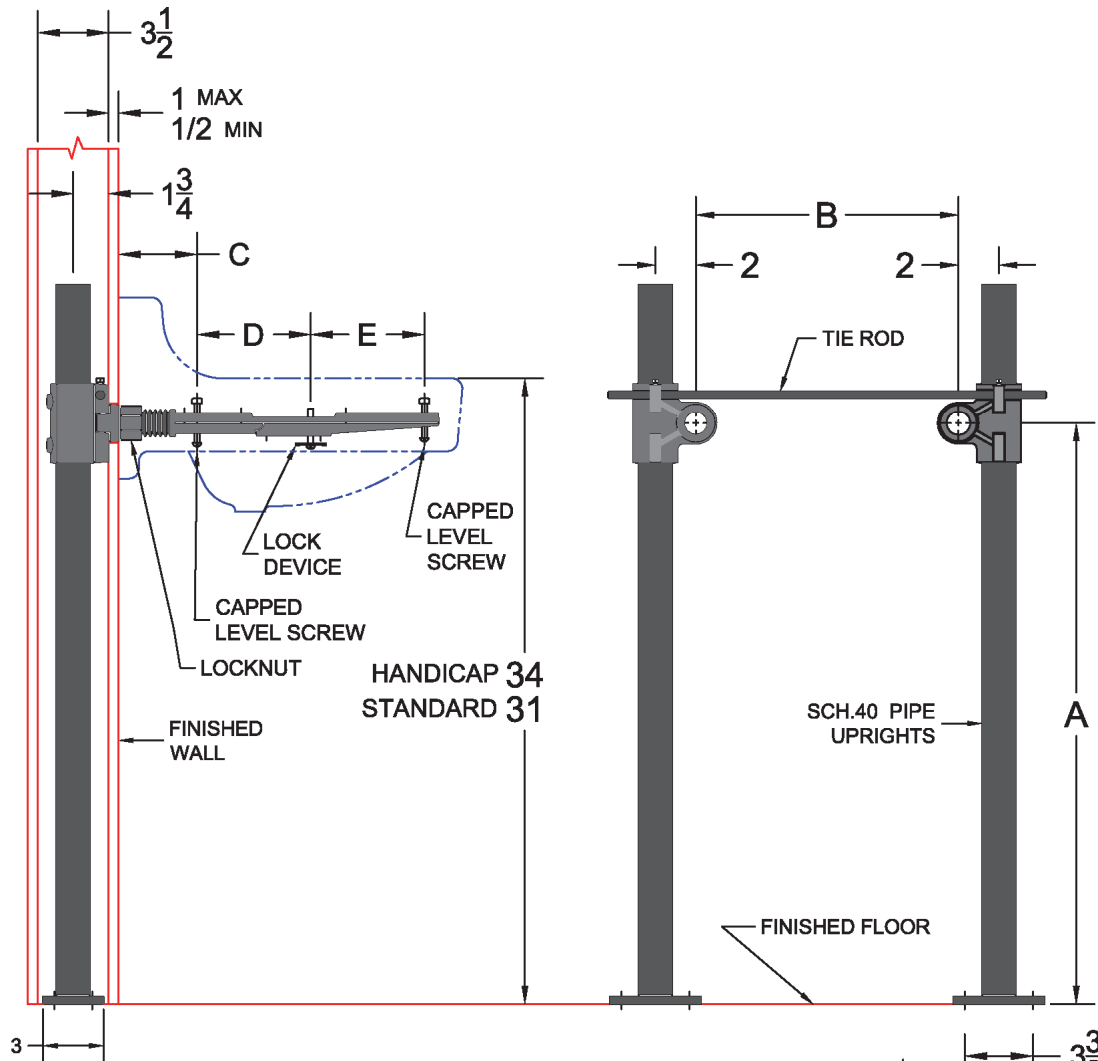


530 Lavatory Carrier (Concealed Arms)

Project	Engineer	Mechanical
---------	----------	------------

Conforms to ASME A112.6.1M Type II Lavatory Carrier—Max Load Test 250 Lbs.



NOTE: HEADER COUPLINGS MAY BE REVERSED AND LOCATED OUTSIDE THE PIPE UPRIGHTS FOR WIDER ROUGH-IN DIMENSIONS. LETTER DIMENSIONS VARY ACCORDING TO FIXTURE USED.

Model	•
530	

Regularly Furnished: Single lavatory carrier with round uprights, rectangular base feet, cast iron concealed arms & non-slip locking devices.

Suffix Options		
Suffix	Description	•
-AM27	Valve Support on Upright *(Specify Valve)	
-M4	Extended Wall Nipples (Per Inch)	
-M18	Extra Long Uprights*	
-M24	Wheelchair Lavatory installation *	
-M25	Longer Rear Leveling Screws (High Back Lav)	
-SC43	Shroud Support	

*Dimensions vary from illustration