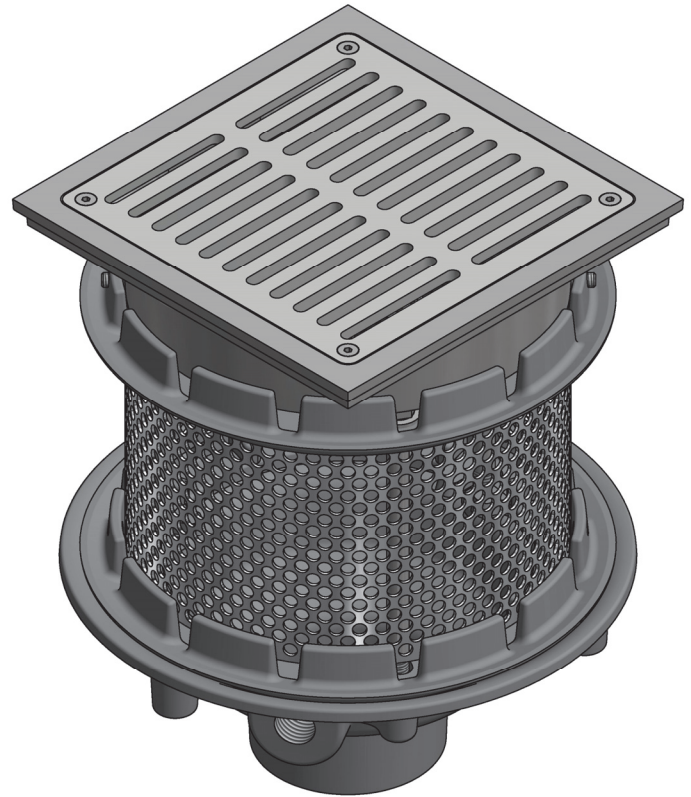
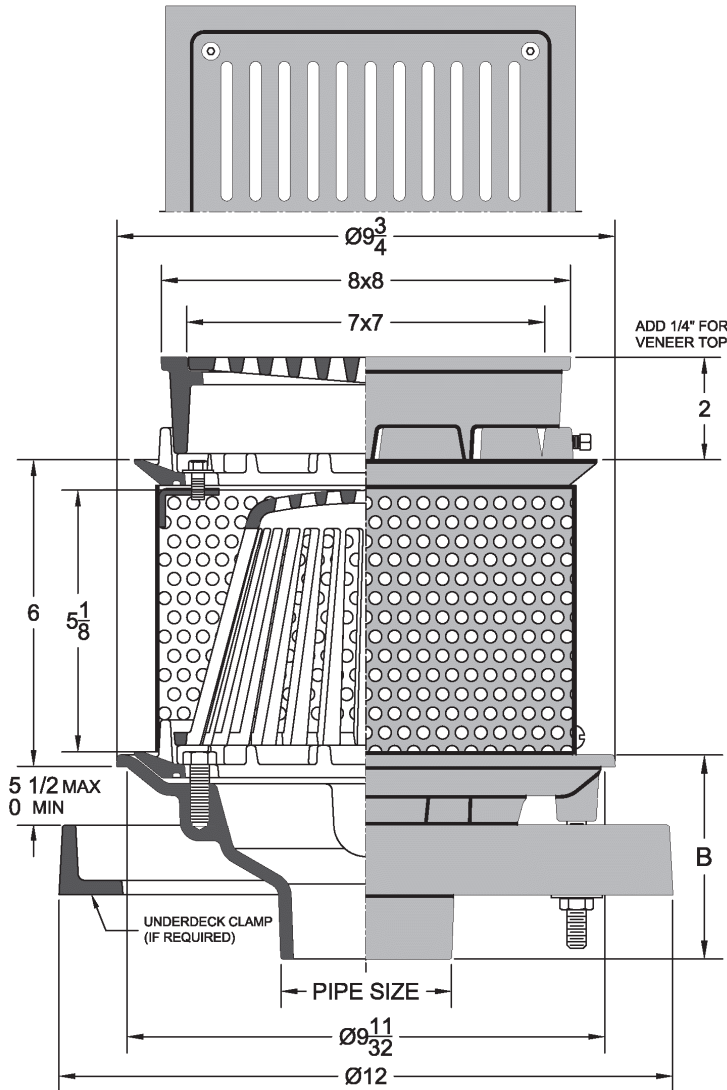


## 3358 Promenade Area Green Roof Drain

Project	Engineer	Mechanical
---------	----------	------------



3358-12-3NH

Outlet	No-Hub	Push-On	Inside Caulk	Threaded
B	4	4-1/4	4-3/4	3-1/4

3358	-1 Cast Iron Body with Satin Finish Nickel Bronze Top	-2 Cast Iron Body with Satin Finish Bronze Top	-12 Cast Iron Body with Ductile Iron Top	Grate Free Area (Sq.In.)
•				14.8

Suffix Options		
Suffix	Description	•
-ARC	Acid Resistant Coating	
-E	Elastomeric Flange*	
-SO	90 Degree Side Outlet (2NH,3NH,4NH)	
-39	Galvanized Cast Iron	
-40	Galvanized Iron Top	
-46	Aluminum Dome	
-52	Sump Receiver*	
-53	Under-Deck Clamp*	
-189	Bearing Pan w/ Clips & Securing Hardware*	

**Regularly Furnished:** Cast iron green roof drain with flange, flashing ring, gravel stop, stainless steel perforated extension, square promenade top and bottom outlet.

\*Dimensions vary from illustration

Optional Extensions			
Suffix	Description		•
-DF	Fixed Extension (2" High)* For Each Additional 1" (Add / In.)	Painted	
		-39 Galv	
-EB	Adjustable Drain Extension Pan*	Painted	
		-39 Galv	

Outlet Variations		
Type	Designation	•
Inside Caulk	2IC,3IC,4IC	
No-Hub	2NH,3NH,4NH	
	6NH	
Push On Gasket	2TY,3TY,4TY	
Threaded	2IPS,3IPS,4IPS	