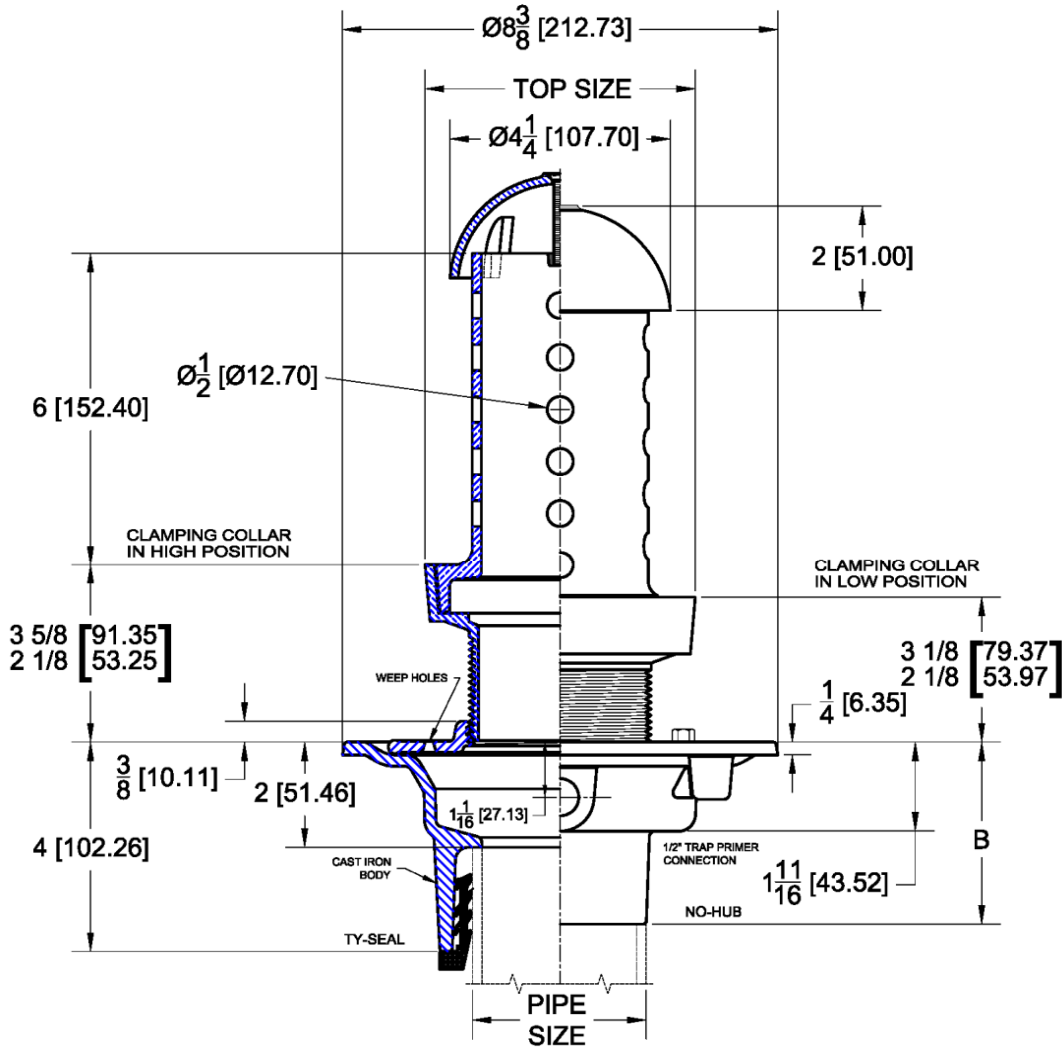


1860 Planting Area Drain with Adjustable Top – Perforated Standpipe

Regularly Furnished: Painted cast iron planting area drain with flange, reversible clamping collar, seepage openings, 1/2" NPT threaded trap prime tap (plugged), adjustable shank, perforated standpipe, secured dome and bottom outlet .



OUTLET	NO-HUB	INSIDE CAULK	THREADED
B	3 1/2 (89)	4 1/4 (108)	2 3/4 (70)

Top Material		
✓	Suffix	Description
	-1	Satin Finish Nickel Bronze
	-2	Satin Finish Bronze
	-102	Polished Chrome Plated Bronze

Outlet Variations		
✓	Type	Designation
	No-Hub	2NH, 3NH, 4NH, 6NH
	Push On	2TY, 3TY, 4TY
	Inside Caulk	2IC, 3IC, 4IC
	Threaded	2IPS, 3IPS, 4IPS

Options		
✓	Suffix	Description
	-ARC	Acid Resistant Coating
	-DIA	Deck Installation Assembly
	-SO	90 Deg. Threaded Side Outlet
	-TSD	Trap Seal Device (4405)
	-39	Galvanized Iron Parts
	-53	Under Deck Clamp
	-56	Longer Standpipe (Specify Length)
	-57	Solid Standpipe (Less Perforations)
	-94	Extension Adapter
	-126	Stainless Steel Mesh Screen Over Standpipe