

**A191W Series**  
**Barrier-Free, Wall Mounted Hand Washing Station**



A191400W SHOWN

**TECHNICAL ASSISTANCE TOLL FREE TELEPHONE NUMBER:**  
**1.800.591.9360**

Technical Assistance Fax: 1.626.855.4894

**NOTES TO INSTALLER:**

1. Please leave this documentation with the owner of the fixture when finished.
2. Please read this entire booklet before beginning the installation.
3. Check your installation for compliance with plumbing, electrical and other applicable codes.

**LIMITED WARRANTY - UNITED STATES & CANADA**

Murdock warrants that its products are free from defects in material or workmanship under normal use and service for a period of one year from date of shipment from the factory. Murdock's liability under this warranty shall be discharged solely by repair or replacement of defective material, provided Murdock is notified in writing within the time periods described above.

This warranty does not cover installation or labor charges and does not apply to materials, which have been damaged by other causes such as mishandling or improper care or abnormal use. The repair or replacement of the defective materials shall constitute the sole remedy of the Buyer and the sole remedy of Murdock under this warranty. Murdock shall not be liable under any circumstances for incidental, consequential or direct charges caused by defects in the materials, or any delay in the repair or replacement thereof. This warranty is in lieu of all other warranties expressed or implied. Product maintenance instructions are issued with each unit and disregard or non-compliance with these instructions will constitute an abnormal use condition and void the warranty. Stainless steel must be protected on jobsite during construction and must be properly maintained after the water has been introduced into the water cooler or drinking fountain, or Murdock's limited warranty is void.

LIMITED EXPORT WARRANTY - One year on parts only.

Murdock™ assumes no responsibility for use of void or superseded data. © Copyright Murdock Mfg., City of Industry, CA Member of Morris Group International. Please visit [www.murdockmfg.com](http://www.murdockmfg.com) for most current specifications.

7020-999-001 Date: 04/12/21

COMPLIES WITH  
**STANDARDS**



Test rating conditions are compliant with ARI 1010.

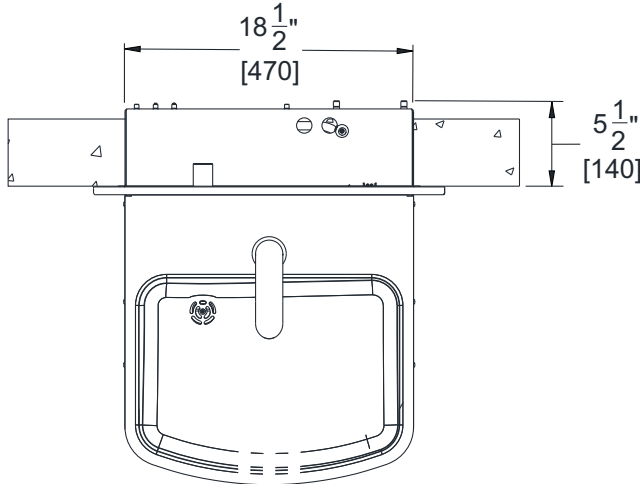
Member of  
  
MORRIS GROUP  
INTERNATIONAL

**murdock**<sup>®</sup>  
SINCE 1853

15125 Proctor Ave, City of Industry,  
CA, 91746 U.S.A.  
Phone 800-591-9360  
626-336-4561  
Fax 626-855-4894  
[www.murdockmfg.com](http://www.murdockmfg.com)

**TECHNICAL DETAIL**

TOP VIEW



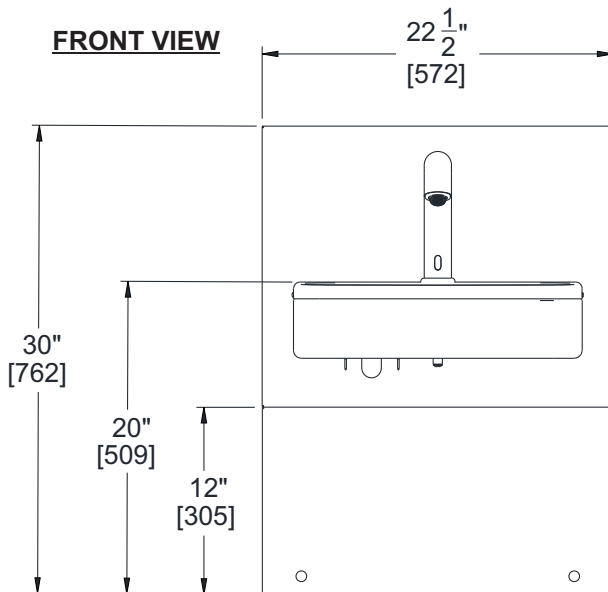
**Deluxe Wash-N-Go!**<sup>™</sup>

**MODEL A191400W**

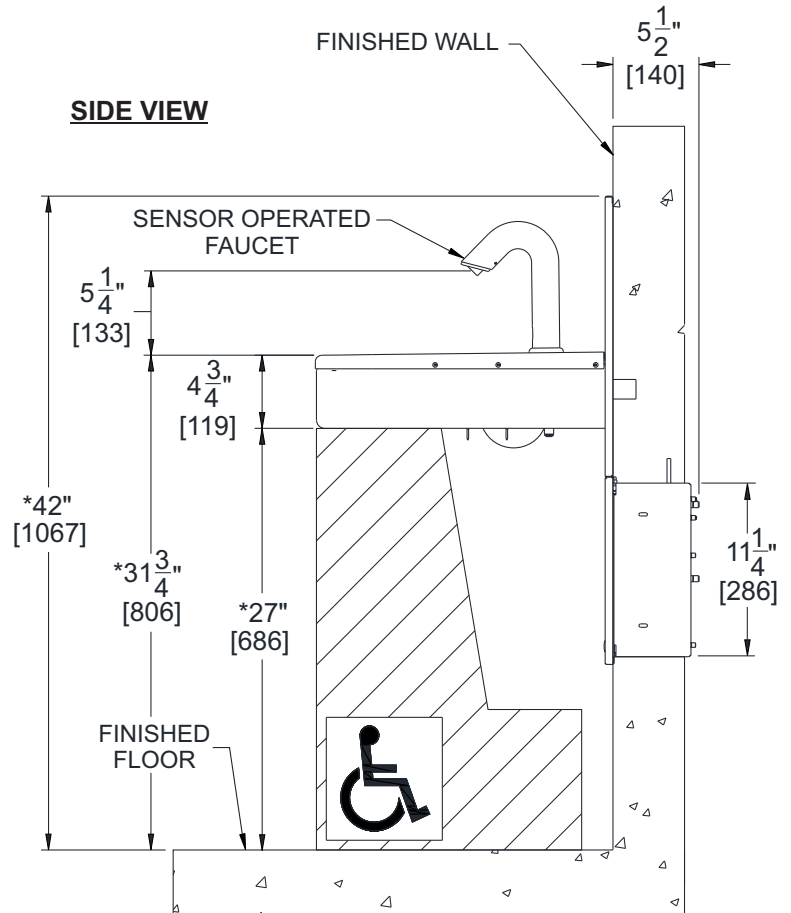
**BARRIER FREE, WALL MOUNTED  
HAND WASHING STATION**

\* Valve specifications:  
Minimum/Maximum Pressure  
30 to 100 PSI.

FRONT VIEW



SIDE VIEW



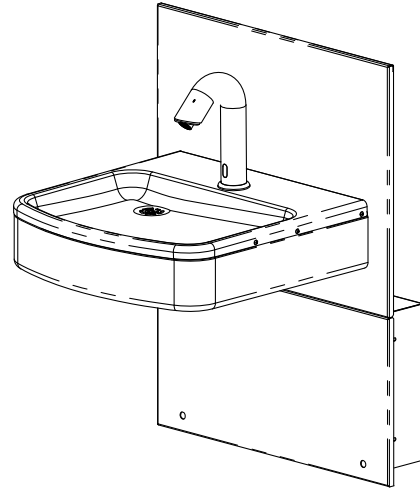
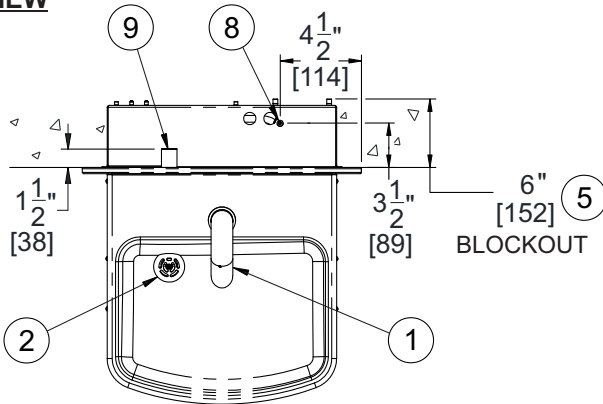
**GENERAL NOTES:**

1. ALL DIMENSIONS ARE IN INCHES [mm]
2. \*DIMENSIONS SHOWN ARE FOR RECOMMENDED ADULT HEIGHT. ADJUST VERTICAL DIMENSIONS AS NECESSARY TO COMPLY WITH FEDERAL, STATE & LOCAL CODES.

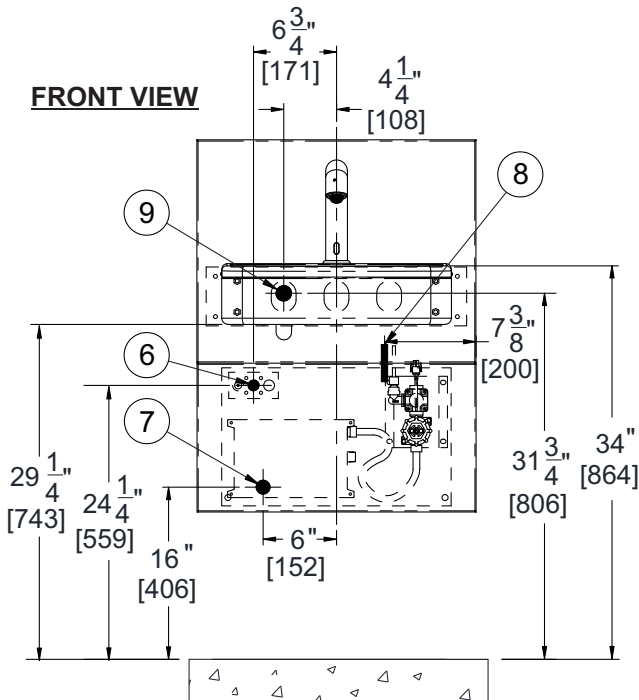
## ROUGHING-IN AND DIMENSIONAL DRAWING

(\*Consult with local, state, and federal codes for proper mounting height prior to roughing-in.)

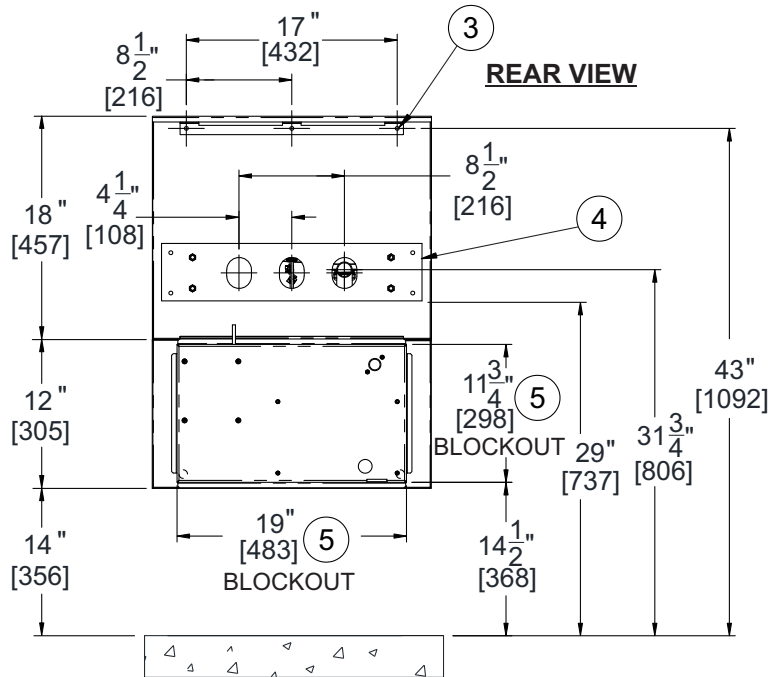
### TOP VIEW



### FRONT VIEW



### REAR VIEW



### GENERAL NOTES:

1. J-SPOUT, SENSOR OPERATED FAUCET
2. Ø1-1/4" DRAIN OPENING
3. HANGER BRACKET PLATE
4. MOUNTING PLATE
5. BLOCKOUT DIMENSIONS

### ROUGH-IN PLUMBING AND MOUNTING NOTES

6. PLUG-IN 120VAC TO 9VDC TRANSFORMER
7. ELECTRICAL LINES FOR HOT WATER HEATER
8. 1/2" NPS HOSE CONNECTIONS
9. 1-1/4" OD WASTE OUTLET CONNECTION

### NOTES:

- A - ALL DIMENSIONS ARE IN INCHES [mm]  
 B - \*DIMENSIONS SHOWN ARE FOR RECOMMENDED ADULT HEIGHT. ADJUST VERTICAL DIMENSIONS AS NECESSARY TO COMPLY WITH FEDERAL, STATE & LOCAL CODES.

## A191W HAND WASH

### **PRIOR TO INSTALLATION:**

Important: some options may slightly alter installation. To ensure proper installation review the manual thoroughly and verify rough-ins before beginning work. File this manual with the owner or maintenance personnel upon completion of installation.

- Fixture mounting requirements: industry standard wall construction, adequate to support the fixture and installer provided wall anchors sufficient to secure the fixture.
- Inspect fixture and all parts for damages.

### **IMPORTANT:**

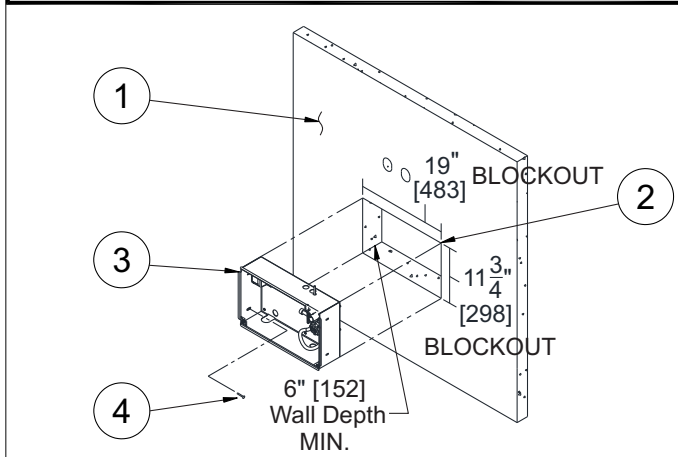
1. Waste P-Trap, Water Supply Service Angle Stop Valve and 2" x 4" Electrical Plug-In Receptacle to be supplied by others in accordance with local codes. A P-Trap (by others) must be used for the drain connection.
2. Water supply is 1/2" NPS Female. Water supply inlet will accommodate 1/2" NPT Male adapter
3. Waste is 1-1/4" O.D. Tailpiece.
4. Completely flush supply lines of all foreign debris before connecting to fixture.
5. **Warranty is voided** if installation is not made following current Murdock Mfg. installation instructions and if components are assembled to the fixture that is not approved by Murdock Mfg.
6. Fixture operates within water pressure range of 30 to 100 PSIG (207 to 290 kPa). Murdock Mfg. will not warranty fixtures damaged when connected to supply lines with flow pressure lower than 30 PSIG (207 kPa) or higher than 100 PSIG (290 kPa). A pressure regulator must be furnished by others on supply line if inlet pressure is greater than 100 PSIG (290 kPa).
7. **Per UPC 609.10-** *All building water supply systems in which quick acting valves are installed shall be provided with devices to absorb the hammer caused by high pressure resulting from the quick closing of the valve. These pressure-absorbing devices shall be approved mechanical devices. Water pressure-absorbing devices will be installed as close as possible to the quick closing valve.*

### **INSTALLATION:**

1. Create sufficient Blockout Area for Valve Box / Heater Enclosure according to Rough-In and Dimensional Drawing.
2. Mount Hanger Bracket and Wall Mounting Plate to wall horizontally level as shown in Roughin-In and Dimensional Drawing.  
**NOTE:** Adjust height of bracket if deck (rim) height is required to differ from dimensions shown.  
**WARNING:** Hanger Bracket and Wall Mounting Plate **MUST** be securely anchored to wall with fasteners sufficient to support a minimum pull-out rating of 1000lbs (454kg). **If wall can not provide adequate support, order and install a fixture support carrier.**
3. Remove the Lower Trim Panel from the Hand-Washing Station and set aside in a safe place. Save the screws in a secure location for re-use in later stages of installation.
4. Hang the Upper Trim Panel onto Hanger Bracket so the Panel's Mounting Channel rests on the Bracket. Ensure the Wall Mounting Plate is lined up correctly and secure the panel to the wall with the installer provided 1/4" Threaded Rods. Verify the level, left to right **AND** front to back from bottom of unit.  
**NOTE:** Draining may be adversely affected if unit is not square and level.
5. Remove the Basin Deck, then secure the Cabinet Housing to the Wall Mounting Plate using the installer provided 1/4" Anchoring Hardware. After making up necessary connections, install Basin Deck onto the Cabinet Housing using #10 x 3/4" Screws.
6. Thoroughly flush the 1/2" NPS supply line and then connect 1/2" flex hose to water supply angle stop valve (by others).
7. Make up 1-1/4" O.D. waste Tailpiece to P-Trap (by others) to waste connection. Complete any necessary electrical connections to Faucet and Hot Water Heater (when specified).
8. Attach Lower Trim Panel to the Valve Box / Heater Enclosure using installer provided 1/8" Screws. Then cap the screws with provided Round Plugs.

## FIXTURE ANCHORING

- 1** Install Valve Box into Blockout Area and Secure using Installer Provided Fasteners.



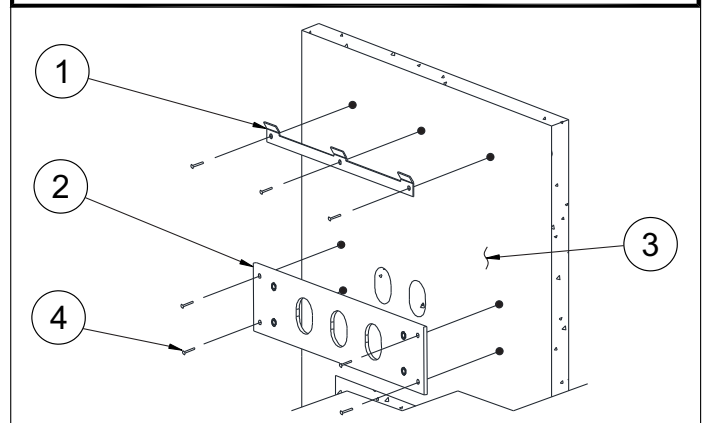
**IMPORTANT:** Industry standard wall backing for wall hung fixtures is required. Installer Provided wall anchors and wall anchoring hardware must be appropriate for wall construction and have a minimum pull-out rating of 1000lbs (454kg).

- 1 Finished Wall
- 2 Blockout Area
- 3 Valve Box / Heater Enclosure
- 4 Installer Provided Fasteners

**NOTE:** It is recommended to level and plumb Mounting Plate and Hanger Bracket prior to mounting Upper Trim Panel and Basin Assembly.

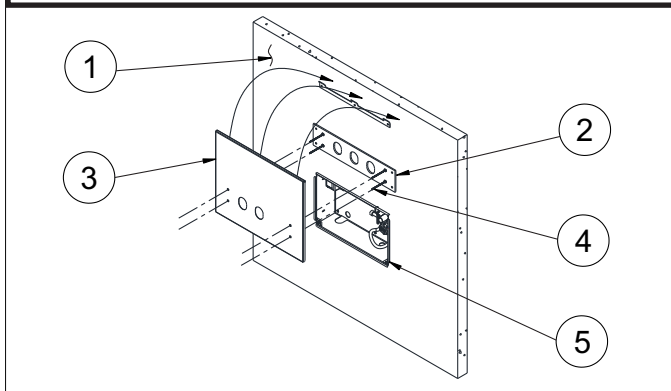
- 1 Hanger Bracket
- 2 Wall Mounting Plate
- 3 Finished Wall
- 4 Installer Provided 1/4" Anchoring Hardware

- 2** Secure Mounting Plate and Hanger Bracket onto Finished Wall according to Rough-In dimensions.




**NOTE:** It is recommended to install the provided 1/4" Threaded Rods to a minimum of 1" through the Wall Mounting Plate to ensure a secure anchor.

- 3** Mount Upper Trim Panel onto Hanger Bracket until the Panel Mounting Channel rests on Bracket. Then Secure Panel to the Wall Mounting Plate using Installer Provided 1/4" Threaded Rods.



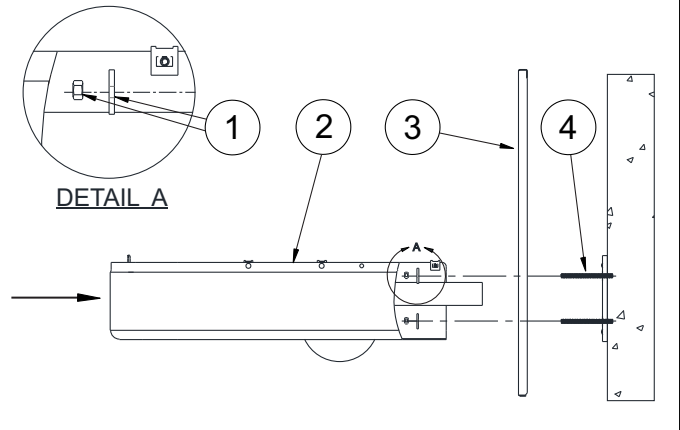
- 1 Finished Wall
- 2 Wall Mounting Plate
- 3 Upper Trim Panel
- 4 Installer Provided 1/4" Threaded Rods
- 5 Valve Box / Heater Enclosure

## FIXTURE ANCHORING (CONTINUED)

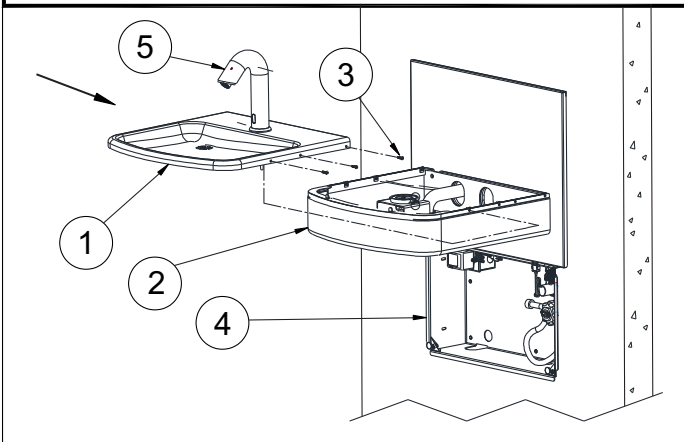
 NOTE: It may be helpful to install faucet to the Basin Deck prior to Cabinet mounting. Refer to Faucet Installation provided with instructions for relevant information.


- 1 1/4" Hardware (Provided)
- 2 Wide Cabinet, Weldment
- 3 Upper Trim Panel
- 4 1/4" Threaded Rods (Provided)

**4** Secure Cabinet to the Wall Mounting Plate using 1/4" Hardware (Provided).




**5** Attach Basin Deck to Cabinet using #10 x 3/4" Screws (Provided).



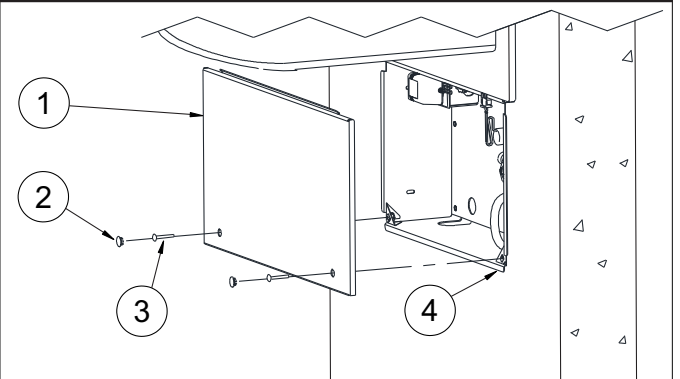
 NOTE: Refer to Faucet Piping and Electrical details prior to attaching lower trim panel.

- 1 Basin Deck
- 2 Cabinet Housing
- 3 #10 x 3/4" Screws (Provided)
- 4 Valve Box / Heater Enclosure
- 5 Sensor Faucet (Provided)

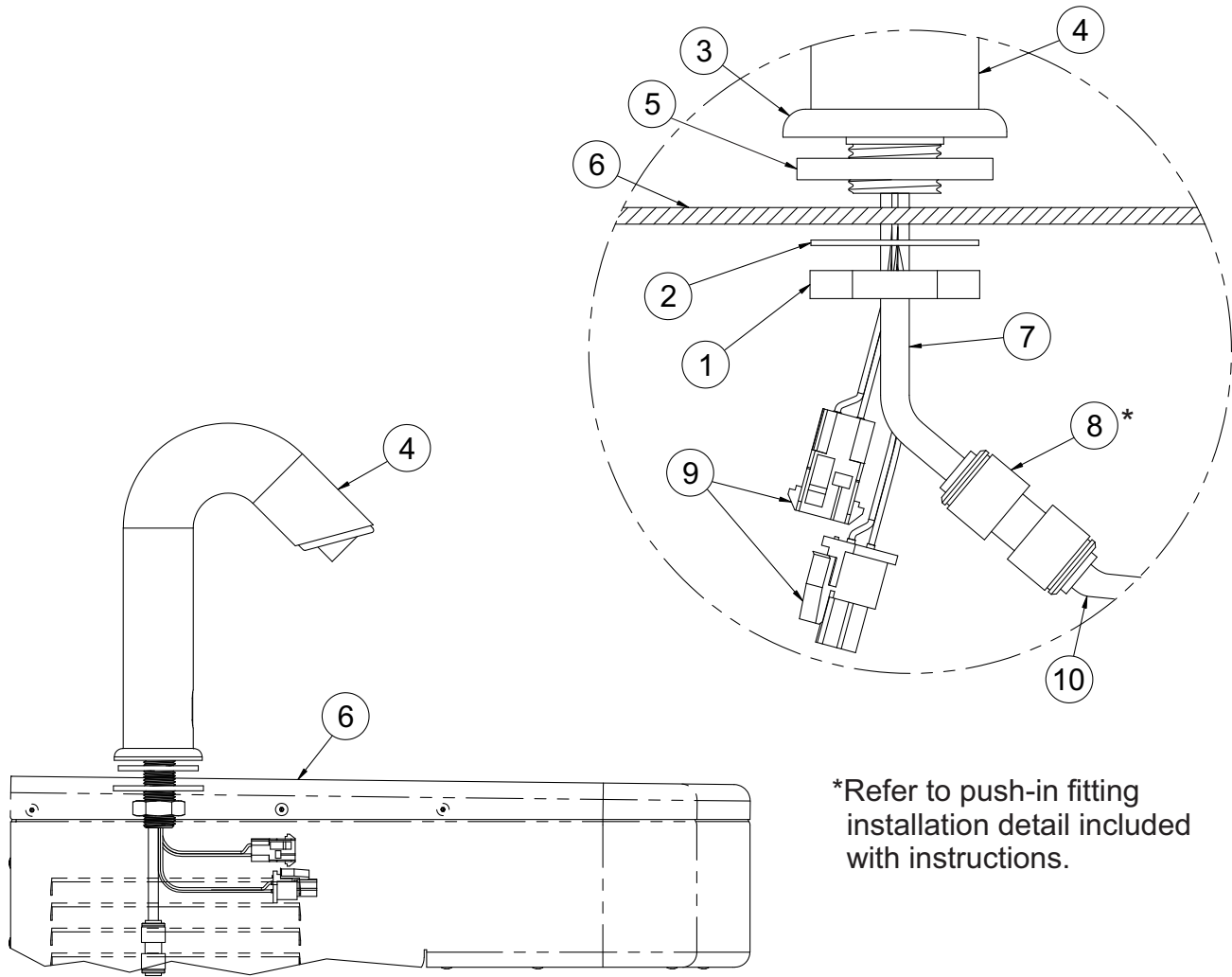
 NOTE: It is recommended to flush the water supply lines prior to making up the necessary supply connections.

- 1 Lower Trim Panel
- 2 Round Plugs (Provided)
- 3 #10-32 Screws (Provided)
- 4 Valve Box / Heater Enclosure

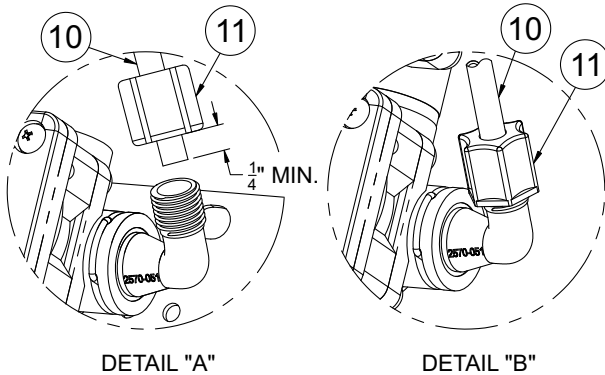
**6** Attach Lower Trim Panel to the Valve Box / Heater Enclosure using #10-32 Screws (Provided) and cap the screw openings with provided Round Plugs.



**A191W FAUCET INSTALLATION**



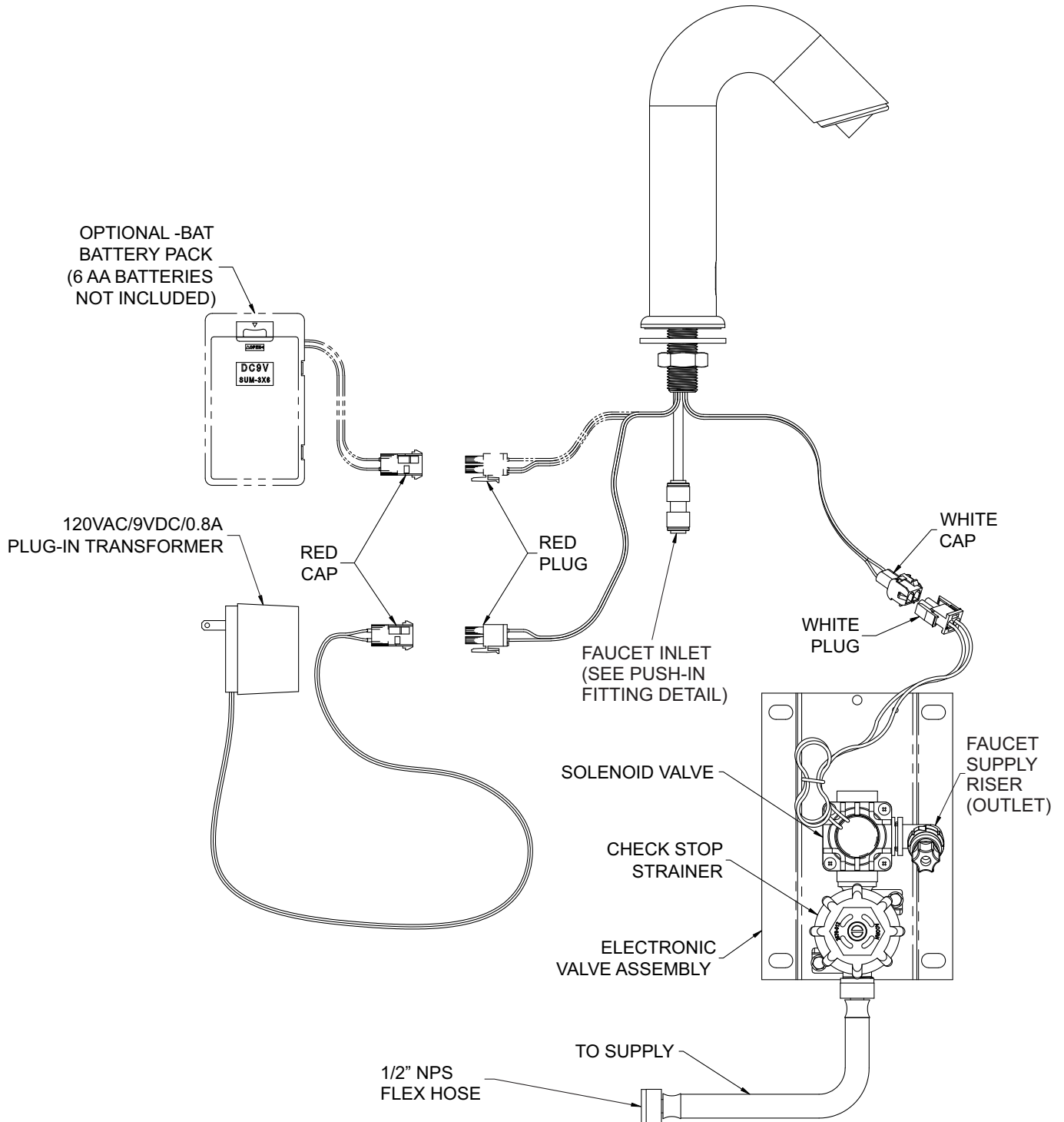
\*Refer to push-in fitting installation detail included with instructions.



**INSTALLATION INSTRUCTIONS:**

- A- REMOVE BRASS NUT ① AND WASHER ② FROM THE BASE ③ OF SPOUT ④. DO NOT REMOVE RUBBER GASKET ⑤.
- B- FROM ABOVE DECK ⑥ : MAKE SURE RUBBER GASKET ⑤ IS PROPERLY SEATED WITHIN THE BASE ③ OF SPOUT ④. FEED TUBE ⑦, UNION FITTING ⑧ AND SENSOR PLUGS ⑨ THRU PUNCHED OPENING. POSITION SPOUT ③ ON DECK ⑥ AND INSERT THRU THE DECK.
- C- FROM BELOW DECK ⑥ : REASSEMBLE BRASS NUT ① AND WASHER ② TO THE BASE ③ OF SPOUT ④. ENSURE THAT GASKET ⑤ SEALS PROPERLY BEFORE TIGHTENING.
- D- CONNECT POLYETHYLENE 1/4" O.D. WATER LINE ⑩ TO UNION FITTING ⑧. CONNECT TO THE FERRULE NUT ⑪ ON THE VALVE ASSEMBLY, AS SHOWN IN DETAIL "A" AND "B".

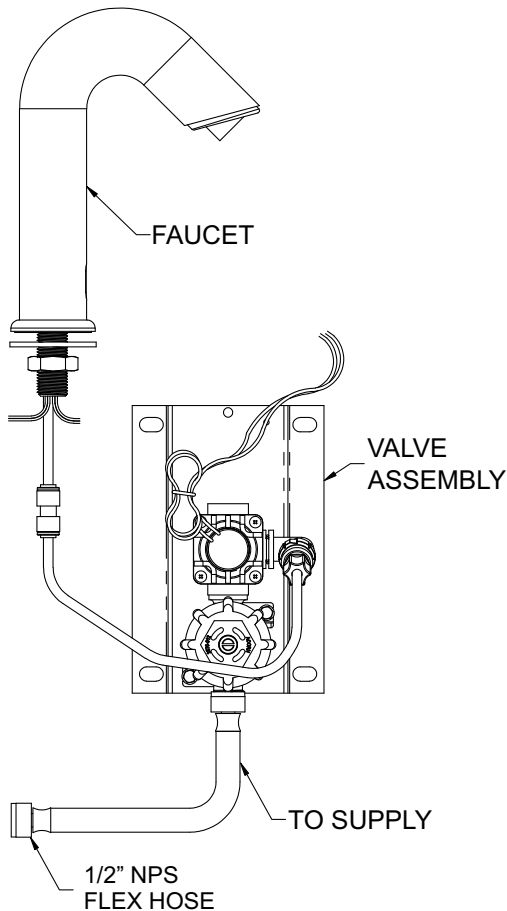
**A191W FAUCET ELECTRICAL**



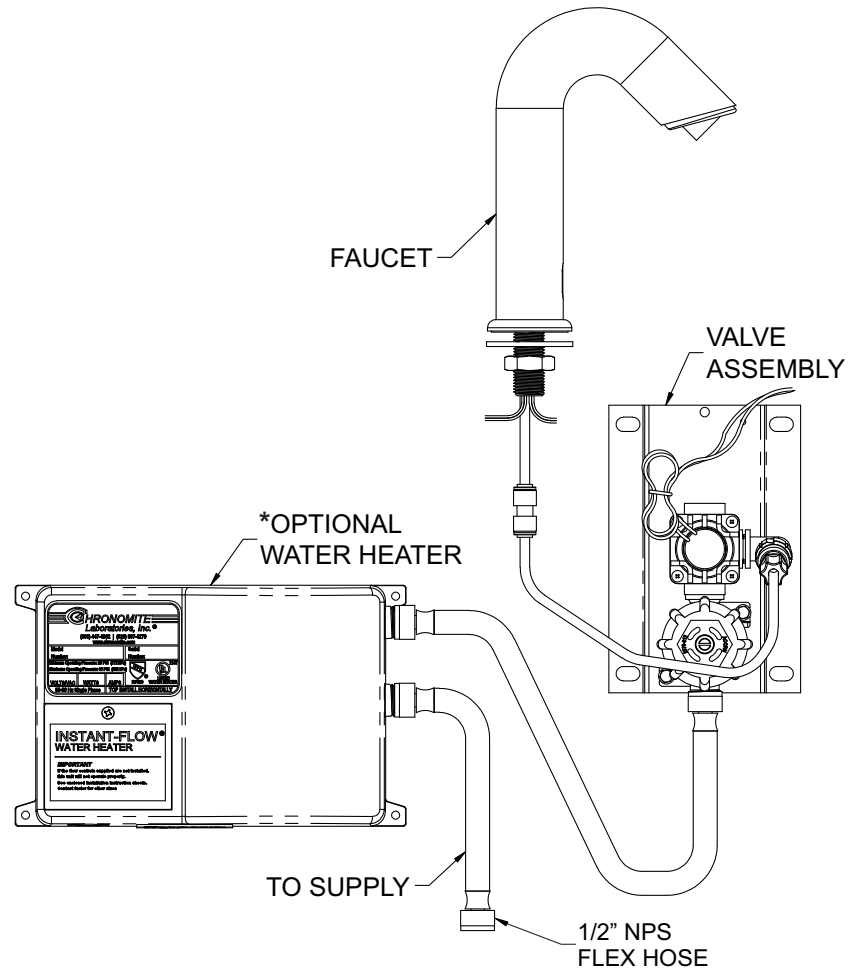


## A191W FAUCET PIPING

### STANDARD



### WITH WATER HEATER OPTION



### **START UP:**

1. Before assembling bottom trim panel, but after thoroughly flushing the supply line and connecting it to the fixture, turn on building water supply and check all connections for leak.
2. Recheck all water and drain connections with water flowing through system.
3. Assemble bottom trim panel.

#### **\*IMPORTANT: For units with Optional Water Heater (H240 or H120):**

Electrical supply will be required from remote Junction Box (not shown), and hard wired per Water Heater Manufacturer instructions. Refer to complete installation instructions provided by Chronomite® Electric Tankless Water Heaters, C-Micro® Point of Use Thermostatic Tankless Water Heater series. Refer to the Installation Instructions for the model specified:

- Option H120 Chronomite # CM12L/120 104F-NPT08 (12 amp 120 volt)
- Option H240 Chronomite # CM20L/240 104F-NPT08 (20 amp 240 volt)

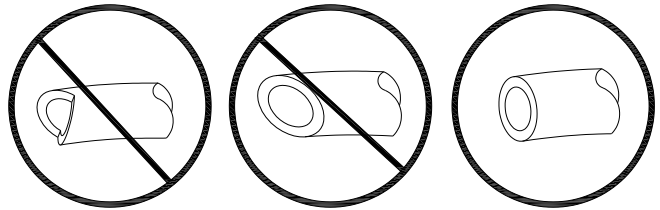
For additional information refer to website: [www.Chronomite.com](http://www.Chronomite.com)

### **PUSH-IN FITTING INSTALLATION**

NOTE: FITTINGS AND TUBE SHOULD BE KEPT CLEAN, BAGGED AND UNDAMAGED PRIOR TO INSTALLATION.

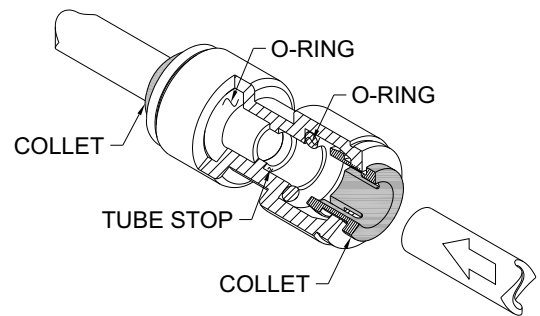
#### **TO CUT TUBE:**

Cut to fit length of 1/4" PE tubing and remove any burrs or sharp edges. Ensure that the outside diameter is free from score marks. Tube ends should be square.

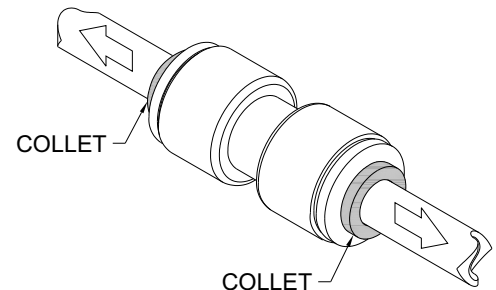


#### **INSERTING THE TUBE:**

1. Firmly and fully insert the tubing end into the push-in fitting up to the tube stop located approximately 1/2" deep.

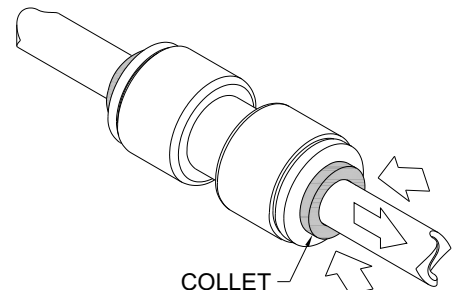


2. Pull on the fitted tubing to ensure it is secure. Tube should not come free from the fitting. Water test the connection assembly prior to leaving the site to ensure there are no leaks.

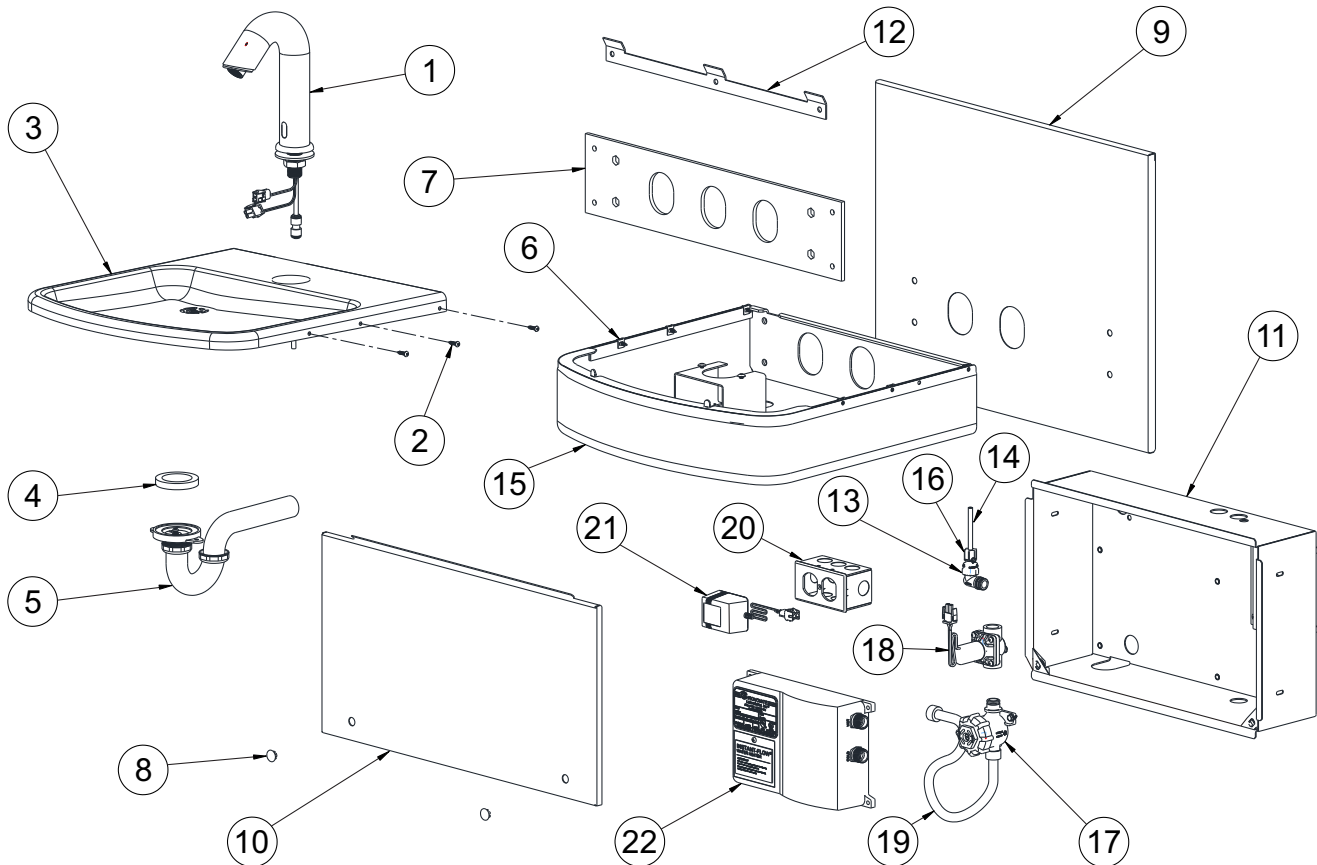


#### **DISCONNECTING THE TUBE:**

To disconnect the tube from the fitting ensure that the water line is depressurized. Push collet square towards the push-in fitting body and hold. While holding the collet in, pull on the PE tubing to remove from the push-in fitting.



**A191W PARTS BREAKDOWN**



ITEM #	PART NUMBER	DESCRIPTION
1	2993-230-001	9VDC SENSOR OPERATED "J" SPOUT W/ 1.0 GPM
2	0250-016-000	#10 x 3/4" LONG TORX ROUND HEAD SCREW
3	7003-511-199	BASIN DECK W/ HI PUNCHING
	7003-512-199	BASIN DECK FOR PUMP SOAP OPTION
	7003-513-199	BASIN DECK FOR SENSOR OPERATED SOAP OPTION
4	7000-006-000	DRAIN ADAPTER GASKET
5	7000-015-000	1-1/4" P-TRAP, NICKEL PLATED
6	7000-415-000	#8-32 SELF RETAINING J-NUT
7	7001-706-199	WALL MOUNTING PLATE
8	7001-726-000	ROUND PLUGS, 1/2" DIA HOLES
9	GVLHW001-199	UPPER TRIM PANEL
10	GVLHW002-199	LOWER TRIM PANEL
11	GVLHW003-199	VALVE BOX / HEATER ENCLOSURE
12	GVLHW005-199	HANGER BRACKET
13	2570-045-001	FLOW CONTROL ELBOW ASSEMBLY
14	2169-000-000	1/4" OD BLUE TUBING
15	GVLHW000-003	WIDE CABINET, WELDMENT
16	1895-451-000	1/4" OD NYLON NUT W/ PLASTIC GRIPPER
17	2570-000-001	STRAINER CHECKSTOP ASSEMBLY
18	2570-131-001	9VDC LH SOLENOID VALVE ASSEMBLY
19	2195-015-000	1/2" NPS x 15-3/4" BRAIDED S.S. HOSE
20	0709-021-000	JUNCTION BOX
21	0710-735-001	120VAC/9VDC PLUG-IN POWER SUPPLY
22	7003-592-000	120VAC WATER HEATER (OPTION H120)
	7003-591-000	240VAC WATER HEATER (OPTION H240)