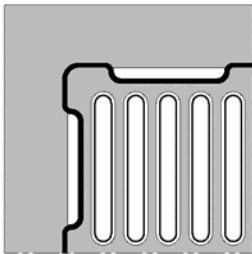
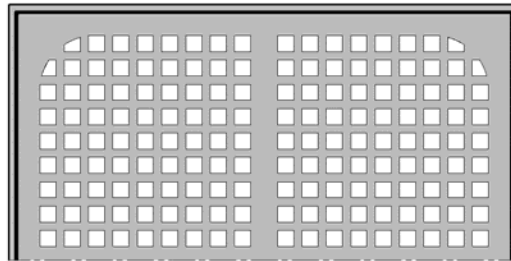


## 9150 12" Square, A.R.C. Floor Sink, 10" Sump Depth (Replaces 9150-LF)

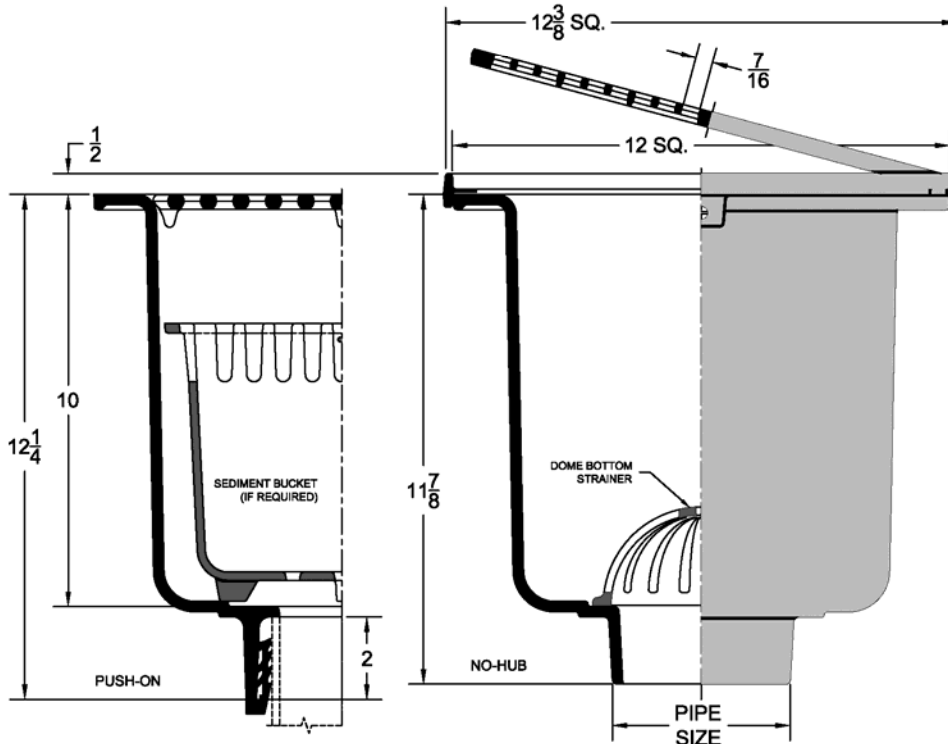
Project	Engineer	Mechanical
---------	----------	------------



(64) A.R.E. GRATE



NICKEL BRONZE TOP



9150	-1	-64	-85
•	A.R.C. Cast Iron Body with Satin Finish Nickel Bronze Frame & Grate	A.R.C. Cast Iron Body & A.R.C. Cast Iron Grate	A.R.C. Cast Iron Body with Satin Finish Stainless Steel Frame & Grate
Grate Free Area (Sq. In.)	55.4	41.7	36.0

**Regularly Furnished:** Cast iron floor sink with A.R.C. interior, plastic interior dome strainer & full grate.

Outlet Variations		
Type	Designation	•
Inside Caulk	2IC,3IC,4IC	
No-Hub	2NH,3NH,4NH	
Push On Gasket	2TY,3TY,4TY	

Funnel Options		
Suffix	Description	•
-EF4	4" Round Funnel Assembly *	
-EF6	6" Round Funnel Assembly*	
-EG6	6" Elongated Funnel Assembly*	
-EG8	8" Elongated Funnel Assembly*	

Suffix Options		
Suffix	Description	•
-TSD	Trap Seal Device (See Model 4405)	
-VP	Vandal Proof Top Assembly	
-6	1/2" Trap Primer Connection	
-15	1/2 Grate	
-16	3/4 Grate	
-17	Grate with Center Opening	
-18	Solid Cover	
-20	Depressed Grate (-1 Only)	
-21	Less Grate	
-24	Anchor Flange *	
-26	Anchor Flange w/ Clamping Collar *	
-27	Aluminum Sediment Bucket	
-48	Aluminum Dome Strainer	
-107	Angle Frame & Grate (-1 Only)	
-108	Less Dome Bottom Strainer (Deduct)	
-110	A.R.C. Sediment Bucket	
-123	Stainless Steel Bucket Liner	

\*Dimensions vary from illustration