



# Gutter RetroDrain

## PRODUCT DATA SPECIFICATIONS

### PRODUCT DESCRIPTION

Its unique dimensions allow the Gutter RetroDrain to be installed within 9-in. wide box type gutters, near parapet walls or other tight areas. The patented RAC Backflow Compression Seal provides a proven plumbing connection with the existing leader pipe. Available in 3-in. and 4-in. sizes.

### FEATURES & BENEFITS

- Pre-punched, .080-in. thick 8-in. x 8-in. aluminum drain flange.
- Strainer dome constructed of .065-in. thick aluminum and is 8-in. in diameter.
- Includes a 6-in. diameter, .125-in. thick, low profile, aluminum clamping ring that provides a tight compression for terminating for the roof system. The clamping ring is secured to the drain body with stainless steel studs.
- Patented RAC Backflow Compression Seal is quickly activated at drain flange level with a 7/16-in. wrench and protects the roof and building from water damage.
- Designed to accommodate tight field conditions.
- Saves time and money by allowing easy installation from the rooftop without disturbing occupants.

### APPLICATION

OlyFlow® RetroDrains are designed to replace existing drains in reroofing applications. Installed from the roof surface, OlyFlow RetroDrains are engineered to be installed without removing the existing plumbing or fixture while providing a watertight connection to the roof system and the existing plumbing.

### APPROVALS & STANDARDS

**ANSI/SPRI RD-1** is a national performance standard for retrofit roof drains. While most retrofit drains are not tested to this standard, OlyFlow Insert Drains – including the Gutter RetroDrain with RAC Backflow Compression Seal – exceed the standard, which requires that the seal hold a 10-ft. column of water for 24 hours without leaking.



**IAPMO PS 97-96** – a standard plumbing industry test designed to check for leakage at connections under a 10-ft. head of water for a 24 hour period. This test was performed by the Smith-Emery Company, a nationally recognized independent test laboratory providing physical testing of construction related materials. The Gutter RetroDrain produced no leakage.



### PHYSICAL DATA

The data below is constant for all OMG Gutter RetroDrains.

DRAIN BODY		SEAL	
.080" thick aluminum		Watertight RAC Backflow Compression Seal requires 7/16" wrench	
FLANGE		STRAINER DOME	
8" x 8"		8" diameter, made of .065" thick aluminum	
STEM		CLAMP RING	
9" length		.125" thick low profile aluminum	

### ORDERING INFORMATION

CAT. NO.	SIZE IN	DOME TYPE	PKG QTY	DIMENSIONAL WEIGHT LBS
GM3	3	Aluminum	1	20
GM4	4	Aluminum	1	20



# Gutter RetroDrain

## INSTALLATION PROCEDURE

### FOR USE WITH

All types of roof covers.

### JOB PREPARATION

The existing leader pipe shall be cleaned of excess bitumen build-up, dirt and debris. Remove the clamping ring assembly and bolts from the existing drain and discard. If required, comply with roof manufacturer's directions for additional cleaning or detailing.

### STEP 1

**Important** – The aluminum activation cone may have settled into the backflow seal during shipping which may partially activate the seal. To deactivate the seal, simply push down on the top of the two backflow bolts. **Note:** The top of the tapered metal cone should remain inside the bottom of the urethane seal. Do not fully disengage the cone from the urethane seal.

### STEP 2

Lower the Retrofit Drain Assembly into the existing drain leader pipe until the underside of the drain flange sits flat on the substrate.

### STEP 3

Using the pre-punched holes in the perimeter of the flange, secure the drain flange to the substrate with appropriate fasteners.

### STEP 4

**Hand tighten** the  $\frac{7}{16}$ -in. bolts on the backflow rods to activate the seal. **Alternate tightening** between the bolts for an even seal expansion. Rods should be snug when fully activated. Do not overtighten.

### STEP 5

Install roofing material per roofing manufacturer's drain flashing details.

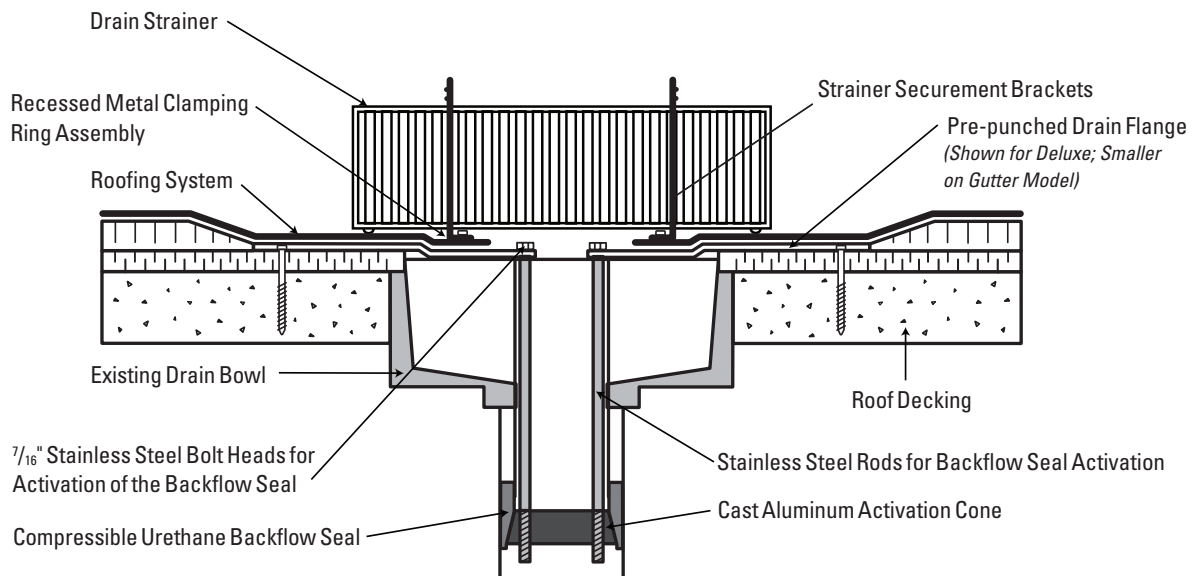
### STEP 6

Install the metal clamping ring over the flashing materials and secure in place by **hand-tightening** the lock nuts provided. Do not overtighten.

### STEP 7

Place the 1-in. long slots in the top of the strainer directly over the two strainer securement brackets by pressing the two brackets inward. Push down until strainer is at roof level.

**For technical assistance contact  
OMG at 800-633-3800.**



## ROOFING PRODUCTS

153 BOWLES ROAD, AGAWAM, MA 01001 USA  
800-633-3800 413-789-0252 [OMGROOFING.COM](http://OMGROOFING.COM)

Superior productivity.  
Superior performance.

RetroDrain® and OlyFlow® are trademarks of OMG, Inc. Copyright © 2018 OMG, Inc. All rights reserved.

