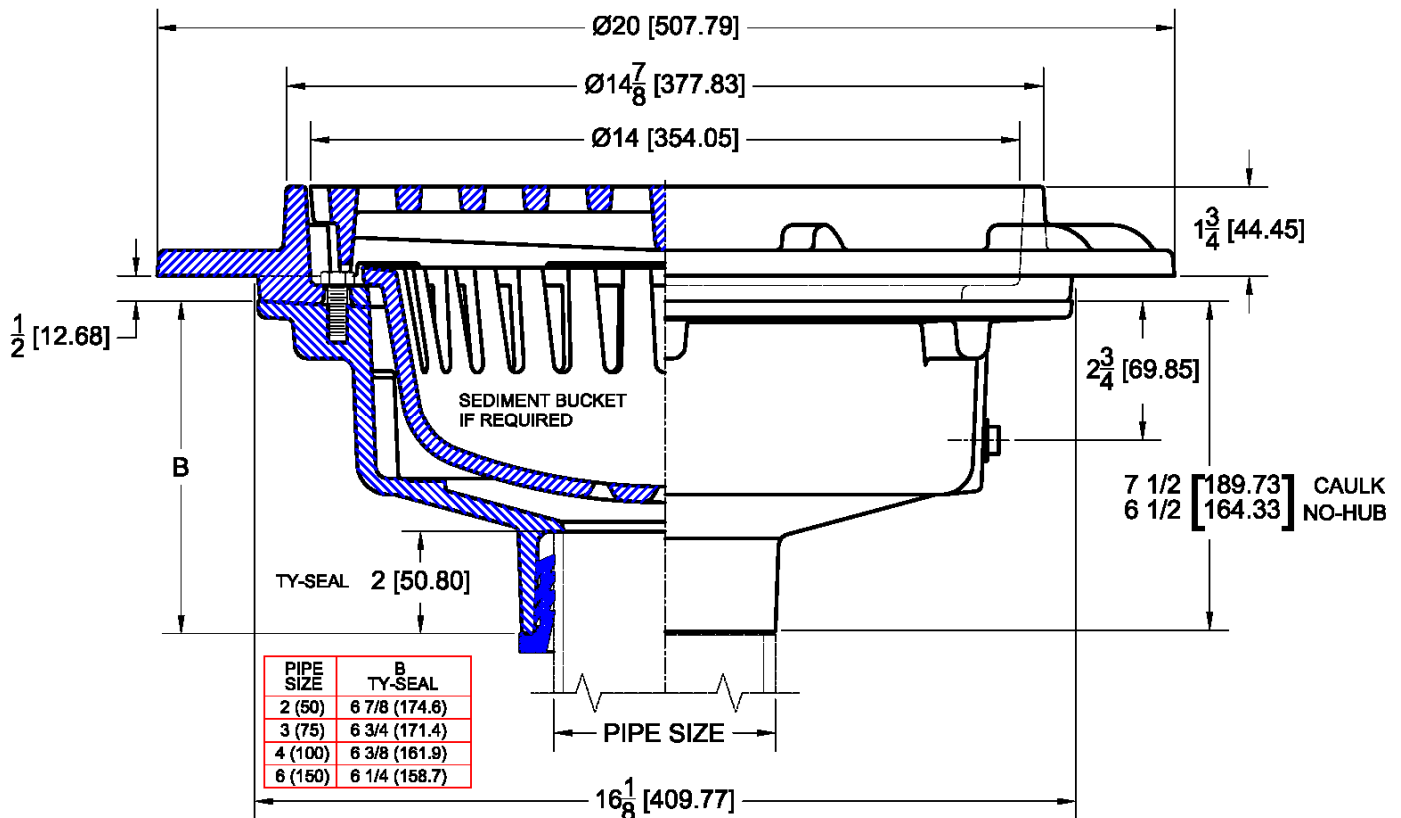


1417 Parking Area Drain with Round Fixed Top – Slotted Grate

Regularly Furnished: Painted cast iron parking area drain with heavy anchor flange, clamping collar, ductile iron slotted grate, medium sump body, ½" NPT trap primer tap (plugged) and bottom outlet.

ASME Load Rating = S.D. (Special Duty) Over 10,000 Lbs.



| Top Material | | |
|--------------|--------|---|
| ✓ | Suffix | Description |
| | -1 | Satin Finish Nickel Bronze Veneer |
| | -2 | Satin Finish Bronze Veneer |
| | -12 | Ductile Iron |
| | -102 | Polished Chrome Plated Brass Veneer |
| | -304 | Satin Finish 304 Stainless Steel Veneer |

| Outlet Variations | | |
|-------------------|--------------|-------------------------------|
| ✓ | Type | Designation |
| | No-Hub | 2NH, 3NH, 4NH, 6NH, 8NH, 10NH |
| | Push-On | 2TY, 3TY, 4TY, 6TY, 6TX(PVC) |
| | Inside Caulk | 3IC, 4IC, 6IC |

| Funnels | | |
|---------|--------|------------------------------|
| ✓ | Suffix | Description |
| | -EF4 | 4" Round Funnel Assembly |
| | -EF6 | 6" Round Funnel Assembly |
| | -EG8 | 8" Elongated Funnel Assembly |

| Options | | |
|---------|--------|-------------------------------------|
| ✓ | Suffix | Description |
| | -ARC | Acid Resistant Coating (C.I. Parts) |
| | -E | Elastomeric Flange * |
| | -TSD | Trap Seal Device (Model 4405) |
| | -TD | Grate Supported Bucket |
| | -SO | 90 Degree Side Outlet |
| | -VP | Vandal Proof Secured Grate |
| | -7 | Dome Grate |
| | -8 | Secondary Strainer |
| | -11 | Heel Proof Grate |
| | -23 | Grate Riser (3" High) |
| | -27 | Sediment Bucket |
| | -31 | Backwater Valve (2,3,4" Only) |
| | -33 | Closure Plug |
| | -39 | Galvanized Iron Parts |
| | -83 | Special Engraving |