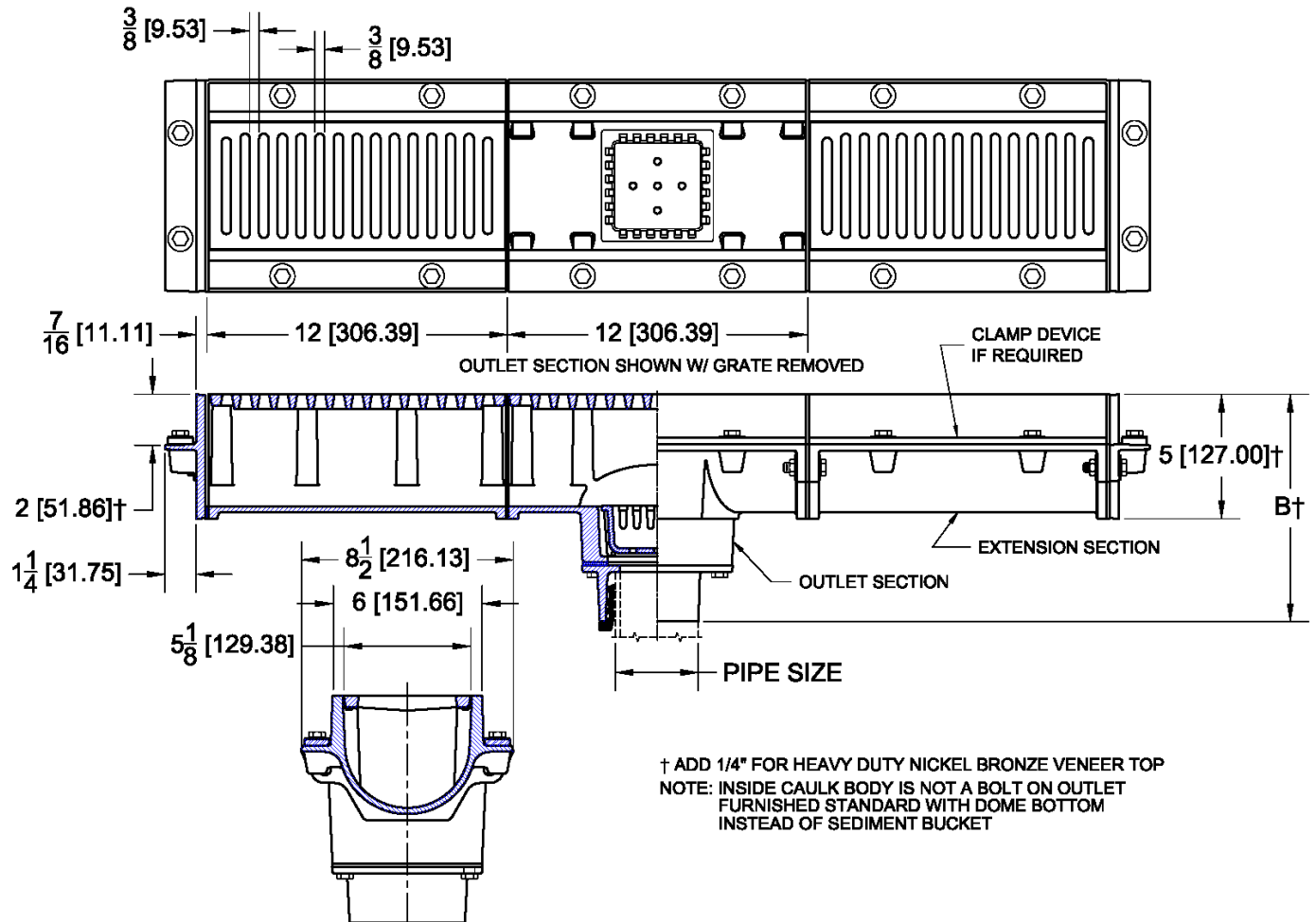


2950 6" Wide Modular Trench Drain

Regularly Furnished: Painted cast iron trench drain with ductile iron loose set slotted grating, anchor flange and bottom outlet.

Standard Grate ASME Load Rating = MD Medium Duty (2000 lbs to 4999 lbs) Din Class B



Grate Material		
✓	Suffix	Description
	-1	Satin Finish Nickel Bronze Veneer
	-2	Satin Finish Bronze Veneer
	-12	Ductile Iron
	-102	Polished Chrome Plated Brass Veneer
	-304	Satin Finish 304 Stainless Steel Veneer

Outlet Variations		
✓	Type	Designation
	No-Hub	2NH, 3NH, 4NH
	Push-On	2TY, 3TY, 4TY
	Inside Caulk	3IC, 4IC

Outlet		B
TY (Push-On)		9 1/8 (232)
NH (No-Hub)		9 1/8 (232)
IC (Inside Caulk)		7 1/2 (191)

Options		
✓	Suffix	Description
	-ARC	Acid Resistant Coating
	-SD	Special Duty Grates (Din Class E)
	-VP	Vandal Proof Secured Grate
	-18	Solid Cover
	-24	Anchor Flange with Clamping Device
	-27	Cast Iron Sediment Bucket
	-39	Galvanized Iron Parts