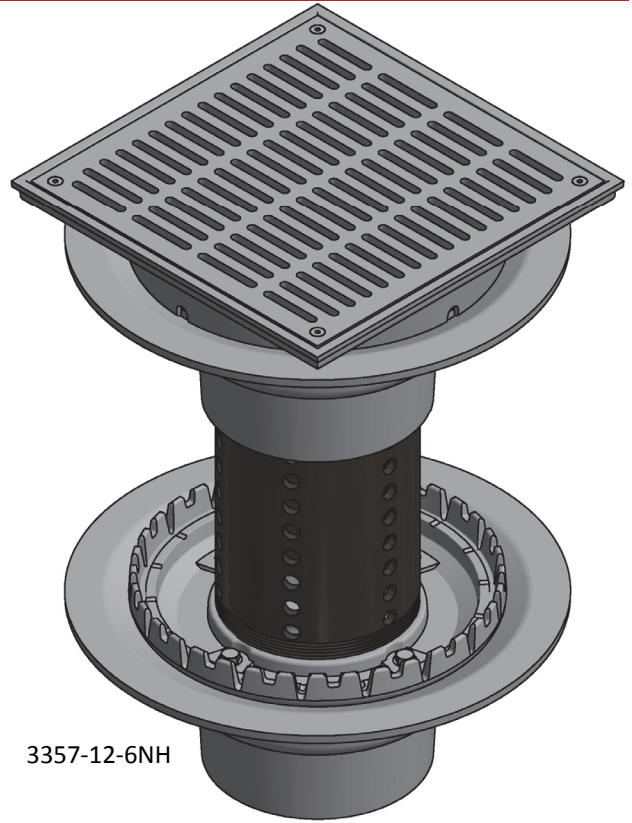
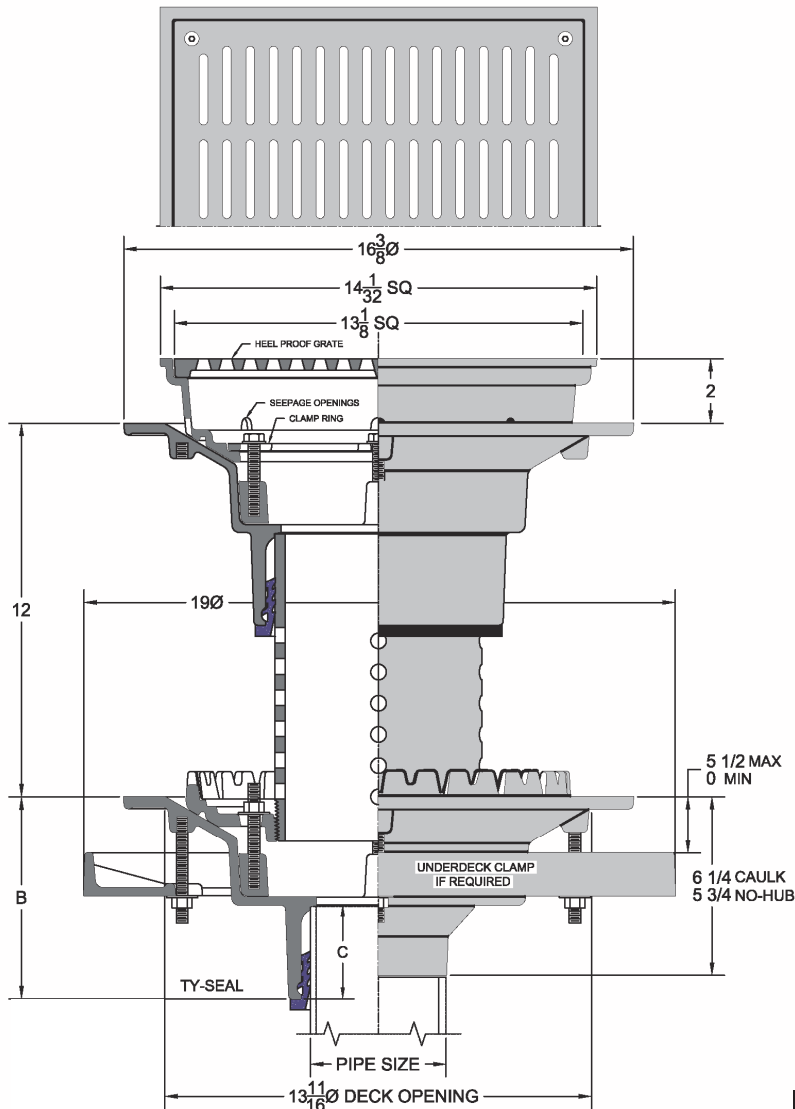


3357 Promenade Area Green Roof Drain

Project	Engineer	Mechanical
---------	----------	------------



Dimensions (In.)		
Pipe Size	B	C
2"	6 3/8	2 1/2
3"	6 5/8	2 3/4
4"	6 7/8	3
6"	6 3/8	3

3357	-1	-2	-12	Grate Free Area (Sq. In.)
•	Cast Iron Body with Satin Finish Nickel Bronze Top	Cast Iron Body with Satin Finish Bronze Top	Cast Iron Body with Ductile Iron Top	46.5

Regularly Furnished: Cast iron green roof drain with flange, flashing ring, gravel stop, plastic perforated standpipe, square promenade top and bottom outlet.

Suffix Options		
Suffix	Description	•
-ARC	Acid Resistant Coating	
-E	Elastomeric Flange*	
-SO	90 Degree Side Outlet (3NH,4NH,6NH*)	
-39	Galvanized Cast Iron	
-52	Sump Receiver*	
-53	Under-Deck Clamp*	
-189	Bearing Pan w/ Clips & Securing Hardware*	

Optional Extensions		
Suffix	Description	•
-ADF	Adjustable Extension*	Painted -39 Galv
-AE	Adjustable Deck Riser*	Painted -39 Galv
-DF	Fixed Extension (1", 2", 3" or 4") *	Painted -39 Galv
-EB	Adjustable Drain Extension Pan*	

Outlet Variations		
Type	Designation	•
Inside Caulk	2IC,3IC,4IC,5IC,6IC	
No-Hub	2NH,3NH,4NH,5NH,6NH,8NH	
Push On Gasket	2TY,3TY,4TY,6TY(CI),6TX(PVC)	
Threaded	2IPS,3IPS,4IPS,5IPS,6IPS,8IPS	

*Dimensions vary from illustration