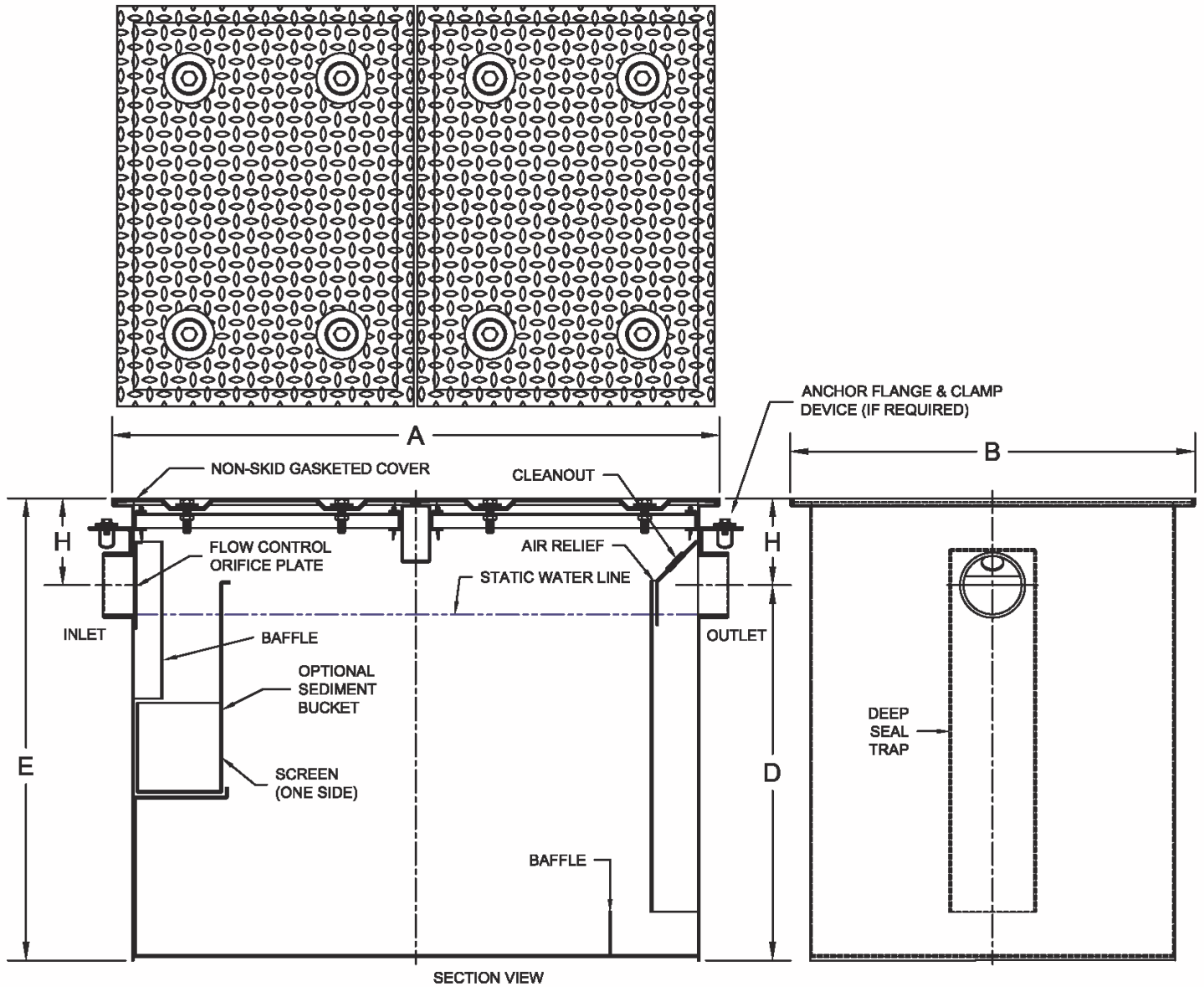


5200 Large Capacity Grease Interceptor

Regularly Furnished: Fabricated A.R.C. steel grease interceptor with removable baffles, & gasketed cover.

Project	Engineer	Mechanical
---------	----------	------------



●	Size GPM	Pipe Size	Capacity		Dimensions (Inches)					No. of Lids
			Lbs.	Gallons	A	B	D	E	H	
	75	4"	150	106	42	28	26	32	6	2
	100	4"	200	193	55	37	26	34	8	2
	125	4"	250	227	58	38	28	36	8	3
	150	4"	300	265	61	39	30	38	8	3
	200	4"	400	396	70	44	34	44	10	6
	250	4"	500	501	75	46	38	48	10	6
	300	4"	600	580	77	49	40	52	12	6
	400	6"	800	805	84	56	44	58	14	6
	500	6"	1000	1172	92	61	54	68	14	6

*Dimensions vary from illustration

Suffix Options		
Suffix	Description	●
-18	Heavy Duty Cover *	
-24	Anchor Flange*	
-26	Anchor Flange w/ Clamp Device *	
-FH	Housing w/ Adjustable Cradle *	
-FHT	Full Housing w/ Adjustable Housing *	
-T	Cover Recessed for Tile (Specify Thickness) *	
-XT	Fixed Extension (Specify Height) *	
Outlet Variations		
-NH	No-Hub	
-IPS	Female Threaded	