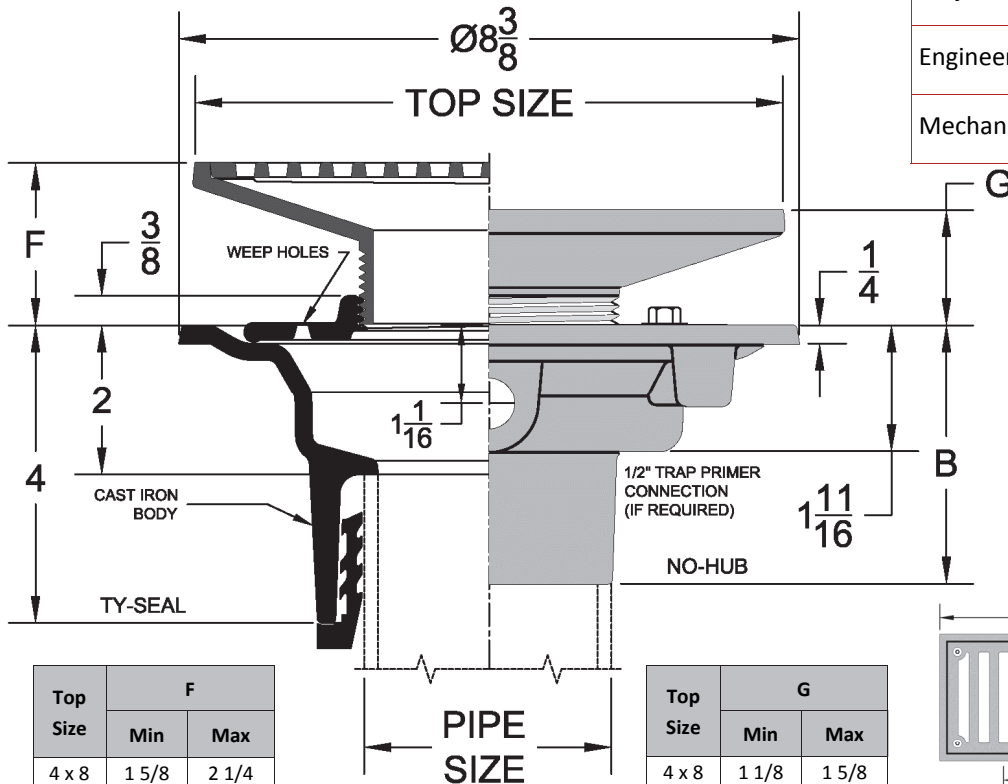


1100-H Floor Drain Body with Adjustable Top Assembly

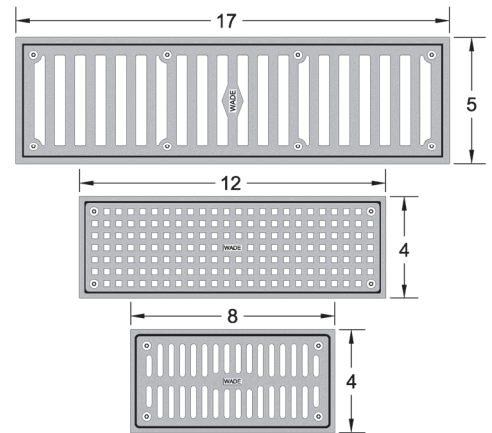
Project	
Engineer	
Mechanical	



Top Size	F	
	Min	Max
4 x 8	1 5/8	2 1/4
4 x 12	1 5/8	2 1/4
5 x 17	2 1/4	3

Top Size	G	
	Min	Max
4 x 8	1 1/8	1 5/8
4 x 12	1 1/8	1 5/8
5 x 17	1 3/4	2 5/8

Outlet	No-Hub	Inside Caulk	Threaded
B	3 1/2	4 1/4	2 3/4



Top Size & Type	•		Grate Free Area (Sq. In.)
	-1 Cast Iron Body with Satin Finish Nickel Bronze Top	-2 Cast Iron Body with Satin Finish Bronze Top	
H4X8			10.0
H4X12			14.0
H5X17			32.0

Regularly Furnished: Cast iron floor drain body with flange, integral clamping collar, seepage openings, 1/2" primer tap with plug, adjustable type "H" top assembly.

Outlet Variations		
Type	Designation	•
Inside Caulk	2IC,3IC,4IC	
No-Hub	2NH,3NH,4NH,6NH*	
Push On Gasket	2TY,3TY,4TY	
Threaded	2IPS,3IPS,4IPS	

Suffix Options		
Suffix	Description	•
-ARC	Acid Resistant Coating	
-DC	Debris Cover	
-DIA	Deck Installation Assembly*	
-SO	90 Degree Side Outlet (2IPS,3IPS,4IPS)*	
-TSD	Trap Seal Device (See Model 4405)	
-VP	Vandal Proof Top Assembly	
-27	Sediment Bucket	
-31	Backwater Valve	
-33	Closure Plug	
-39	Galvanized Cast Iron	
-83	Special Engraving	
-94	Cast Iron Extension Adapter*	Painted -39 Galv
-102	Chrome Plated Top Assembly	

*Dimensions vary from illustration