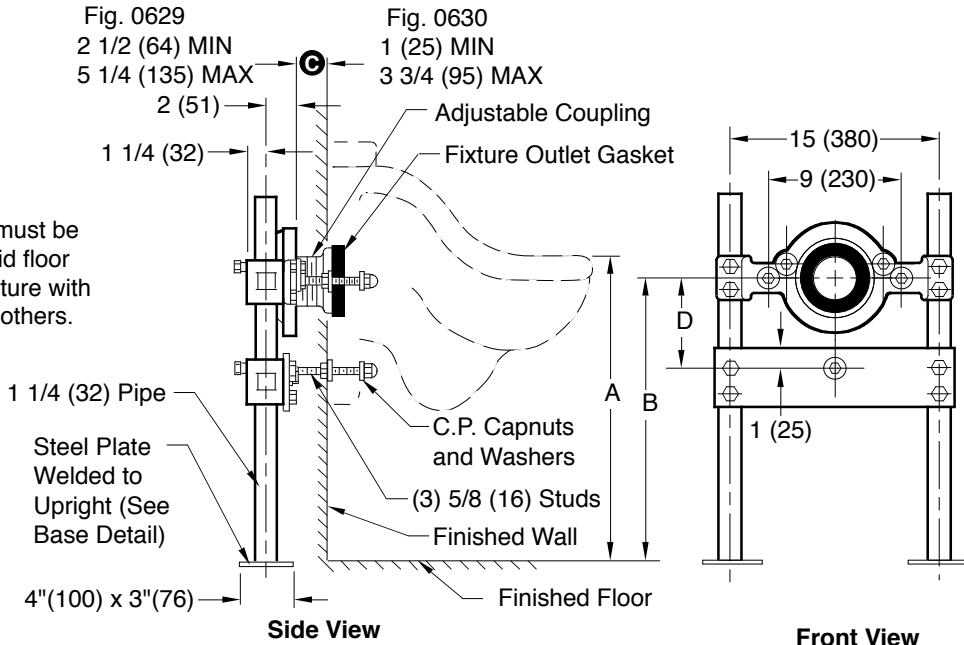


# URINAL SUPPORTS FOR OFF-THE-FLOOR URINALS

## WITH SUPPORTING STUDS AND ADJUSTABLE COUPLING FOR BLOWOUT URINALS

**NOTE:** All support bases must be securely anchored to a rigid floor and/or other rigid substructure with (4) 1/2" bolts furnished by others.

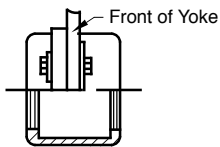


**NOTE:** Dimensions shown in parentheses are in millimeters.

Fig. 0629 . . . 3" (75) Outlet Connection  
 Fig. 0630 . . . 4" (100) Outlet Connection

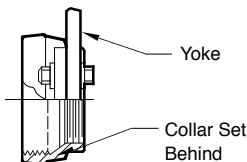
FIXTURE NAME	FIXTURE NAME	NUMBER	SIZE	A	B	D
Amer. Std.	Clinic Service Sink	9512.013	24(610) x 20(510)	30 (760)	24 3/4 (630)	6 1/4 (160)
Crane	Sani Sink	7H-544	21(535) x 25(635)	30 1/4 (770)	24 3/8 (619)	6 1/4 (160)
Eljer	Judson	241-0260	21(535) x 19(485)	27 (685)	21 1/4 (540)	6 1/4 (160)

The water closet gasket regularly furnished is made of molded neoprene and designed to fit water closet outlet dimensions and configurations shown in ANSI Standard A112.19.2M-1982, Figure 13B. If gasket is not found to be compatible to fixture due to nonconformance of said fixture to ANSI A112.19.2M, then fixture manufacturer shall be consulted for a suitable gasket recommendation. Jay R. Smith assumes no liability for connections to fixtures which do not conform to these standards.



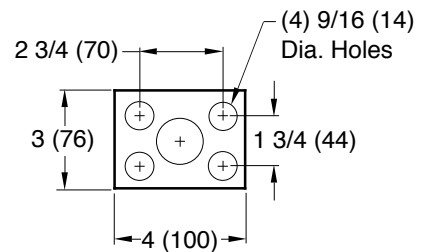
**DETAIL OF COLLAR AND YOKE ASSEMBLY**  
Fig. 0629

3" (75) Outlet Connection



**DETAIL OF COLLAR AND YOKE ASSEMBLY**  
Fig. 0630

4" (100) Outlet Connection



**BASE DETAIL**

FURNISHED WHEN SPECIFIED:

For Extra Heavy Duty Support with 1 1/2" (38) Pipe Uprights, Add Suffix -X to Fig. No.

This Dimension Can be Increased When Fixture Support is to be Installed Behind the Wall (Specify When Required and Wall Thickness.)

DRAWING NUMBER  
S0629

SIZE  
A

SCALE:  
NONE

DATE:  
3-22-84

APPROVED BY:  
TD

CHECKED BY:  
TD

DRAWN BY:  
PJ

FIGURE NUMBER  
**0629, 0630**

REV.	DATE	DESCRIPTION	BY	CKD. BY
D	04/22/09	Added Note	JJ	AM
C	01/11/00	Revised Base Plate	JJ	BS

WEIGHT POUNDS	VOLUME CUBIC FEET

**FIGURE NUMBER**  
**0629, 0630**