

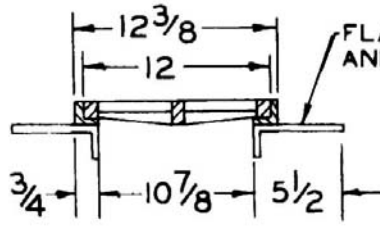
SPECIFICATION:

JOSAM 76400 SERIES COATED CAST IRON 20" x 12" RECTANGULAR LIGHT-DUTY SECTIONAL TRENCH GRATE.

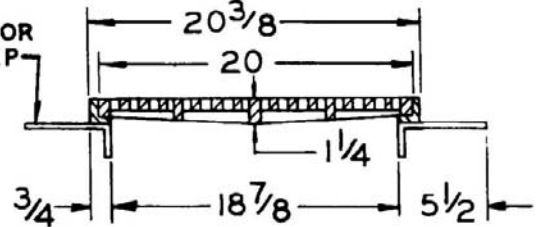
**TRENCH DRAIN
LIGHT-DUTY RECTANGULAR**

SERIES 76400

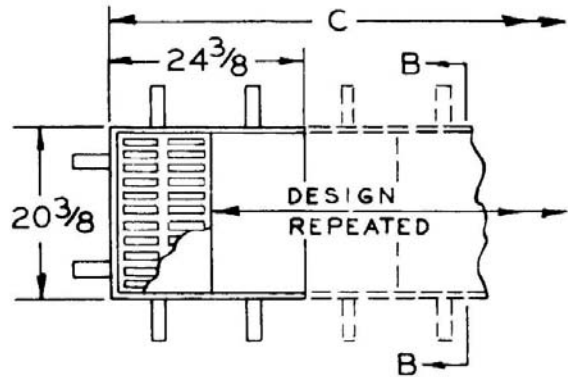
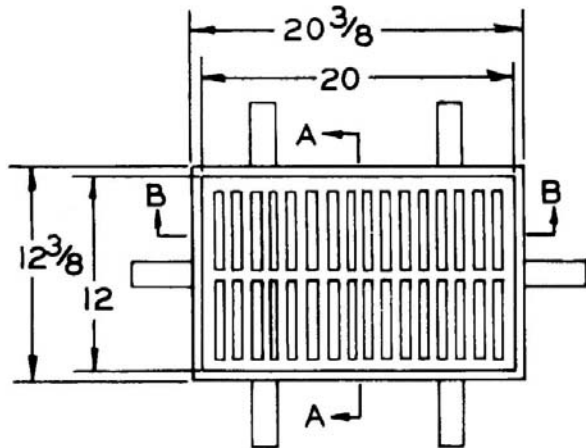
SLOT WIDTH 5" x 1/2" (-1 & -8-2 SLOT WIDTH 3-1/4" x 5/16")



SECTION A-A



SECTION B-B



□ **764** _____

(INDICATE ## OF GRATES)

'C' = (# OF GRATES x 12") + 3/8"
 INSIDE CHANNEL WIDTH = 'C' - 1 1/2"
 GRATE FREE AREA (EACH) 110 SQ IN.
 GRATE ONLY DIM'S = 12" x 20" x 5/8"
 FRAME MADE OF 3/4" x 3/4" x 1/8" ANGLE

- -1 SATIN FINISH NIKALOY GRATE, STAINLESS STEEL FRAME
- -7 DUCTILE IRON GRATE
- -8-2 ALL BRONZE WITH SATIN FINISH TOP
- -VP SECURED GRATE, VANDAL-PROOF SCREWS
- -40 GALVANIZED

DRAWING No. 07/01/08

A-15574-K

JOSAM COMPANY
 MICHIGAN CITY, INDIANA

NOTES: