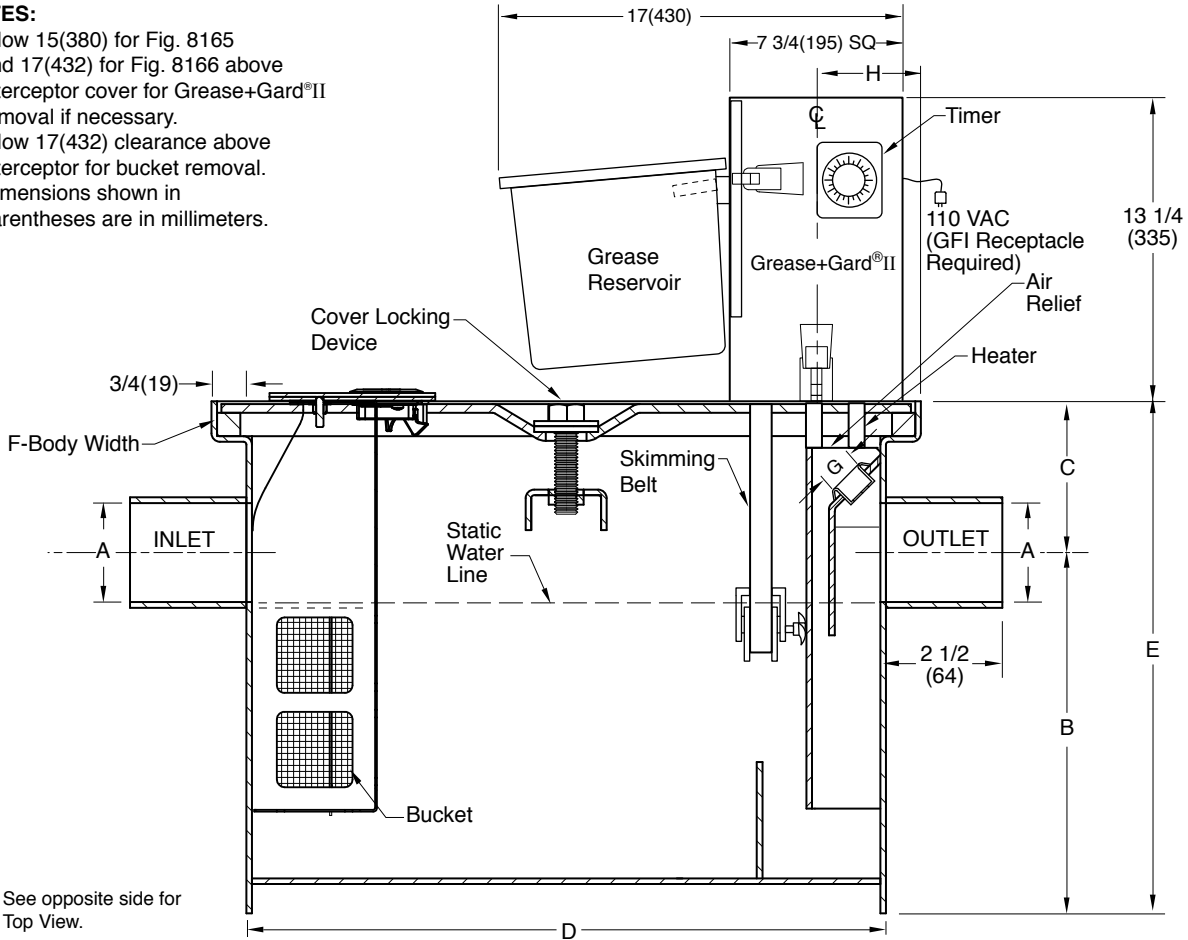


# STAINLESS STEEL GREASE RECOVERY DEVICE (GRD) with GREASE+GARD® II

**FUNCTION:** Used in all areas where fats, oils and grease must be intercepted and collected. The unique fully automatic grease removal design permits removal of accumulated grease without having to remove the cover. Accumulated grease in liquid form is automatically skimmed off and discharged into a reservoir for convenient disposal.

**NOTES:**

1. Allow 15(380) for Fig. 8165 and 17(432) for Fig. 8166 above interceptor cover for Grease+Gard®II removal if necessary.
2. Allow 17(432) clearance above interceptor for bucket removal.
3. Dimensions shown in parentheses are in millimeters.



See opposite side for Top View.

FIG. NO.	GPM FLOW RATE (L/M)	GREASE CAP LBS (KG)	A	B	C	D	E	F (WIDTH)	G (Plug Size)	H
8165-20	20(75)	40(15)	03(75)	12 1/2(318)	4(100)	19 1/2(495)	16 1/2(419)	21(535)	1 1/2(38)	4 3/8(111)
8165-25	25(95)	50(19)	03(75)	14(356)	4 1/8(105)	21 1/8(538)	18(457)	22 1/2(572)	1 1/2(38)	4 3/8(111)
8165-35	35(132)	70(26)	03(75)	14 1/4(360)	4 1/2(115)	22 1/2(570)	18 3/4(476)	24(610)	1 1/2(38)	4 3/8(111)
8165-50	50(189)	100(37)	03(75)	14 1/4(360)	5 1/4(135)	31 3/4(805)	19 1/2(495)	24(610)	1 1/2(38)	16 5/8(422)
LOW TYPE INTERCEPTOR										
8166-20	20(75)	40(15)	03(75)	6 3/4(171)	3 1/2(89)	39 1/2(1005)	10 1/4(260)	21 3/4(552)	1 1/2(38)	20 1/2(521)
8166-35	35(132)	70(26)	03(75)	6 3/4(171)	4 3/4(120)	52 1/4(1325)	11 1/2(292)	27 1/2(699)	1 1/2(38)	26 3/4(679)
8166-50	50(189)	100(37)	03(75)	9 3/4(248)	6(150)	50 1/4(1275)	15 3/4(400)	27 1/2(699)	1 1/2(38)	25 3/4(654)

**REGULARLY FURNISHED:**  
 Automatic Grease Recovery Device (GRD) with Type 304 Stainless Steel Interceptor, with Bucket, No-Hub Connections, Flow Control Fitting and Grease+Gard®II Skimmer with Heater and Grease Reservoir.

**VARIATIONS:**  
 T Threaded Inlet/Outlet  
 Extension -E [12(305) maximum height available]

**OPTIONAL MATERIALS:**  
 Duco Coated Steel -A505

DRAWING NUMBER  
8165-8166

SIZE  
A

SCALE:  
NONE

DATE:  
12-6-12

APPROVED BY:  
CL

CHECKED BY:  
CL

DRAWN BY:  
TBW

8165-8166

FIGURE NUMBER

DIMENSIONS ARE SUBJECT TO MANUFACTURERS TOLERANCE AND CHANGE WITHOUT NOTICE

REV.	DATE	DESCRIPTION	BY	CKD. BY	WEIGHT POUNDS	VOLUME CUBIC FEET	FIGURE NUMBER <b>8165-8166 SERIES</b>
------	------	-------------	----	---------	---------------	-------------------	--

# STAINLESS STEEL GREASE RECOVERY DEVICE (GRD) with GREASE+GARD® II

DRAWING NUMBER  
**S8165-8166BS**

SIZE  
**A**

SCALE:  
**NONE**

DATE:  
**12-6-12**

APPROVED BY:  
**CL**

CHECKED BY:  
**CL**

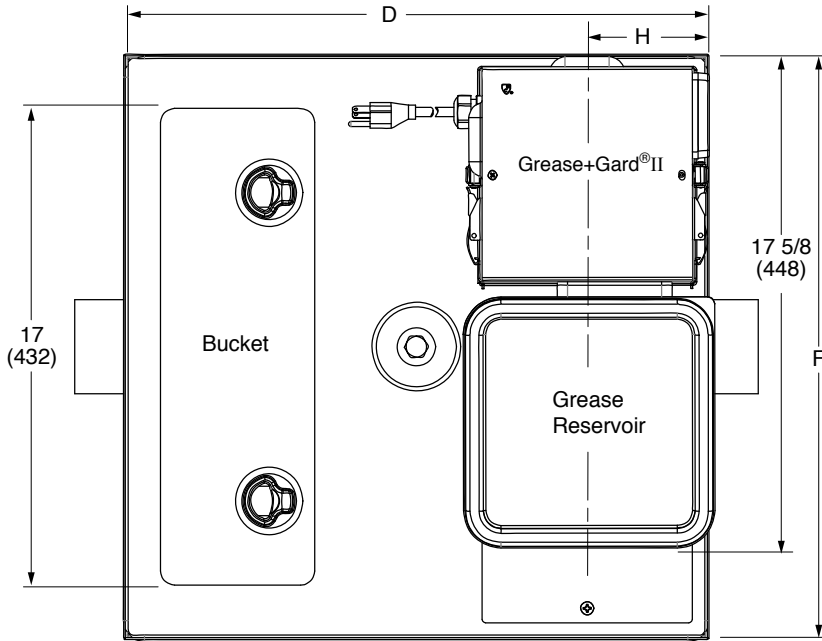
DRAWN BY:  
**TBW**

**8165-8166**

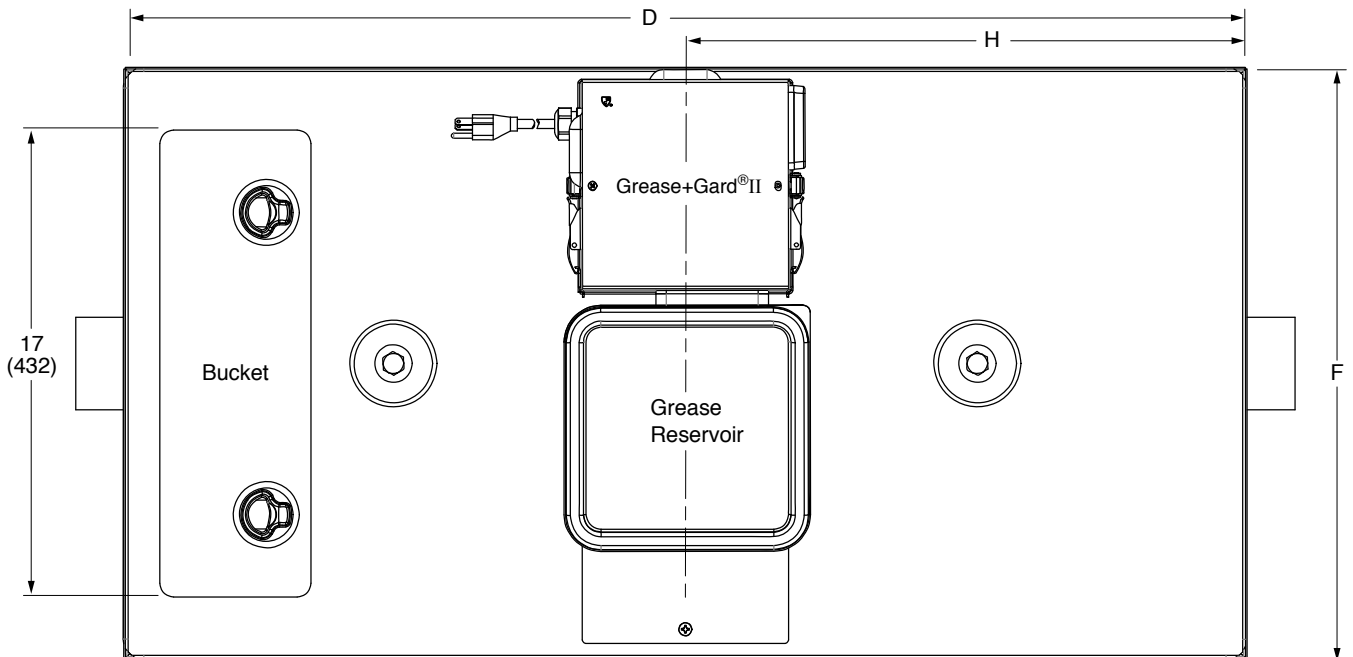
FIGURE NUMBER

WE CAN ASSUME NO RESPONSIBILITY FOR USE OF SUPERSEDED OR VOID DATA

DIMENSIONS ARE SUBJECT TO MANUFACTURERS TOLERANCE AND CHANGE WITHOUT NOTICE



**8165 SERIES TOP VIEW**



**8166 SERIES TOP VIEW**

FIG. NO.	GPM FLOW RATE (L/M)	GREASE CAP LBS (KG)	D	F	H
8165-20	20(75)	40(15)	21(535)	21(535)	4 3/8(111)
8165-25	25(95)	50(19)	22 5/8(575)	22 1/2(572)	4 3/8(111)
8165-35	35(132)	70(26)	24 (610)	24 (610)	4 3/8(111)
8165-50	50(189)	100(37)	33 1/4(845)	24(610)	16 5/8(422)
LOW TYPE INTERCEPTOR					
8166-20	20(75)	40(15)	41(1040)	21 3/4(552)	20 1/2(520)
8166-35	35(132)	70(26)	53 3/4(1365)	27 1/2(699)	26 3/4(679)
8166-50	50(189)	100(37)	51 3/4(1315)	27 1/2(699)	25 3/4(654)

**NOTE:** Dimensions shown in parentheses are in millimeters.

REV.	DATE	DESCRIPTION	BY	CKD. BY

WEIGHT POUNDS	VOLUME CUBIC FEET

**FIGURE NUMBER**  
**8165-8166**  
**SERIES**